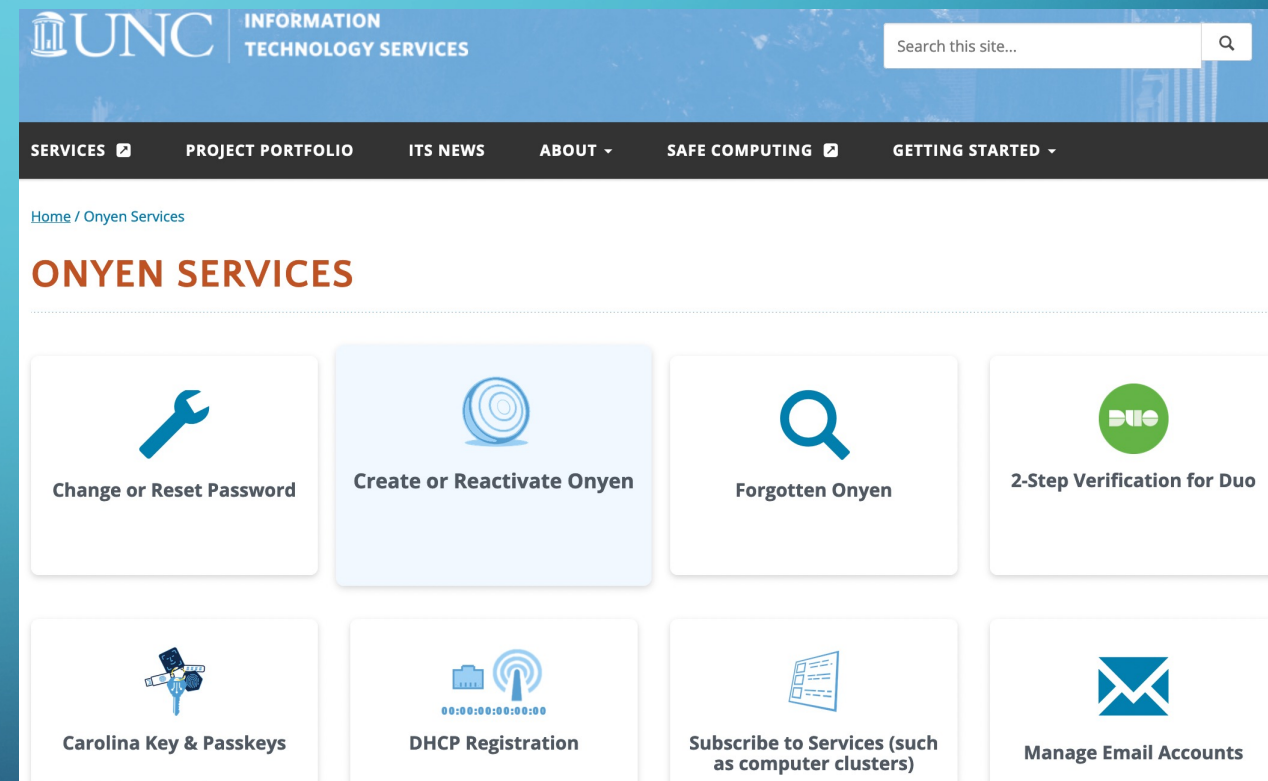


A decorative graphic on the left side of the slide consists of a network of light blue lines and small circles, resembling a circuit board or a neural network, extending from the top and bottom edges towards the center.

CONNECTING TO CAMPUS RESOURCES

1 SET UP YOUR ONYEN

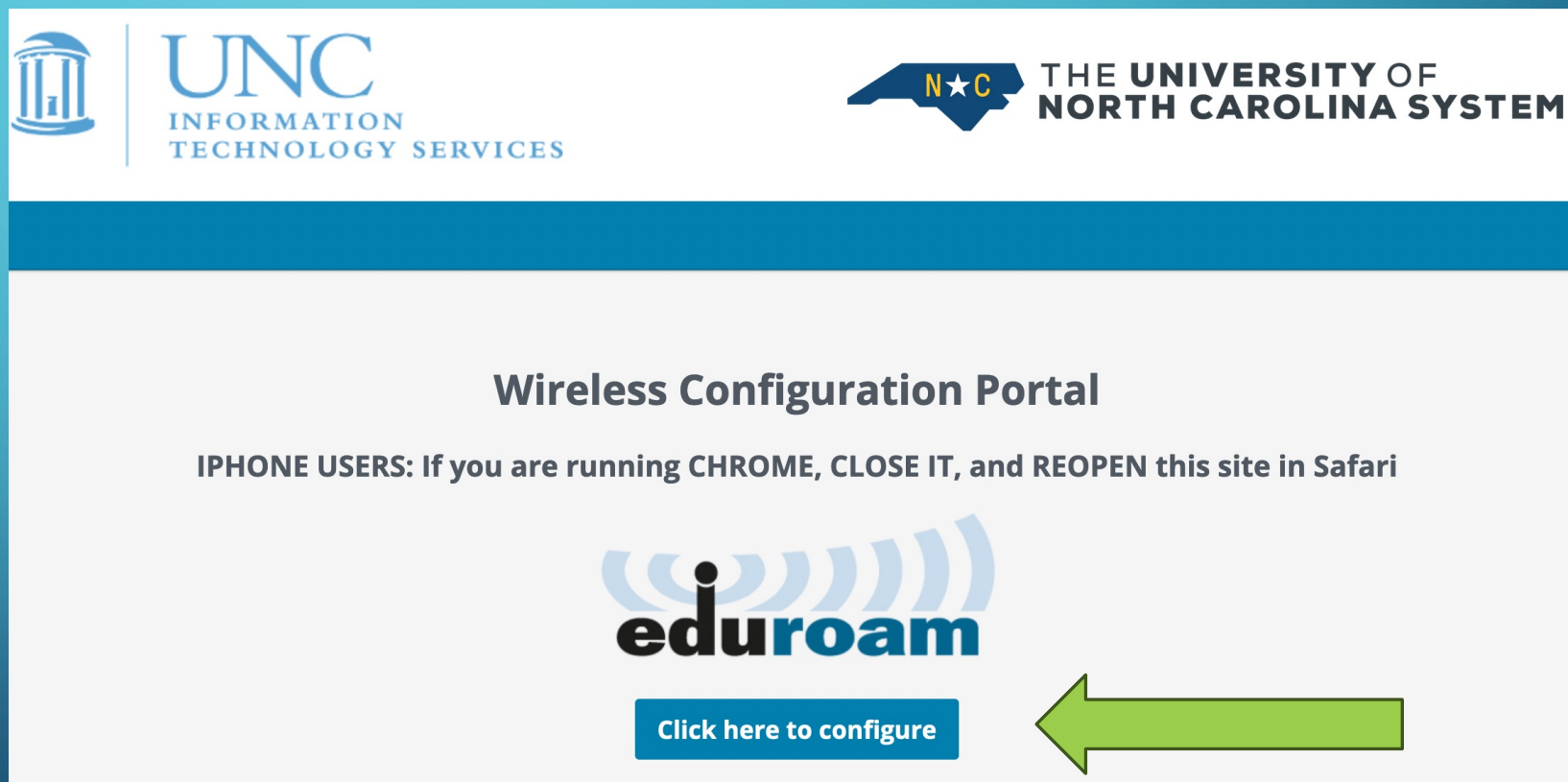
- the “only name you’ll ever need”
- your campus login for just about everything
- <http://onyen.unc.edu>
- Manage your password as well as some common “identity” related resources
 - Access “identity” related resources like Duo and Office365
 - 2-Step verifications and DHCP registrations



2

CONNECT TO CAMPUS WIRELESS NETWORK (EDUROAM)

- Connect to “UNC-Setup” network
- Go to <http://wifi.unc.edu> and follow prompts



The screenshot shows the UNC Information Technology Services website. At the top, there are logos for UNC Information Technology Services and The University of North Carolina System. Below the logos is a blue horizontal bar. The main content area is white and features the title "Wireless Configuration Portal". Below the title is a note for iPhone users: "IPHONE USERS: If you are running CHROME, CLOSE IT, and REOPEN this site in Safari". In the center is the eduroam logo, which consists of a stylized 'i' with signal waves above it and the word 'eduroam' in blue. Below the logo is a blue button with the text "Click here to configure". A large green arrow points from the right side of the button towards the left.

UNC INFORMATION TECHNOLOGY SERVICES

THE UNIVERSITY OF NORTH CAROLINA SYSTEM

Wireless Configuration Portal

IPHONE USERS: If you are running CHROME, CLOSE IT, and REOPEN this site in Safari

eduroam

Click here to configure

CAMPUS NETWORK RECOMMENDATIONS

- We recommend these networks in order of priority. It's good to have a backup network
 1. Eduroam
 2. 23-24-UNC-PSK
 3. UNC-Guest
- We recommend connecting to the UNC PSK network as a secondary option to Edu Roam network. If that doesn't work, then try UNC-Guest.
- See this UNC IT help [article](#) for step by step instructions on connecting to Eduroam and PSK.

3

INSTALL VIRTUAL LAB ON YOUR COMPUTER (CITRIX WORKSPACE SOFTWARE)

The virtual lab..

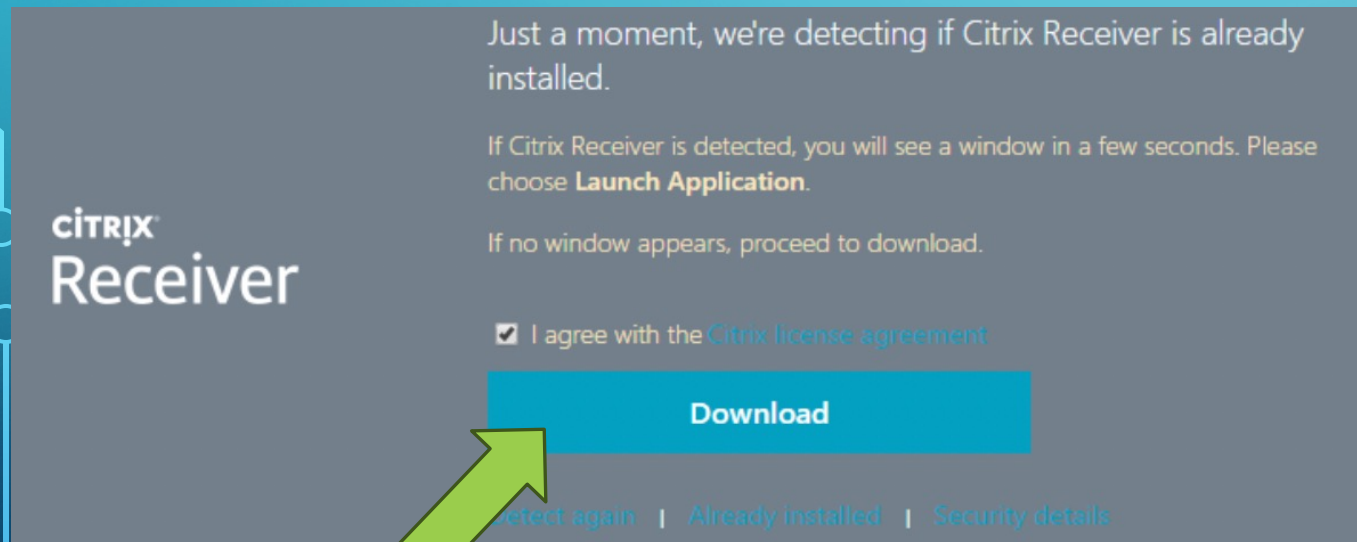
- Provides on-demand access to a wide variety of applications for anyone with a valid ONYEN
- Virtualized applications are delivered instantly to users via any computer or mobile device connected to a network at any location on or off campus.
- Available 24/7

3a INSTALL VIRTUAL LAB ON YOUR COMPUTER (CITRIX WORKSPACE SOFTWARE) - WINDOWS

- In your browser, navigate to **Virtual Lab** (<https://virtuallab.unc.edu/>)
- Log in with your Onyen and password. Authenticate through Duo 2-Step authentication.
- On the security message that displays, click Accept.
 - If this is the first time you have used Virtual Lab and you do not have the Citrix Workspace installed, you see a window titled, "Welcome to Citrix Receiver."
- Click Detect Receiver.
 - The installation program checks to see if the Workspace app is on your computer.
 - If it has been installed, the installation program displays a window that lets you launch Virtual Labs, and you can skip the rest of these steps.
 - If it is not installed, you see an option to download it.

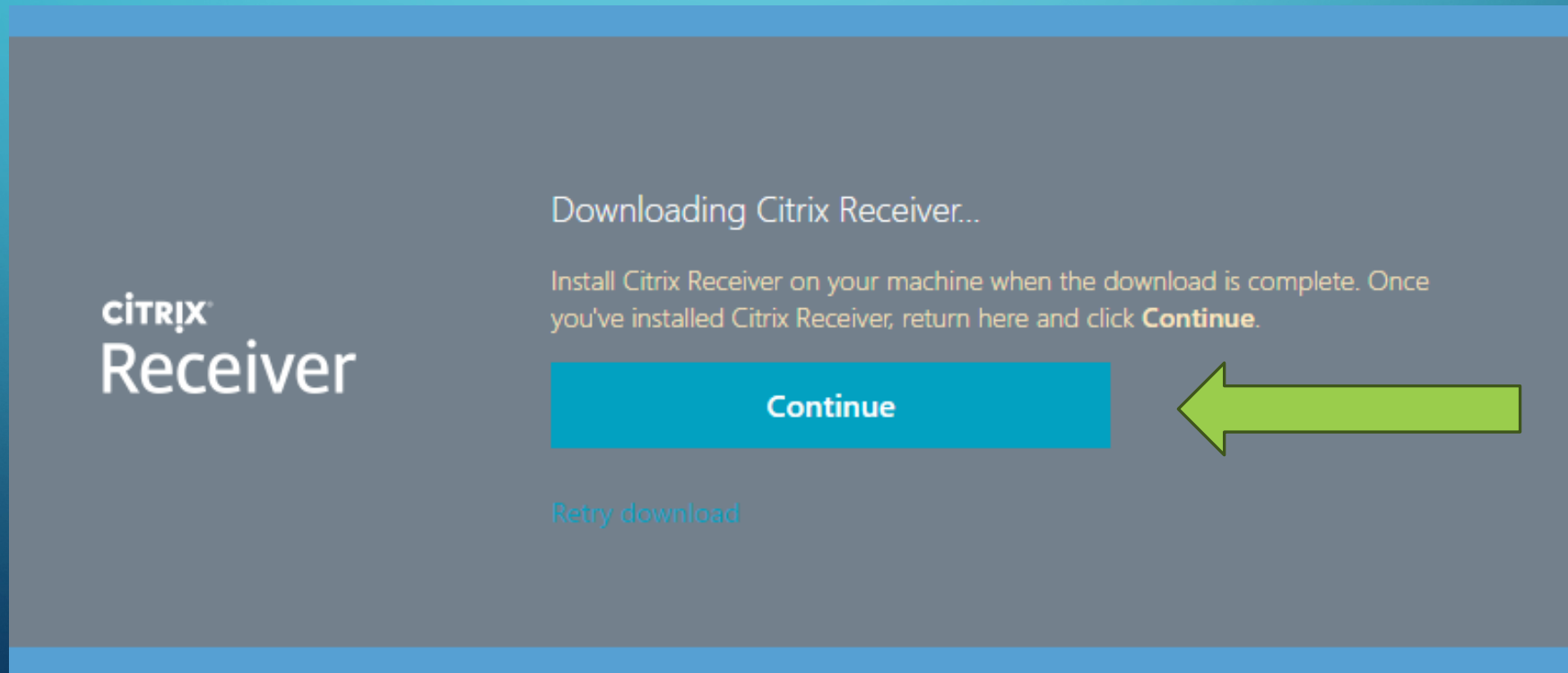
3a INSTALL VIRTUAL LAB ON YOUR COMPUTER (CITRIX WORKSPACE SOFTWARE) - WINDOWS

- Check the box to agree to the Citrix license agreement and click **Download**.
- When the download completes, open the downloaded installer and click through the prompts.



3a INSTALL VIRTUAL LAB ON YOUR COMPUTER (CITRIX WORKSPACE SOFTWARE) - WINDOWS

- When you finish installing, go back to the browser and click **Continue** to confirm that the Citrix Workspace installation is complete. The installation program takes you to the Virtual Lab home screen.



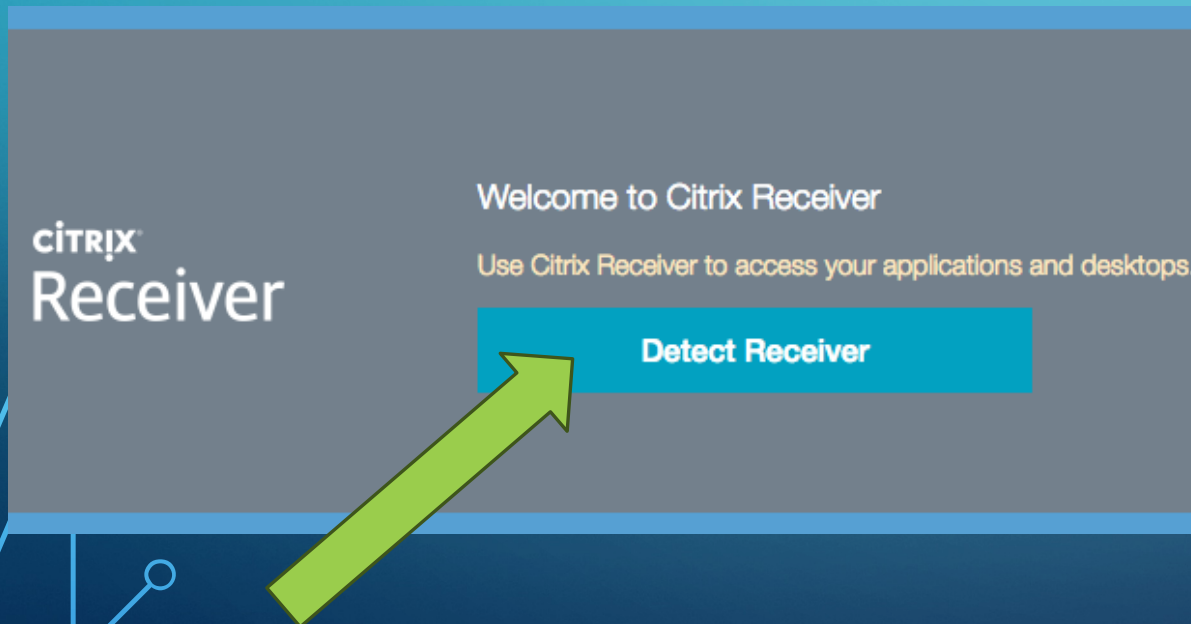
3b INSTALL VIRTUAL LAB ON YOUR COMPUTER (CITRIX WORKSPACE SOFTWARE) - MAC

- In your browser, navigate to **Virtual Lab** (<https://virtuallab.unc.edu/>)
 - Follow the instructions displayed on your screen that are specific to the browser you are running. The instructions below are for installing the plug-in.
- Log in with your Onyen and password. Authenticate through **Duo** 2-Step authentication.
- On the security message that displays, click Accept.
 - The installation program verifies which version of Citrix Workspace you have.
 - If you have the most current version of the Citrix Workspace, you are directed to the Virtual Lab Logon box. Skip the rest of these steps.
 - If you don't have the latest version of Citrix Workspace, the installation program displays a "Welcome to Citrix Receiver" page.



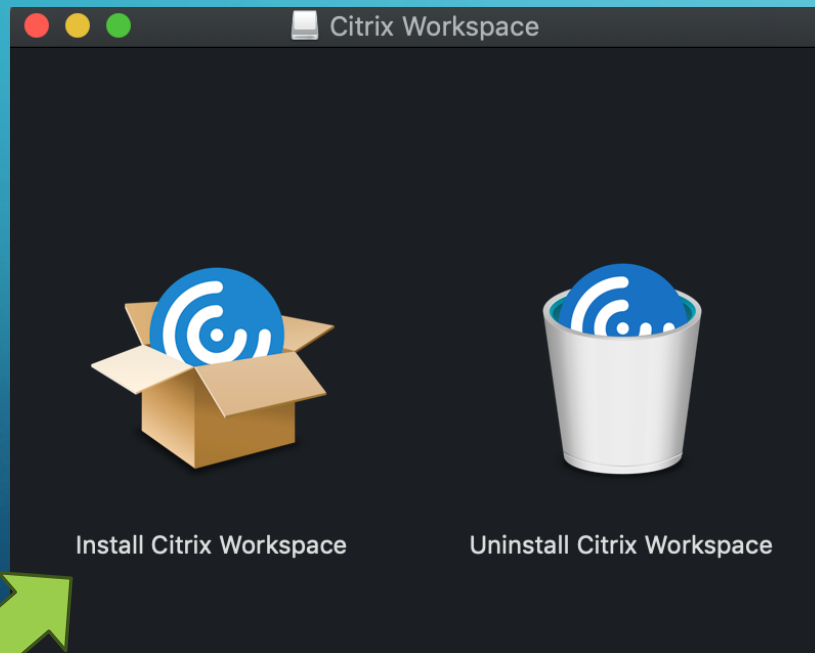
3b INSTALL VIRTUAL LAB ON YOUR COMPUTER (CITRIX WORKSPACE SOFTWARE) - MAC

- Click “Detect Receiver” (If you don't have Receiver on your computer, the installation program shows a message asking you to download it.)
- Click the checkbox to agree with the Citrix license agreement and then click “Download” to download the software:

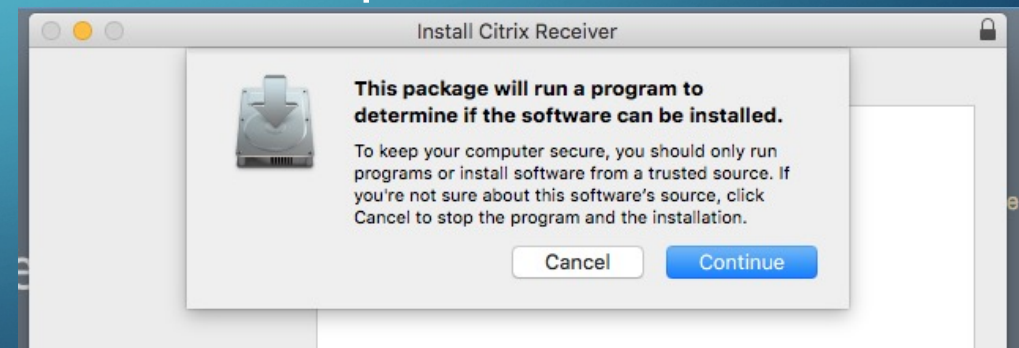


3b INSTALL VIRTUAL LAB ON YOUR COMPUTER (CITRIX WORKSPACE SOFTWARE) - MAC

- Once the Workspace app is downloaded, click "Install Citrix Workspace"



- Click through the messages to complete installation. If you're asked to create an account:
 - Use this address for the account info: virtuallab.unc.edu
 - Use your Onyen and password for the user ID and password.



- Once the software is downloaded, you can go to the website and launch applications.

4

RUN STATA (OR ANY AVAILABLE PROGRAM)

The screenshot shows the ITS TL SYSTEMS Apps interface. The top navigation bar includes 'HOME' and 'APPS' tabs. The 'Apps' section displays a grid of application tiles. A green arrow points to the 'StataSE 18' tile, which is highlighted with a dark border. Below the grid, a modal window for 'StataSE 18' is open, showing 'Actions' (Open, Add To Favorites) and a 'Description' field.

ITS TL SYSTEMS

HOME APPS

Apps

All (43) Favorites (2) Categories Collections

Client 263

R x64 431_test

RStudio

SAS 94 English

SAS Enterprise Guide 83 32bit

SPSS Statistics 28

Stata - Installing ADOs on Virtu...ink

StataSE 18

StataSE 18 Other

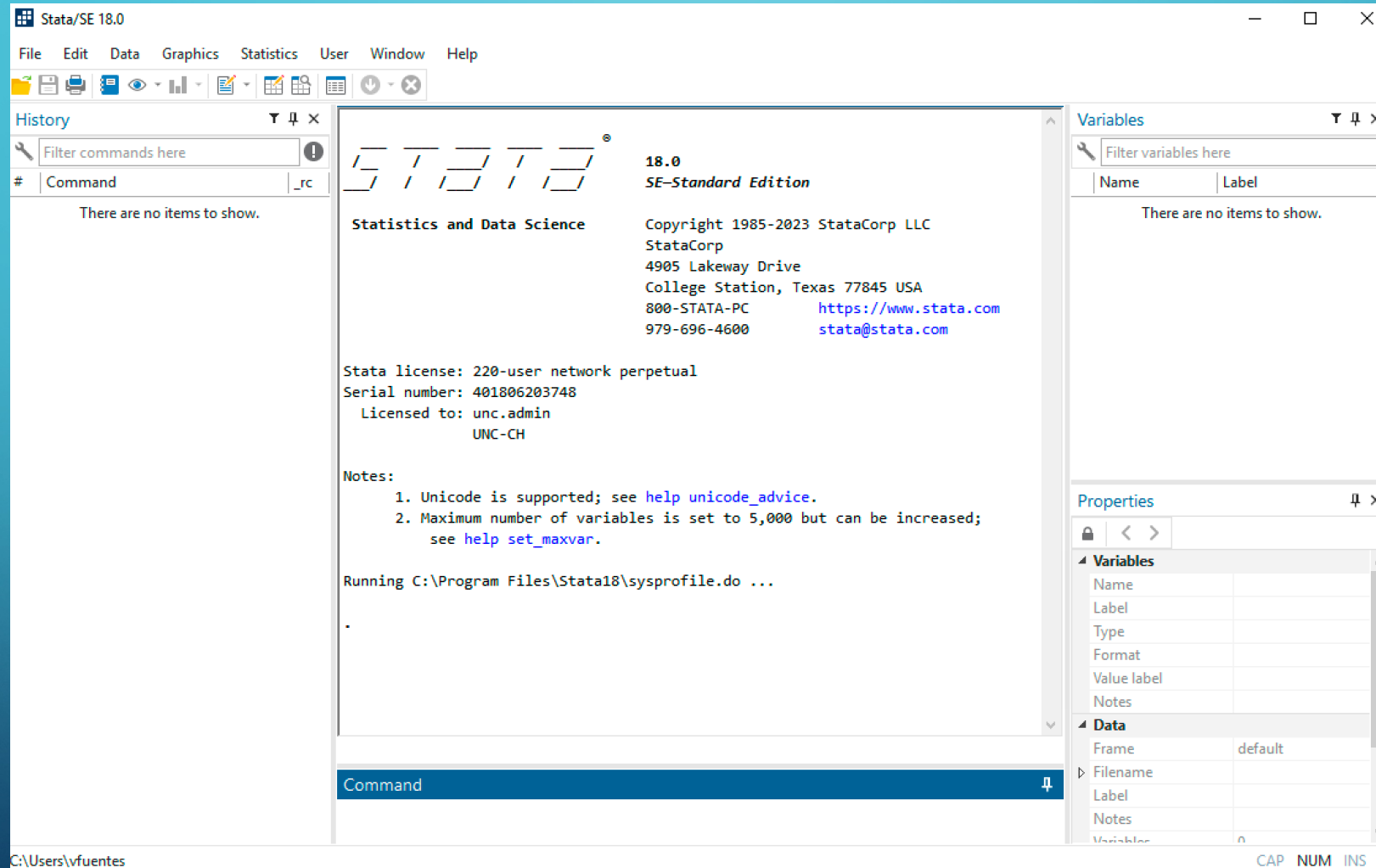
Actions:

- ☒ Open
- ☐ Add To Favorites

Description:

4

RUN STATA (OR ANY AVAILABLE PROGRAM)



OTHER USEFUL RESOURCES

[Virtual Lab: Frequently Asked Questions](#)

[How do I troubleshoot Virtual Lab?](#)

[Virtual Lab](#)

[Virtual Lab: Saving Your Files](#)

[Virtual Lab: Installing the Citrix Workspace App on Microsoft Windows](#)

[Setup Kumo to connect to OneDrive on Virtual Lab](#)

[Virtual Lab: Installing on an Android Device](#)

[Virtual Lab and Stata User-contributed ADO files](#)

[Virtual Lab: Installing or Upgrading on a Mac](#)

[Atlasti on Virtual Lab](#)

[Virtual Lab: Installing or Upgrading on an iOS Device \(iPhone, iPad\)](#)

[File Access Preferences on Citrix for Mac](#)

[File Access Preferences for Citrix in Windows](#)

Source:

https://help.unc.edu/sp?sys_kb_id=73dc90badbaf241070551ffa689619d3&id=kb_article_view&sysparm_rank=3&sysparm_tsqueryId=b50a883bdb6fe01070551ffa68961952