

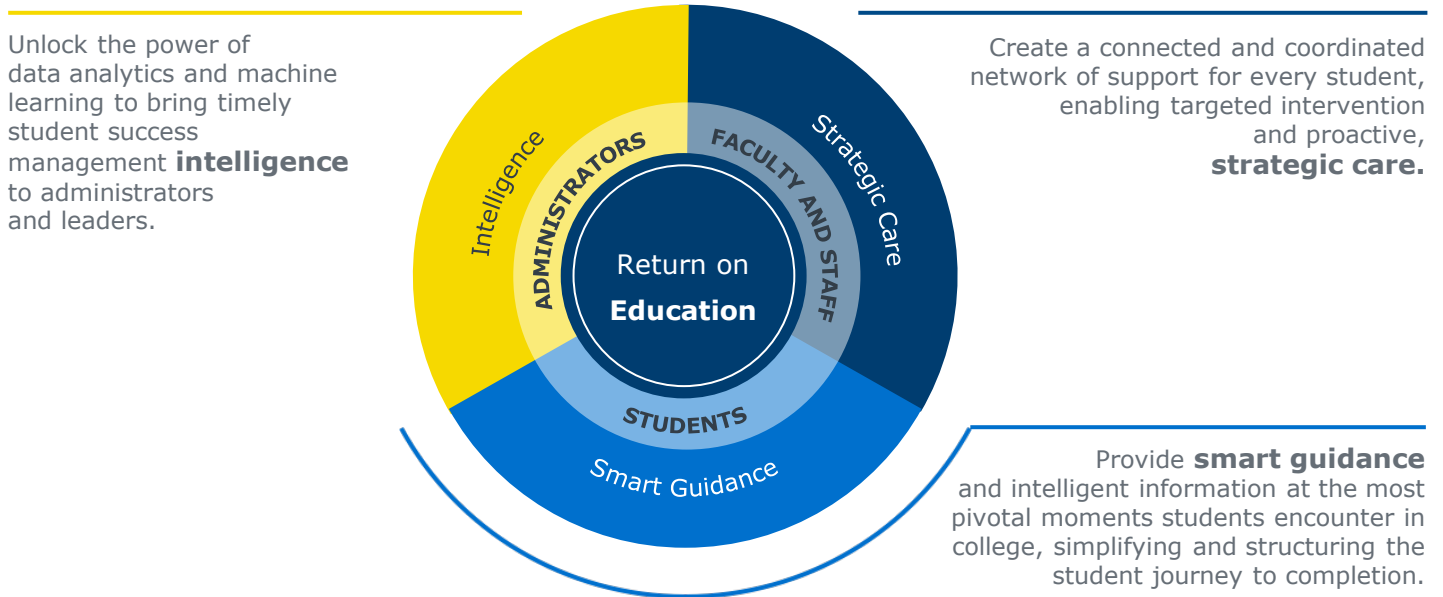
Introducing Navigate

Introducing EAB's Student Success Management System (SSMS)

Our **Student Success Management System** is an **enterprise-level technology** that links administrators, advisors, deans, faculty, other staff, and students in a coordinated care network designed to help schools **proactively manage student success** and deliver a **Return on Education**.

How It Works

EAB Analytics Use Machine Learning to Turn Historical Patterns into Current Insights



Intelligence
For Administrators

Unlocking the power of SSC's data analytics

Institutions at advanced levels of SSM Intelligence consistently collect historical data from across the institution. Members use data to drive day-to-day activity and inform intervention strategy, and review data to track progress and make improvements.



Strategic Care
for Faculty and Staff

Creating a connected and coordinated support network for all students

Institutions at advanced levels of SSM Strategic Care strategically use Navigate to provide holistic care to all students. Members rely on cases, alerts, and campaigns to serve all students and to ensure seamless coordination between all student support offices.



Smart Guidance*
for Students

Providing curated guidance at the most pivotal moments in each student's journey

Institutions at advanced levels of SSM Smart Guidance empower students to succeed through customized, student-friendly guidance in-real time and automatically notify them when they make a misstep to help them stay on the right path.

*Optional note if the school does not have Smart Guidance