



Fall 2022 Faculty and Staff Meeting

Remarks by Nancy Messonnier, MD, Dean and Bryson Distinguished Professor

October 18, 2022



GILLINGS SCHOOL OF
GLOBAL PUBLIC HEALTH



Initial priorities

- Public health practice
- Inclusive excellence
- Global health

Introducing new leaders



Kim Ramsey-White, PhD

Associate Dean for
Inclusive Excellence



John Wiesman, DrPH, MPH

Associate Dean for Practice





Is the pandemic over?

COVID-19: Cases and Deaths

as of October 17, 2022

KFF

Overview

Trends

Data Table

Notes & Sources

Cumulative Cases
625,227,834



04/01/22 06/01/22 08/01/22 10/01/22

7-Day Rolling Average
534,401



04/01/22 06/01/22 08/01/22 10/01/22

Cumulative Deaths
6,569,189



04/01/22 06/01/22 08/01/22 10/01/22

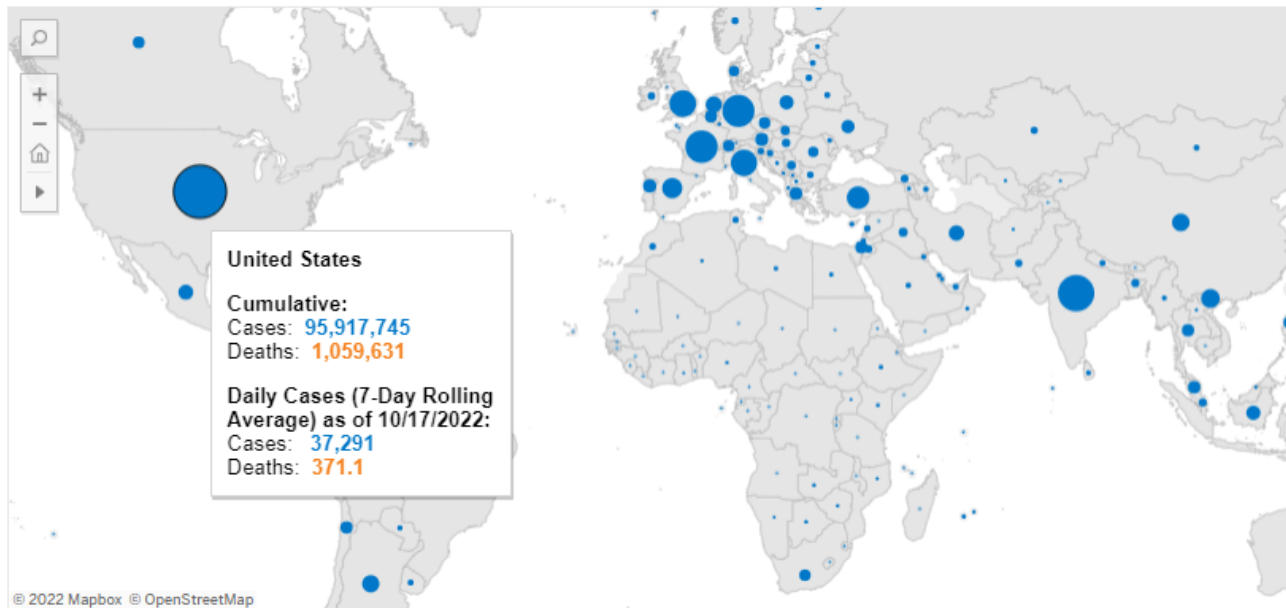
7-Day Rolling Average
1,706



04/01/22 06/01/22 08/01/22 10/01/22

Select Metric: Cumulative Cases

Selected Country: All



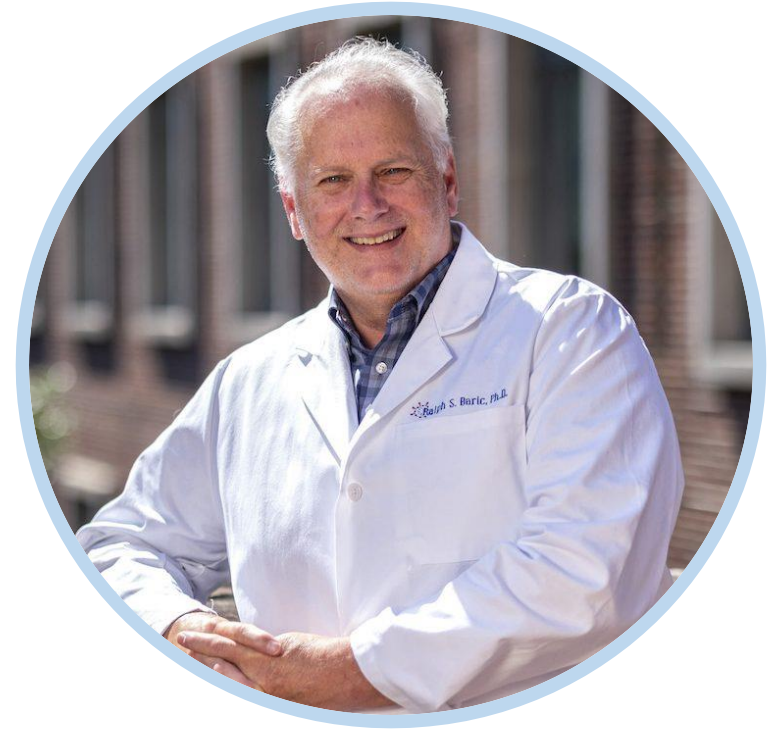
© 2022 Mapbox © OpenStreetMap

Continued UNC work on pandemic control and prevention

- Vaccine evaluation
- Addressing mis- and disinformation
- Community engagement
- Developing antivirals to combat future pathogens with pandemic potential: AVIDD and READDI

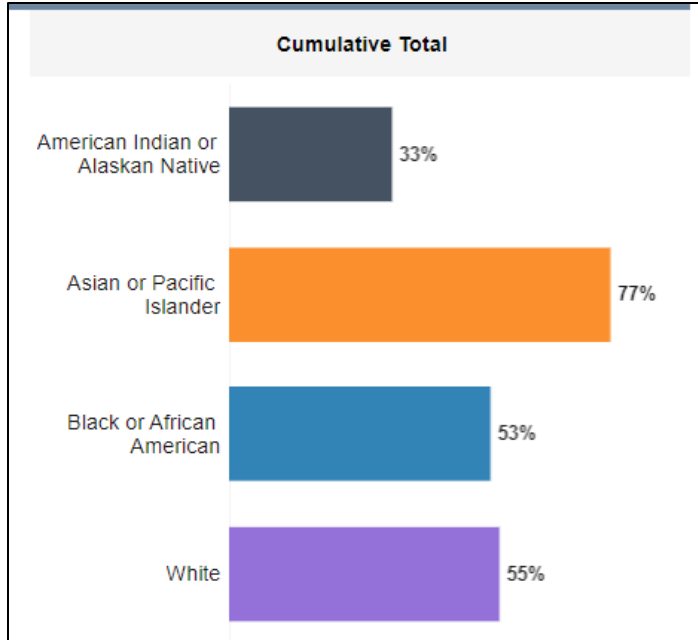
AViDD and READDI

“Our NIH sponsored READDI-AViDD Center is an international consortium that includes academic institutions, pharmaceutical companies and affiliated entities across five nations who work together to prevent life-threatening human coronavirus, flavivirus, alphavirus and filovirus infections.”

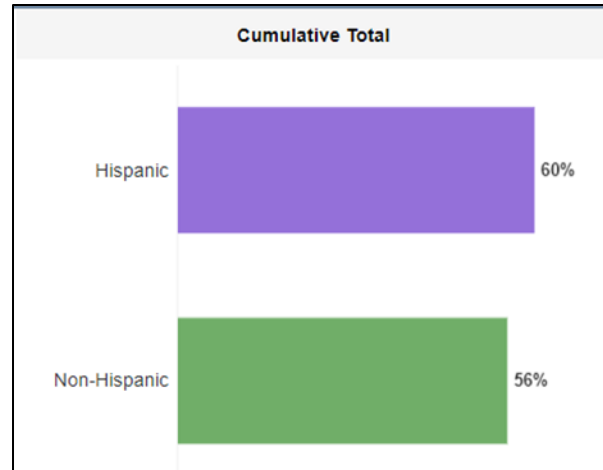


-- **Ralph Baric, PhD**, program director and William R. Kenan, Jr. Distinguished Professor in epidemiology, microbiology and immunology.

NC has been successful in decreasing race and ethnicity disparities in COVID vaccination coverage



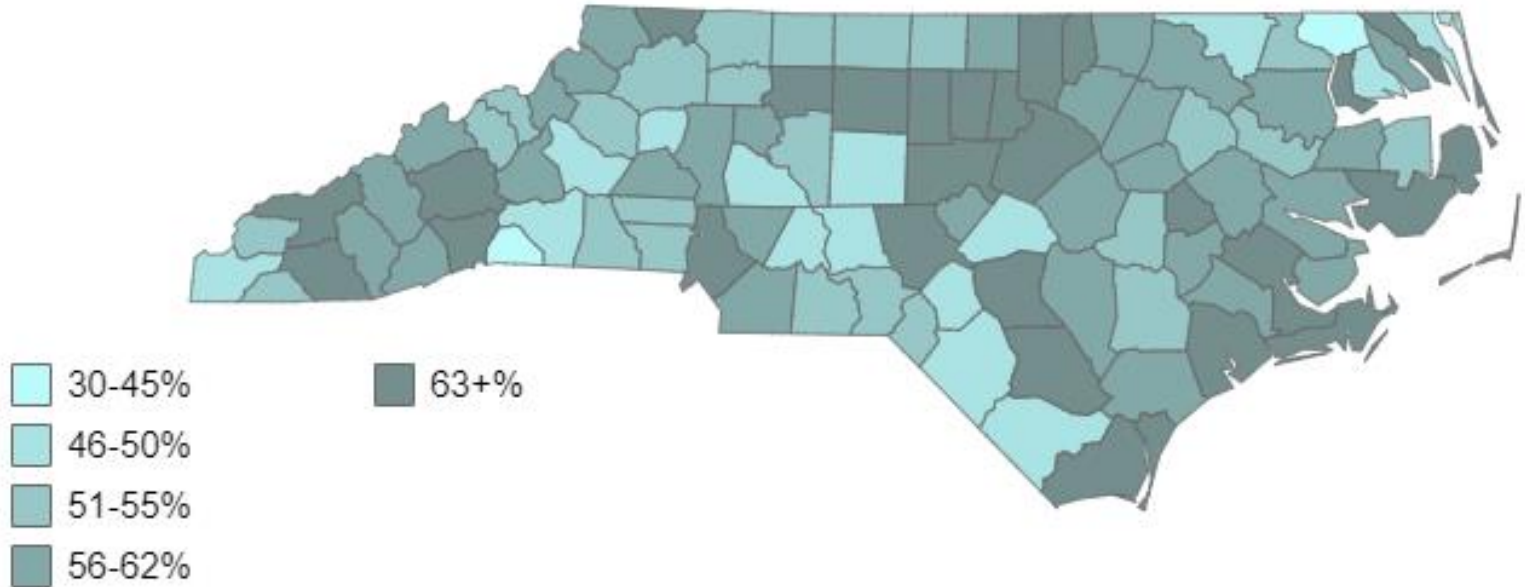
Latinx populations have higher vaccine rates than non-Latinx



NC Percent of Population Vaccinated with at Least One Dose by Race and Ethnicity, cumulative total (12/14/2020 – 10/12/2022)

<https://covid19.ncdhhs.gov/dashboard/vaccinations>

COVID vaccination* coverage in NC varies by county



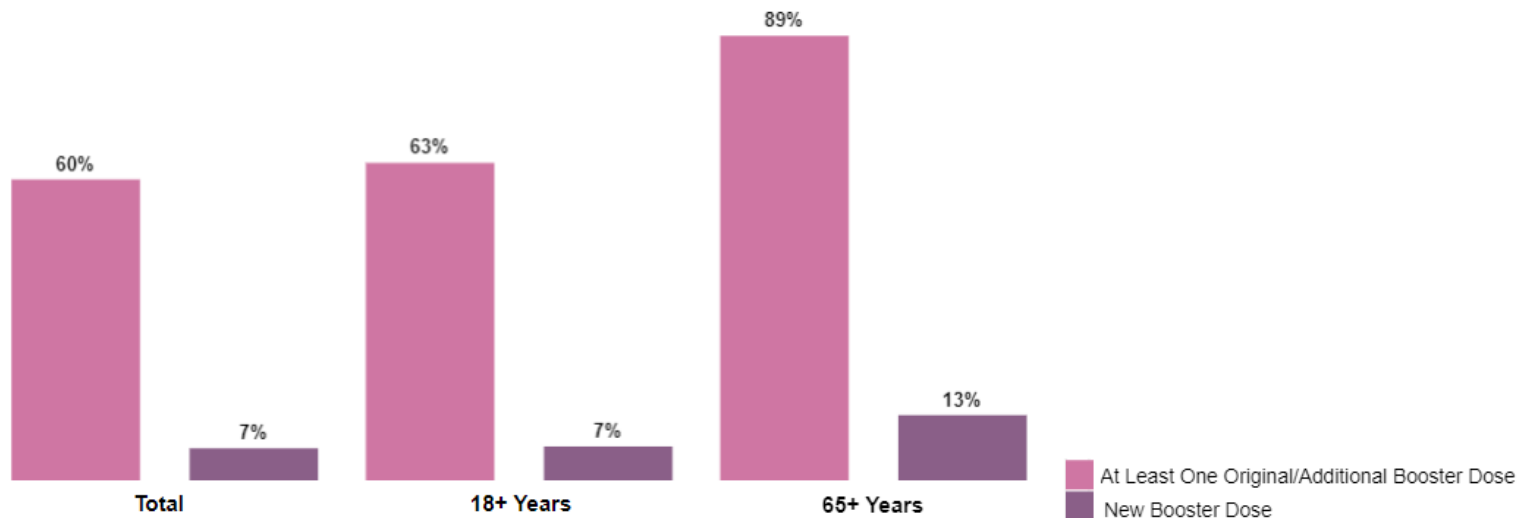
*percent of population with at least one dose

. Data: December 14, 2020 – October 12, 2022 at 4:00 a.m.

Vaccinations Data will be updated every Wednesday

<https://covid19.ncdhhs.gov/dashboard/vaccinations>

Percent of vaccinated population with booster dose (North Carolina)



"Percent of Vaccinated Population with at Least One Original Booster/Additional Dose" is the percentage of people with an initial series complete who have received another dose of a COVID-19 vaccine, or any dose that has been indicated as an original additional or booster dose by the person's health care provider, since August 13, 2021. This includes people who received booster doses and people who received original additional doses. "Percent of Vaccinated Population with at Least One New Booster Dose" is the percentage of people with an initial series complete who have received a dose of the new bivalent booster.

. Data: December 14, 2020 – October 12, 2022 at 4:00 a.m.
Vaccinations Data will be updated every Wednesday

<https://covid19.ncdhhs.gov/dashboard/vaccinations>



**Don't let
the flu bug you!
Get a flu shot.**

Find a campus flu clinic at
flu.unc.edu

**At Gillings:
Fri., 10/28, MHRC Lower Level**

Get a COVID booster + Flu shot this year



Talking about preparedness



TAR HEEL.
ZOMBIE
PREPAREDNESS FESTIVAL

JOIN US
September 22
11am-2pm
The Pit

IF YOU'RE READY FOR ZOMBIES, YOU'RE READY FOR ANY EMERGENCY.

go.unc.edu/zombie

**CAROLINA READY**
Be Informed. Be Prepared. Take Action.

Hosted by Campus Safety.
UNC Police • Environment, Health and Safety • Emergency Management and Planning



A few COVID lessons learned

- Public health interventions only effective if implementable (and ready *before* they're needed)
 - Long-term community engagement crucial, across all of NC
 - Vaccination data reflects some success in protecting NC communities that have experienced systemic racism
- Investments in diagnostics, treatments, vaccines pay off
- Policies matter
- Sustainable funding matters



GILLINGS SCHOOL OF
GLOBAL PUBLIC HEALTH

A photograph of a university campus in autumn. In the foreground, several bicycles are parked in a rack. The ground is covered with fallen yellow and orange leaves. In the background, there are trees with vibrant autumn foliage and a brick building. A white plastic bag is visible on the right side of the bicycle rack.

Moving ahead at Gillings

Opportunities to build on our strengths, increase diversity, attract new talent

- Committed to increasing faculty diversity
- Funding to hire a “cluster” of three new faculty members across Gillings, specifically from historically marginalized racial/ethnic groups
- HPM and NUTR chair searches under way
- Improving the lived experiences of all faculty, staff and students

“State-of-the-School”
data to come in
November impact
report and early
spring faculty and
staff meeting



Hooray for being together again in person. . .safely



Gloria Thompson, building environmental technician, at water bottle filling station



Welcome fall with the Gillings School community — costumes optional!

Apples and Pumpkins, Oh My!

TUESDAY, NOV. 1 • 2-3:30 P.M. • ARMFIELD ATRIUM

Jack-o-lantern contest: Bring a carved pumpkin (or one to carve during the event) or send in a photo — register with gmarie@email.unc.edu by Oct. 21 to compete!

Everyone is welcome (no registration required) for:
Snacks from Vimala's Curryblossom Café
A free raffle for bushels of N.C. apples



Accolades

Faculty Award for Global Excellence
in recognition of contributions to
advance global partnerships,
education and research at UNC

Aaron Salzberg, PhD

Director of The Water Institute and
Don and Jennifer Holzworth
Distinguished Professor of
Environmental Sciences and
Engineering

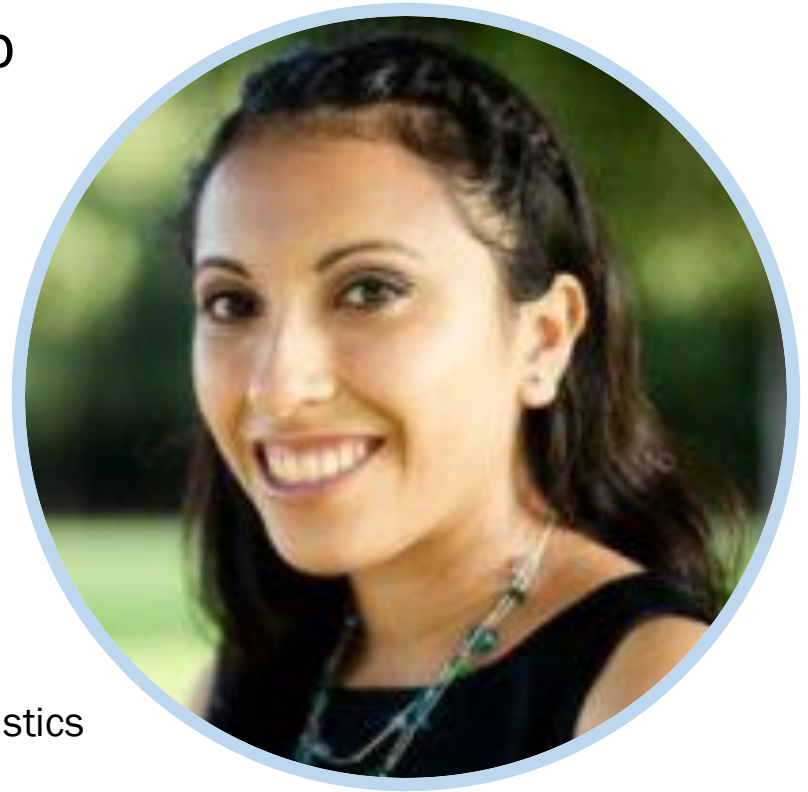


Gillings Faculty Award for Excellence
in Health Equity Research that
advances solutions to health
inequities



Chantel Martin, PhD
Assistant Professor, Epidemiology

2022 Carolina Women's Leadership
Council Faculty Mentoring Award:
faculty-to-graduate student
mentoring category



Tanya Garcia, PhD,
Associate Professor, Biostatistics

Top schoolwide awards for mentorship, teaching, research, public health practice, and service



Daniel Westreich, PhD
professor of epidemiology:
**McGavran Award for
Excellence in Teaching**



Andrew Olshan, PhD
Barbara S. Hulka Distinguished
Professor of epidemiology and
interim associate dean for
research: **Larsh Award for
Mentorship**



Clare Barrington, PhD
associate professor of
health behavior:
**Greenberg Award for
teaching, research and
service**

Dilshad Jaff, MD, MPH
Gillings Humanitarian Fellow:
**Barr Alumni Award for
outstanding achievements
and contributions to public
health**



Fourth consecutive annual HEED Award



Health Professions Higher Education Excellence in Diversity (HEED) Award for outstanding commitment and ongoing promotion of inclusive excellence

Three honored with prestigious awards at University Day



Nicole Bates, MPH, DrPH
University Distinguished
Alumna



F. DuBois Bowman, PhD
University Distinguished
Alumnus



Charletta Sims Evans, MEd
Rebecca Clark Staff Award
for Moral Courage

University Day recognition for Gillings faculty member and student



Orlando Coronell, PhD
Associate Professor, ESE



Margot Midkiff
BSPH senior, HPM



GILLINGS SCHOOL
of GLOBAL
PUBLIC HEALTH

THE UNIVERSITY
of NORTH CAROLINA

Thank You



GILLINGS SCHOOL OF
GLOBAL PUBLIC HEALTH