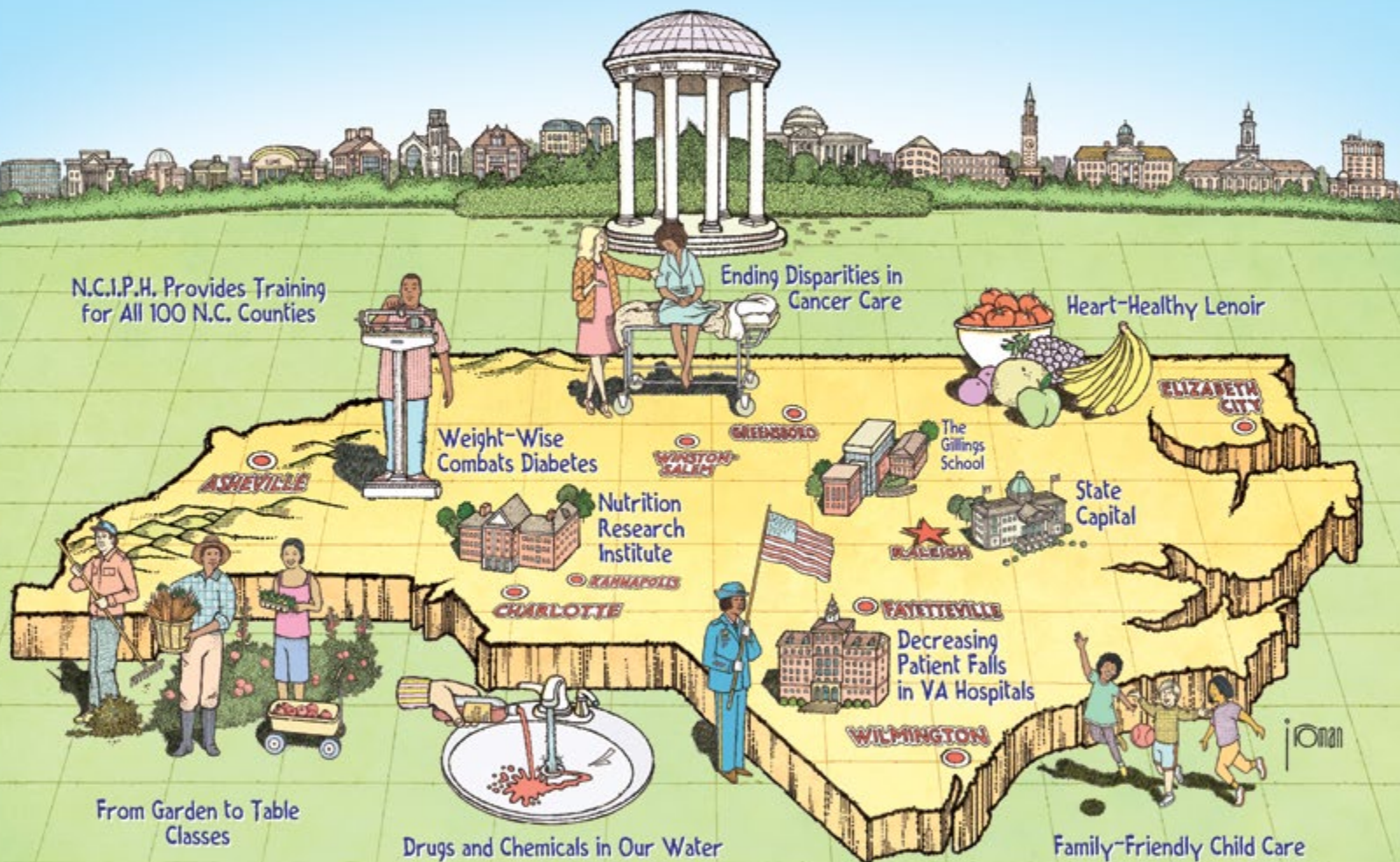


# CAROLINA PUBLIC HEALTH

Gillings School of Global Public Health

The University of North Carolina at Chapel Hill

FALL 2013 • VOLUME 2 • NUMBER 5



## Solving North Carolina's Public Health Challenges

## Public Health Foundation Incorporated BOARD OF DIRECTORS

**Delton Atkinson, MPH, MPH, PMP**  
President  
*Acting Director*  
Division of Vital Statistics  
National Center for Health Statistics  
Centers for Disease Control and Prevention

**Paula Brown Stafford, MPH**  
Vice President  
President, *Clinical Development*  
Quintiles

**Barbara K. Rimer, DrPH**  
Executive Vice President  
Ex Officio  
Dean and  
*Alumni Distinguished Professor*  
Gillings School of Global Public Health

**Peggy Dean Glenn**  
Executive Director/Secretary  
Ex Officio  
*Associate Dean for External Affairs*  
Gillings School of Global Public Health

**Charlotte Nuñez-Wolff, EdD**  
Treasurer  
Ex Officio  
*Associate Dean for Business and Finance*  
Gillings School of Global Public Health

**David J. Ballard, MD, MSPH, PhD, FACP**  
Senior Vice President and  
*Chief Quality Officer*  
Baylor Health Care System  
Executive Director and BHCS  
Endowed Chair  
Institute for Health Care  
Research and Improvement

**Antonio S. Braithwaite, DDS, MPH, PA**  
Diplomate, American Board  
of Pediatric Dentistry  
Sanford Pediatric Dentistry

**P. LaMont Bryant, PhD, RAC**  
Director, *Regulatory*  
Affairs-Biosurgery  
Ethicon/Johnson & Johnson

**Cynthia H. Cassell, PhD, MA**  
Health Scientist  
National Center on Birth Defects  
and Developmental Disabilities  
Centers for Disease Control  
and Prevention

**Deniese M. Chaney, MPH**  
Principal  
Accenture Health and Public Service

**Stacy-Ann Christian, JD, MPH**  
Associate Director  
Research Administration and Finance  
Northeastern University

**Michael (Trey) A. Crabb III, MHA, MBA**  
Managing Director, *Healthcare Mergers, Acquisitions and Strategic Services*  
Ziegler Investment Banking

**David Dodson, MDiv**  
President  
MDC Inc.

**Cynthia J. Girman, DrPH**  
Executive Director, *Department of Epidemiology*  
Merck Research Laboratories

**Andrea M. Griffin, BSPH**  
Board Member  
Lake Norman Community Health Clinic

**Priscilla A. Guild, MSPH**  
President  
Gillings School of Global  
Public Health Alumni Association  
and North Carolina Citizens  
for Public Health

**Alma (Gibbie) Harris, MSPH, RN**  
Health Director  
Buncombe County (N.C.)  
Department of Health

**Deborah Parham Hopson, PhD, RN**  
Assistant Surgeon General  
Associate Administrator  
HIV/AIDS Bureau  
Health Resources and  
Services Administration

**Joan C. Huntley, PhD, MPH**  
Adjunct Professor of *Epidemiology*  
Gillings School of Global Public Health

**Mark H. Merrill, MSPH**  
President and *Chief Executive Officer*  
Valley Health System

**Stephen A. Morse, MSPH, PhD**  
Associate Director for  
*Environmental Microbiology*  
National Center for Emerging  
Zoonotic Infectious Diseases  
Centers for Disease Control  
and Prevention

**Douglas M. Owen, PE, BCEE**  
Executive Vice President  
ARCADIS U.S.

**Jonathan J. Pullin, MS**  
Academic Success Coach  
OASIS Department  
Johnson C. Smith University

**Roy J. Ramthun, MSPH**  
Senior Adviser, *Health Policy*  
West Health Policy Center

**Laura Helms Reece, DrPH**  
Chief Executive Officer  
Rho

**James Rosen, MBA, MSPH**  
Partner  
Intersouth Partners

**Jacqueline Sargent, MPH, RD, LDN**  
Health Promotion Coordinator/  
Health Education Supervisor  
Granville-Vance (N.C.) District  
Health Department

**Celette Sugg Skinner, PhD**  
Professor and *Chief, Behavioral and Communication Sciences*  
Department of Clinical Sciences  
Associate Director for *Cancer Control and Population Sciences*  
Harold C. Simmons Cancer Center  
University of Texas Southwestern  
Medical Center

**Senthil N. Sundaram, MD, MPH**  
Cardiologist  
WFP – Raleigh Cardiology

**Edgar G. Villanueva, MHA, FACHE**  
Owner/Principal  
Leverage Philanthropic Partners

**Alice D. White, PhD**  
Vice President (Retired)  
Worldwide Epidemiology Department  
GlaxoSmithKline

**Chen-yu Yen, PhD, PE**  
President and *Chief Executive Officer*  
TerraSure Development LLC  
Vice President  
Gannett Fleming Inc.  
Senior Vice President  
Gannett Fleming Sustainable  
Ventures Corp.

## UNC Gillings School of Global Public Health ADVISORY COUNCIL

**Donald A. Holzworth, MS**  
Chair  
*Executive in Residence*  
Gillings School of Global Public Health

**James Rosen, MBA, MSPH**  
Public Health Foundation Board  
Liaison to Advisory Council  
Partner  
Intersouth Partners

**Marcia A. Angle, MD, MPH**  
Adjunct Professor  
Nicholas School of the Environment  
Duke University

**William K. Atkinson, PhD, MPH**  
Former President and *Chief Executive Officer*  
WakeMed

**Gail H. Cassell, PhD, DSc (hon)**  
Vice President, *Scientific Affairs*  
(Retired)  
*Distinguished Lilly Research Scholar for Infectious Diseases*  
Eli Lilly and Co.

**Willard Cates Jr., MD, MPH**  
Distinguished Scientist and *President Emeritus*  
FHI 360

**Keith Crisco, MBA**  
Chair  
N.C. Communities and Business Alliance

**Michael J. Cucchiara**  
Managing Partner  
Graypants Inc. and Pangea Foods

**Leah Devlin, DDS, MPH**  
Gillings Professor of the Practice  
Gillings School of Global Public Health

**Jeffrey P. Engel, MD**  
Executive Director  
Council of State and Territorial  
Epidemiologists

**Ken Eudy**  
Chief Executive Officer  
Capstrat

**James R. Hendricks Jr., MS**  
Vice President, *Environment, Health and Safety* (Retired)  
Duke Energy

**E. Wayne Holden, PhD**  
President and *Chief Executive Officer*  
RTI International

**Michael E. Kafrissen, MD, MSPH**  
Research Scientist  
Massachusetts Institute of Technology

**John McConnell**  
Chief Executive Officer  
McConnell Golf

**Jesse Milan Jr., JD**  
Vice President and Director  
Community Health Systems  
Altarum Institute

**James Patrick O'Connell, PhD, MPH**  
(Retired) Chief Executive Officer  
Acea Biosciences Inc.

**Jane Smith Patterson**  
President  
Jane Patterson & Associates

**William G. Ross Jr., JD**  
Attorney and *Visiting Professor*  
Duke University

**Virginia B. Sall**  
Co-founder and Director  
Sall Family Foundation

**Markus Wilhelm**  
Chief Executive Officer  
Strata Solar LLC

**Louise Winstanly, LLB, MSB**  
Attorney and *Medical Ethicist*  
Chapel Hill, N.C.

### MEMBERS EMERITI

**Nancy A. Dreyer, PhD, MPH**  
Global Chief of *Scientific Affairs*  
Senior Vice President  
Quintiles Outcome

**Carmen Hooker Odom, MS**  
Former President  
Milbank Memorial Fund



FROM THE DEAN'S DESK .....	2
INTRODUCTION .....	3

## Features

<i>Jonathan Kotch</i> .....	4
IMPROVING THE HEALTH OF NORTH CAROLINA'S CHILDREN	

<i>Carmen Samuel-Hodge</i> .....	6
REDUCING DIABETES RISK, PREVENTING COMPLICATIONS	

<i>Howard Weinberg</i> .....	9
KEEPING DRINKING WATER SAFE	

<i>N.C. Institute for Public Health</i> .....	12
SERVING COMMUNITIES, HEALTH PROFESSIONALS	

<i>Geni Eng</i> .....	15
FINDING STRENGTH IN DIVERSITY	

<i>Alice Ammerman</i> .....	18
HEART-HEALTHY LENOIR COMBATS HEART DISEASE	

<i>Bill Gentry</i> .....	20
PREPARING FOR DISASTERS	

ALUMNA PERSPECTIVE (Pam Silberman) .....	22
--	----

SCHOOL NEWS .....	23
-------------------	----

AWARDS & RECOGNITIONS .....	27
-----------------------------	----

STUDENT INTERNSHIPS .....	29
---------------------------	----

RESEARCH ANNUAL REPORT .....	34
------------------------------	----

Our Donors .....	36
------------------	----

<i>Honor Roll of Donors</i> .....	37
-----------------------------------	----

<i>Fred and Laura Brown</i> .....	38
-----------------------------------	----

<i>Deniese Chaney</i> .....	42
-----------------------------	----

<i>Linda West Little</i> .....	45
--------------------------------	----

<i>Jo Anne Earp Tribute Fund</i> .....	48
--	----

<i>Annual Fund</i> .....	51
--------------------------	----

<i>Barry Popkin</i> .....	52
---------------------------	----

<i>Family of Sarah Morrow</i> .....	58
-------------------------------------	----

6



15



4



# TABLE of CONTENTS

20



29



9



# from the DEAN'S DESK

In 2015, we mark the 75th anniversary of the UNC Gillings School of Global Public Health. In this issue, we focus on some of the many faculty and staff members and students at the School whose work benefits North Carolina. We are committed today, as were those who came before us, to training tomorrow's public health leaders for North Carolina and solving big public health

1988 completion of Cane Creek Reservoir, a resource that assured adequate water supply for people in Chapel Hill up to the present time.

In the 1990s, the practical, applied research of health behavior professors Geni Eng, Jo Anne Earp and others led to increases in mammography use among low-income, black women in eastern N.C., reducing cancer-related

health. At the same time, our success accrues to N.C.—through the 5,500 or so jobs we create each year due to research funding; our 450 or so graduates each year, the majority of whom stay in N.C.; and through the knowledge we discover and the programs and products we develop and disseminate to North Carolinians.

Our future and North Carolina's future are intertwined inextricably.

Charles Kuralt, journalist, UNC alumnus, and host of *On the Road* and *Sunday Morning*, understood this when he said at the 1993 UNC bicentennial:

*...Our love for this place is based on the fact that it is, and was meant to be, the University of the people.*

problems. We are making the state and its people healthier, safer and stronger.

As a *public* school of public health, we are not just co-located in North Carolina. We are embedded in and committed to our state. Without being parochial (we are a *global* school of public health, after all), we take seriously the *public* in public health and have a long, proud tradition of serving the state first.

As a UNC faculty member from 1952 to 1982, the late Dr. Dan Okun, Kenan Distinguished Professor of environmental sciences and engineering, taught and conducted research about local drinking water supply and purity. His studies led to the development and

health disparities between black and white women.

These are two examples out of thousands.

We make a positive difference for the environment and health of North Carolinians. This issue provides great proof of that. I only wish there were space to cover all the exciting work we are doing in North Carolina.

Our success benefits the entire U.S. and the world, a reality that fuels our reputation as a premier school of public

And that is as it should be. As a *public* school of public health, we are of the people.

Thank you for your support of the School! We welcome your feedback at any time.

*Barbara K. Rimer*

DR. BARBARA K. RIMER



# INTRODUCTION

## *A glimpse into our work across North Carolina*

Here at the Gillings School of Global Public Health, we don't just *say* "Local is global"—we live it every day.

We've been proudly and enthusiastically providing innovative public health education, research, solutions and service for nearly 75 years to North Carolina's residents – from the coast to the mountains and everywhere in between. There aren't enough pages in this issue of *Carolina Public Health* – or in the next ten issues – to cover all of it. Here, we offer a brief, rich glimpse of some of our efforts right now throughout the state.

The feature stories on the following pages highlight only a few of North

Carolina's public health challenges and the Gillings School researchers and practitioners who are addressing them. Many faculty members and students, through their research, teaching and service, are engaged personally in providing solutions for public health problems in their home state.

Illustrations from our cover are repeated in the context of the work they represent. In the center of the magazine is a photo essay that hints at the tremendous work our students do through summer internships across North Carolina. Our enthusiastic, knowledgeable and extremely motivated ambassadors for public health

take on real-world issues and participate in solutions that touch hundreds – if not thousands – of people each year.

First and foremost, we love giving back to the people of our state. We know that the many lessons we learn and solutions we develop locally can be applied globally, just as *we* learn from solutions developed in other communities around the world. This reciprocity is a win-win for the people of North Carolina and around the world.

Enjoy!

—David Pesci

Scan  
code  
below!



DEAN  
Barbara K. Rimer, DrPH

COMMUNICATIONS DIRECTOR  
David Pesci

EDITOR  
Linda Kastleman

ASSOCIATE DEAN FOR  
EXTERNAL AFFAIRS  
Peggy Dean Glenn

DESIGN AND PRODUCTION  
UNC Creative

COVER ILLUSTRATION  
John Roman

#### CONTRIBUTING WRITERS

Amanda Crowe, Christin Daniels, Ramona DuBose, Linda Kastleman, Kathleen Kearns, Michele Lynn, Sandy Martin, Nancy Oates, David Pesci, Barbara K. Rimer, Pam Silberman, Sonya Sutton

Send correspondence to Editor, *Carolina Public Health*, Gillings School of Global Public Health, Campus Box 7400, Chapel Hill, NC 27599-7400, or email [sphcomm@listserv.unc.edu](mailto:sphcomm@listserv.unc.edu).

SUBSCRIBE TO CAROLINA PUBLIC HEALTH  
[www.sph.unc.edu/cph](http://www.sph.unc.edu/cph)

19,000 copies of this document were printed at a cost of \$20,719 or \$1.09 per copy.

*Carolina Public Health* (ISSN 1938-2790) is published twice yearly by the UNC Gillings School of Global Public Health, 135 Dauer Dr., Campus Box 7400, University of North Carolina at Chapel Hill, Chapel Hill, NC 27599-7400.

Vol. 2, No. 5, Fall 2013



# JONATHAN KOTCH

*Improving the health and safety of North Carolina's children*

Dr. Jonathan Kotch (left) has made life better for tens of thousands of children in North Carolina. His research and advocacy have changed policies about family health, and he has helped set national standards.

Kotch's accessibility contributes to his success, says June Locklear, who until her retirement, headed the regulatory section of the N.C. Division of Child Development.

"He can speak at any level – to child-care providers who weren't college-educated and to those who run facilities of 100 children or more," Locklear says.

Kotch, the Carol Remmer Angle Distinguished Professor of Children's Environmental Health in the Gillings School's Department of Maternal and Child Health until his phased retirement in 2013, has placed children first throughout his 40-year career. As founder of the National Training Institute for Child Care Health Consultants, he helped train health practitioners to monitor child-care facilities and mentor child-care providers in the implementation of stringent sanitation and injury-prevention practices. He taught providers to identify maltreatment of a child and recognize early signs of emotional distress and other special needs.

After 16 years of training instructors of child-care health consultants across the U.S., the Institute recently lost federal funding due to sequestration and was forced to close. However, Kotch continues to direct the N.C. Child Care Health and Safety Resource Center ([healthychildcarenc.org](http://healthychildcarenc.org)), a similar organization supported by state funds. The center trains North Carolina child-care health consultants and contracts to train providers from other states.

Having made tremendous progress reducing disease and injuries, the resource center now devises ways to incorporate nutrition and physical activity to prevent obesity and address social and emotional health.

"The more we can do for young children," Kotch says, "the healthier adults we'll have in North Carolina."

Kotch launched the Family Friendly Child Care Project, and the Beaufort-Hyde Partnership for Children was one of its pilot sites. Lisa Woolard, the partnership's executive director, says Kotch always took care of important details. He found medical homes for children and conducted long-term studies that followed children for 20 years to assess the impact of exposure to abuse and neglect upon their health and behavioral outcomes.

The staff members always looked forward to his site visits, she says. Something fascinating would happen when he arrived in his tweed coat and cap.

"Good golly, he's a smart man," Woolard says. "He drives himself to meet his own high standards, and he wants others to be at that high standard, too."

Locklear remembers Kotch's using a fluorescent spray, which glowed in the dark upon contact with bacteria, to demonstrate how germs collect on the underside of a table used by children. He and his staff developed a poster that leads children, step by step, through the hand-washing process, including the words of a song that lasts as long as handwashing should.



#### 406 NC CHILD CARE HEALTH CONSULTANTS

trained by Dr. Jonathan Kotch's N.C.  
Child Care and Safety Resource Center

"These seem like such little things, but they're still being used," Locklear says. Thanks to those auditory and visual reminders, a generation or two of North Carolina's children are healthier than they might have been.

Tristan Bruner, evaluation coordinator for another Family Friendly Child Care site, the Lenoir-Greene Partnership for Children, points out that the pilot sites were located in out-of-the-way, downtrodden areas of the state.

"The residents here are poor and easy to forget," Bruner says, "but they were on Dr. Kotch's mind the most."

—Nancy E. Oates





Tailored approaches reduce diabetes risk  
and prevent secondary complications

# CARMEEN SAMUEL-HODGE





When Carmen Samuel-Hodge left her home in the Virgin Islands in 1985, diabetes had just begun to be a public health problem. As a dietitian, she was seeing many clinic patients who had presented with a diabetes diagnosis. Wanting to learn more about the problem and how to address it, she pursued a nutrition doctorate at UNC.

Upon arriving in North Carolina, Samuel-Hodge discovered that diabetes was also disproportionately high among the state's African-Americans. Now a research assistant professor of nutrition in the Gillings School of Global Public Health and of medicine and social medicine in UNC's School of Medicine, she has focused her research efforts in the Tar Heel state.

Her first step was to listen to what North Carolinians had to say.

"When I came here, I decided to become more familiar with the people," she said. "Even though I knew African-Americans would have a lot in common with patients in the islands, I

also knew there would be differences. I needed to know more about what day-to-day issues were most important, the beliefs and attitudes around diabetes, and what it would take to improve daily behaviors for living well with diabetes. Those contexts would allow me to design better interventions."

Recently Samuel-Hodge has tested two new interventions with promising results.

The Centers for Disease Control and Prevention funded the first project, called Weight Wise. In its pilot stage, Samuel-Hodge and her team led weekly meetings at a Wilmington, N.C., community health center to support mid-life, low-income women with

diabetes or at risk for diabetes, as they learned new strategies to improve their activity levels and diet. For 16 weeks, the women weighed in, discussed successes, challenges and weight management topics, came up with solutions to problems and set individual goals.

The intervention was an adaptation of the Diabetes Prevention Program (see [tinyurl.com/diabetes-prevention-program](http://tinyurl.com/diabetes-prevention-program)), which found that people with elevated blood glucose could delay or prevent diabetes onset by losing about 7 percent of their body weight (e.g., a 200-pound person's losing 14 pounds).

The program shared some characteristics with those run by commercial weight loss companies, but Samuel-Hodge and her team tailored Weight Wise to the needs of these particular women.

"We changed food selections to be consistent with choices and preferences of the Southern population," she said. "We targeted foods that would be within the affordable range for a lower-income population. We accepted that there would be times our participants couldn't afford fresh vegetables, so we found ways to use canned or frozen, for



## EDUCATION AND INCOME MATTER!

Diabetes prevalence in N.C. was **3 TIMES** higher in 2010 among those with a high school education (18%), compared with college graduates (5.9%).

Diabetes is **3.6** times higher among people with household incomes of less than **\$15,000**, compared with people making **\$75,000** or more per year.

Regardless of income or education, the rate of diabetes among African-Americans is higher, compared to the rate for whites.

"That's why I target my research efforts to address health outcomes among African-Americans and low-income populations, Samuel-Hodge says. "We have a long way to go."

Participants in Samuel-Hodge's Family PALS learned strategies for weight loss and for improving family interactions.



example, rinsing off the extra sodium from canned products.”

The women in the study lost about 5 percent of their initial body weight.

Samuel-Hodge's next question was whether the program would work as well if local health departments, rather than her research team, managed it.

“You want to translate research,” she says, “so that it becomes part of practice.”

She and her colleagues trained staff members at six health departments from across North Carolina to run programs in their communities. Again, the results were striking – participants lost an average 4 percent of their body weight, and a significant number lost 5 percent.

Samuel-Hodge says that because she and her team adapted the Weight Wise intervention for a lower-income population, it has great potential for dissemination. In fact, groups in a number of other states already have asked for the materials through the UNC Center for

Health Promotion and Disease Prevention's Web-based translational research site ([www.centertrt.org](http://www.centertrt.org)).

Samuel-Hodge's other recent project, Family PALS (Partners in Lifestyle Support), paired African-American adults who have Type 2 diabetes with adult family members who do not have the disease. Both adults had to be overweight or obese and had to want to lose weight. Together, the pairs attended 20 weekly sessions and learned strategies for weight loss and for improving family interactions through better communication and less conflict. The National Institute of Diabetes and Digestive and Kidney Diseases funded the study.

“In populations with high rates of diabetes, such as African-Americans, you often find that a person who doesn't have the disease says, ‘I want to enjoy life until I get it [diabetes],’ instead of ‘I should be doing what I can to prevent it,’” says Samuel-Hodge. “Often, other family members tell the person with diabetes, ‘You can't eat that,’ rather

than, ‘We all should be eating differently and watching our weight.’

Family members see themselves as being helpful, but the person with diabetes perceives it as nagging or being policed.”

Working with a clinical psychologist, Samuel-Hodge developed segments to address family conflict and improve communication, support and cohesion within families. When the sessions ended, improvements were seen on all fronts. Participants lost an average 4.5 kg (almost 10 pounds), and physical activity increased. Dietary habits improved, and so did family interactions. There was less diabetes conflict, better communication, more togetherness, and more support for dietary and physical activity behaviors.

“We've seen the PALS program work on a pilot level with 54 pairs,” Samuel-Hodge says. “We need to run it again with a larger sample. There's still a lot of work to do.”

—Kathleen Kearns

---

**35**  
**YEARS**

**35 YEARS  
AND COUNTING**

The UNC Minority Health Conference is the longest-running, largest, student-led conference focused on minority health in the nation.

---



A photograph of Howard Weinberg, an older man with grey hair and glasses, wearing a white lab coat. He is holding a red folder and pointing at it. He is surrounded by five female students, also in white lab coats, who are looking at the folder with interest. They are in a laboratory setting with shelves of books and equipment in the background.

# HOWARD WEINBERG

PHOTO BY LINDA KASTLEMAN

## IDENTIFYING PRACTICES TO KEEP NC'S DRINKING WATER SAFE

Even in a country as developed as the U.S., the purity of drinking water is vulnerable to climate changes, major storm systems and the consequences of human behavior. Now, a new trend has fueled national and local discussions about the best ways to protect this vital resource – the introduction of industrial, agricultural and pharmaceutical chemicals into our water supply.

Weinberg, left, meets with students in his lab.



## WEINBERG AND NC'S ENVIRONMENTAL HEALTH SUMMIT

Weinberg has collaborated with researchers at The University of North Carolina at Chapel Hill, Duke University, N.C. State University, RTI International and many utility partners to study environmental issues in the state, including how to protect the safety of North Carolina's drinking water.

In November 2008, Weinberg was one of the group leaders of North Carolina's Environmental Health Summit, which explored issues associated with the presence of pharmaceuticals in water. More than 150 attendees from government organizations, academia, industry, water utilities and public interest groups discussed how to evaluate current knowledge on the topic and identify research gaps and innovative recommendations.

A report on the meeting, published in *Environmental Health Perspectives* in 2010, is available online at [tinyurl.com/NC-envr-health-summit](http://tinyurl.com/NC-envr-health-summit).

"We are talking about trace levels of pollutants – barely detectable, using current methods – but there can be fluctuations in these levels, for example, when we have heavy rains," says Howard Weinberg, PhD, associate pro-

different treatment processes in removing a wide range of human-made chemicals from surface waters. They found that treatments most often used to keep particles, bacteria and color out of drinking water are ineffective in

It's an inglorious reflection of our lifestyle that our waterways shine back upon us – pharmaceutical products, caffeine, detergents, sunscreen, insect repellents and who-knows-what from fracking and other industrial processes.

—HOWARD WEINBERG, PHD

fessor in the Gillings School's Department of Environmental Sciences and Engineering.

While health effects of these contaminants are still unknown, Weinberg says their very presence underscores a need to identify which chemicals are in our water and what steps can be taken to keep drinking water safe.

Water resources and treatment managers in North Carolina seem to agree. Trying to stay ahead of the curve, a consortium of utilities across the state contacted Weinberg for his expertise in tracking the source and fate of pollutants in surface water.

In a recent study, he and his research team tested the effectiveness of four

removing chemicals found in pharmaceutical drugs, personal care products, pesticides, flame retardants and other substances.

Most municipal treatment plants prepare drinking water using a combination of chemicals, mixing and filtration. When researchers used a specially formulated carbon, they were able to determine whether most pollutants were removed or decreased to undetectable levels. In some cases, they found that the disinfectant chemicals reacted with pollutants, converting them into forms that previously had avoided detection.

"Clearly, watershed protection is the first barrier," Weinberg says, "but at



least treatment plants now have an option for protecting consumers. Activated carbon can be used to filter water at the plant.”

The carbon treatment is costly, possibly prohibitively so, both for smaller municipalities – which often are downstream from larger cities’ treated effluent discharges – and for communities whose members rely on wells, which might be contaminated by failed septic systems. Many small towns in North Carolina might be affected.

“We have the technology to protect consumers from exposure to many pollutant chemicals in drinking water,” Weinberg says. “But it comes at a cost – either at the front end, from manufacturing, use and disposal, or at the last barrier, in the treatment plant and at the consumer’s tap.”

The good news, according to Weinberg, is that by working collaboratively and leveraging resources available at the Gillings School, many of the challenges can be addressed holistically now.



#### THE WATER INSTITUTE AT UNC

Led by Dr. Jamie Bartram, the Institute draws 500 participants from 47 countries to its annual fall conference.

[waterinstitute.unc.edu](http://waterinstitute.unc.edu)

## WHAT’S IN THE WATER, EXACTLY?

Detergents and soaps – some of which have ingredients that disrupt the endocrine system – often are found in domestic waste waters and septic tanks. If a septic tank leaks, these ingredients may reach groundwater, a source for drinking water. Other chemicals found in surface waters that are taken into drinking water plants include atrazine (herbicide), DEET (insecticide), caffeine (stimulant), flame retardants, pharmaceuticals and more.

At one time, people were directed to flush unused medications to prevent misuse by others, especially children. That advice has changed. It may help protect water supplies to have designated days during which people return unneeded drugs to a central authority for safe disposal. This may be only part of the solution, however, since most of the trace amounts of pharmaceuticals in the water are introduced through human or animal waste.

Gregory Characklis, PhD, professor of environmental sciences and engineering at the Gillings School and director of UNC’s Center for Watershed Science and Management, says Weinberg’s research is important if we are to identify ways to treat water sources once contaminants are detected. The larger question is whether we should invest in keeping these contaminants out of the environment in the first place.

“As a rule of thumb, it is usually less costly to prevent problems,” Characklis says, “but this is a complicated question. One of the first steps is to figure out what exactly is in the water.”

Experts at UNC and beyond agree that many measures are needed. These may include improved watershed protection measures, indicators of wastewater pollution in the source water, effective treatment technology, stricter regulations, consumer education and/or changes in manufacturing processes.

—Amanda Crowe

# FEET ON THE GROUND

NCIPH serves communities  
and public health professionals



Students, faculty members, Dean Rimer and Orange County Health Department staff members enjoyed the 2013 Practice Pathways Field Trip.



**For 14 years, the Gillings School's North Carolina Institute for Public Health (NCIPH) has bridged the gap between academics and practice in North Carolina and beyond. The NCIPH is a provider of information and training, a connector and go-to place for brokering needs and the people who can fulfill them. Its ultimate mission is to improve the health of North Carolinians.**

One of the NCIPH staff's most important tasks is to develop, deliver and support training for current public health workers. By partnering with other organizations, responding to the needs of those on the front lines of practice and contributing to others' efforts, NCIPH staff members made an impact upon nearly 25,000 people in fiscal year 2012, including more than 13,000 people in N.C.

Using a range of tools from brief, online instruction to in-depth continuing education programs and professional conferences, NCIPH staff members educated and prepared practitioners from all 100 N.C. counties, all 50 U.S. states and 177 countries.

"The Institute is committed to transforming the practice of public health," says Anna Schenck, PhD, the Gillings School's associate dean for public health practice and director of the School's NCIPH and Public Health Leadership Program. "We connect the School with public health practitioners in communities across the state and beyond. This two-way collaboration, with ideas and solutions flowing in both directions, helps to improve both the science and practice of public health."

Among the Institute's most requested services are training sessions for school health nurses (conducted annually) and a biennial conference on immunization, both of which draw hundreds of participants. Staff members lead online educational sessions in introductory public health and public health law and provide management and leadership training to hundreds of public health professionals every year.

Staff members also provide technical assistance to the public health practice community. One example is the Institute's administration of the local health department accreditation program ([sph.unc.edu/nciph/accred](http://sph.unc.edu/nciph/accred)) to improve the consistency and quality of local health services. To date, 79 local health departments in the state have received a four-year accreditation. Some of those evalu-

ated early in the program already have been reassessed.

"The Institute has been instrumental in the development and implementation of this statewide accreditation process, one of the first in the country, that assures that all local



## **7,408 PUBLIC HEALTH PRACTITIONERS**

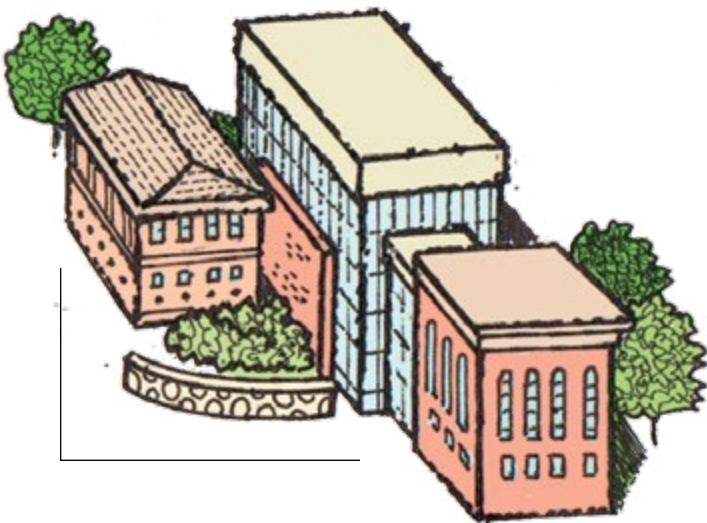
trained every year by the  
School's North Carolina Institute  
for Public Health (NCIPH)

health departments meet a minimum set of standards and that all residents of the State have access to credible, needed services," says Gibbie Harris, MSPH, BSN, RN, local health director in Buncombe County, N.C.

The innovative incubators program ([sph.unc.edu/nciph/incubator](http://sph.unc.edu/nciph/incubator)) managed by the Institute provides resources for local departments to collaborate and address common challenges. Over the last couple years, those common concerns have included ways to better communicate the value of public health and best practices for local departments under the new health care law.

The Institute also has a long history of assisting with mandatory community health assessments, which are part of periodic strategic planning in every county in the state.

In 2013, Wake County leaders selected Institute personnel to conduct their county's community health assessment. Wake County Human Services established an innovative and unprecedented partnership with three local hospitals (WakeMed Health and Hospitals,



## 1999 - 2013 ...AND BEYOND

The N.C. Institute for Public Health was established in August 1999 by founding director William Roper, MD, MPH, then dean of UNC's public health school. Roper said the Institute was envisioned in response to the Institute of Medicine's landmark 1989 report, "The Future of Public Health," which identified critical gaps in workforce capacities of public-health organizations to improve the public's health. A major point of the report was that the study of public health had become too distant from its practice.

"With the Institute, we hope to widen our circle of collaboration – to work closely with the public and private sectors, with government and business, with health-care providers, researchers, policy makers and others in the field," Roper said.

Duke Raleigh, and Rex Healthcare), Wake Health Services, United Way of the Greater Triangle, Wake County Medical Society and Urban Ministries to complete a joint assessment. More than 60 nonprofit, government, faith-based, education, media and business organizations participated to identify needs and priorities for the next three years. Among those priorities are poverty and unemployment, health care access and utilization, and mental health and substance use.

With Robert Wood Johnson Foundation funding, NCIPH staff members analyze the impact of economic recession upon public health outcomes. They collected data showing significant variations in county public health department spending per capita. Now, the study focuses upon benefits resulting from these local health department

expenditures. When cost and benefits are assessed over time, officials can see more clearly the returns on an investment in public health. Counties that allot more of their budgets to public health programs, for example, have fewer reports of illness.

"These analyses will provide us with better tools to measure return on investment in public health," says Schenck, who leads the study.

NCIPH staff members also introduce Gillings School students to community public health issues and resources. Incoming public health students get insights into the realities and opportunities of practice through the annual Practice Pathways PHield Trip to the Orange County (N.C.) Health Department.

One of the School's most valuable training experiences for students is Team Epi-Aid, an Institute initiative. The award-winning volunteer group, established in 2003, matches graduate students with local and state health departments to assist with outbreak investigations and other short-term, applied public health projects. In its decade of fieldwork, Team Epi-Aid has involved more than 300 students in 70 activities requiring about 6,000 hours of service.

"We're so fortunate to have the Institute, with its commitment to local public health, right here in our backyard," says Colleen Bridger, PhD, Orange County Health Director. "The organization is a great partner for us and excels at bringing practitioners and academicians together to strengthen public health throughout the state."

—Ramona DuBose



Bill Gentry (see page 20) served as a survey team member in September when the Institute led a community health assessment in Durham County, N.C.

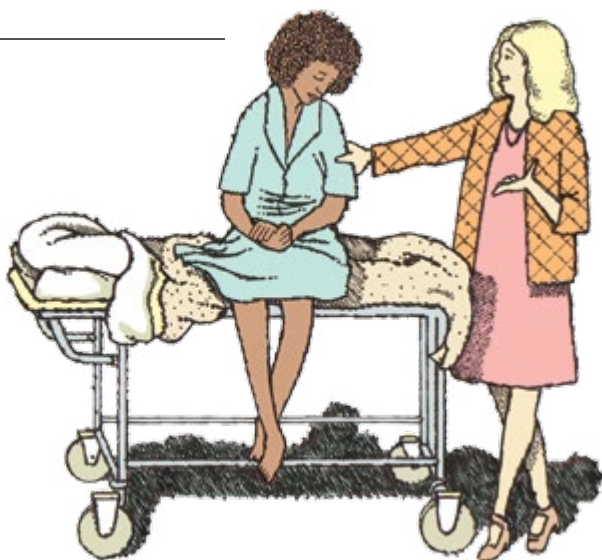


# GENIE

**Power of community, strength in diversity**

Growing up on a small farm in Jacksonville, Fla., as the great-granddaughter of a Chinese immigrant tenant farmer, Eng experienced cultural clashes as well as the power of community.





“I saw how communities can come together,” says Eng, professor of health behavior at the Gillings School. “That’s a large part of why I gravitate toward looking at culture and how it’s intertwined with health.”

Her Peace Corps service with community health workers in Togo strengthened her belief that one must address cultural values to change health behaviors.

For the last decade, Eng has highlighted the value of community and cultural awareness through her membership in the Greensboro Health Disparities Collaborative (GHDC), an academic-community coalition. “We have partnered with community members to fine-tune research questions, determine the methods most culturally authentic and appropriate to gain information that is hidden and elusive from mainstream society, and gain an insider’s view on why health inequities persist in these communities,” Eng says.

“Geni has the ability to be a true collaborator and to partner with very diverse groups,” says Jennifer Schaal, MD, GHDC’s secretary and a founding member. “She doesn’t try to run the show, and she’s able to share her

expertise without acting like she’s the only expert.”

Eng and The Partnership Project ([www.greensboropartnership.com](http://www.greensboropartnership.com))—which manages GHDC—began collaborating in 2003; Eng offered her expertise in community-based participatory research (CBPR), and the Project offered a framework for undoing

racism. “Using a systems approach, we are examining how the lack of transparency and accountability enables health care inequities to continue,” Eng says.

The group first designed the Cancer Care and Racial Equity Study, a two-year exploratory study funded by the National Cancer Institute, to better understand how cancer treatment was implemented at Greensboro’s Cone Health Cancer Center and why inequities were present. “We identified the pressure-point encounters that were different for white women and African-American women,” Eng says. “We explored the nuances of two groups of women going through the same cancer-care system but having different communication issues and different reactions to the protocols.”

Eng’s team works to narrow treatment disparities between black and white women with breast and lung cancers.





Their findings informed the development of a five-year study known as ACCURE (Accountability for Cancer Care through Undoing Racism and Equity). Begun in 2012 with UNC professor of medicine Sam Cykert, MD, as Eng's co-principal investigator, ACCURE is a National Cancer Institute-funded collaboration among UNC, The Partnership Project Inc., Cone Health and the University of Pittsburgh Medical Center.

"ACCURE tests the effectiveness of reorganizing cancer care in two cancer centers," Eng says. "We are aiming to optimize the quality of care and narrow treatment disparities between white and African-American patients with a first diagnosis of Stage 1 or 2 breast and lung cancers. Not receiving good care in these instances contributes to unnecessary deaths."

ACCURE's innovations are an electronic real-time registry that signals deviations from standards of care; training "nurse navigators" to use this registry and to communicate with patients and medical professionals about things that improve or prevent the achievement of optimal standards of care; the use of a "physician champion," who provides ongoing findings about race-specific treatment progress and promotes training in health-care equity for medical professionals; and patient engagement to generate an analysis of power and authority within the cancer-care system that informs the work of nurse navigators and physician champions.

"Our goal with this work is that disparities in treatment outcomes by race and ethnicity will fade," Eng says.

Left to right are Amondre Smith, ACCURE research assistant and senior at N.C. Central University; Nora Jones, Partnership Project Inc. executive director; Jennifer Schaal, former board chair of the Project; and Janet Jeon, ACCURE graduate research assistant and health behavior doctoral student at Gillings. The group came together in September at a meeting of the Greensboro Health Disparities Collaborative.



PHOTO BY KRISTIN ZENEE BLACK

"This is to the benefit of all patients who have cancer."

Eng says that CBPR is important for North Carolina. "The changes in the state's demographics have been quite dramatic and rapid," she says. "Engaging these communities in research helps reveal their strengths. It is essential to see the people in our state not as targets, but as partners, which is critical to developing lasting change."

Nora Jones, GHDC member and president of Sisters Network Greensboro, an African-American breast cancer survivorship organization, has worked with Eng since the collaboration began.

"Geni truly appreciates community organizations, respects them and treats them as equal partners," Jones

says. "She has been a great asset to us as a community group, teaching us skills to be successful both in research and as a community organization overall."

—Michele Lynn

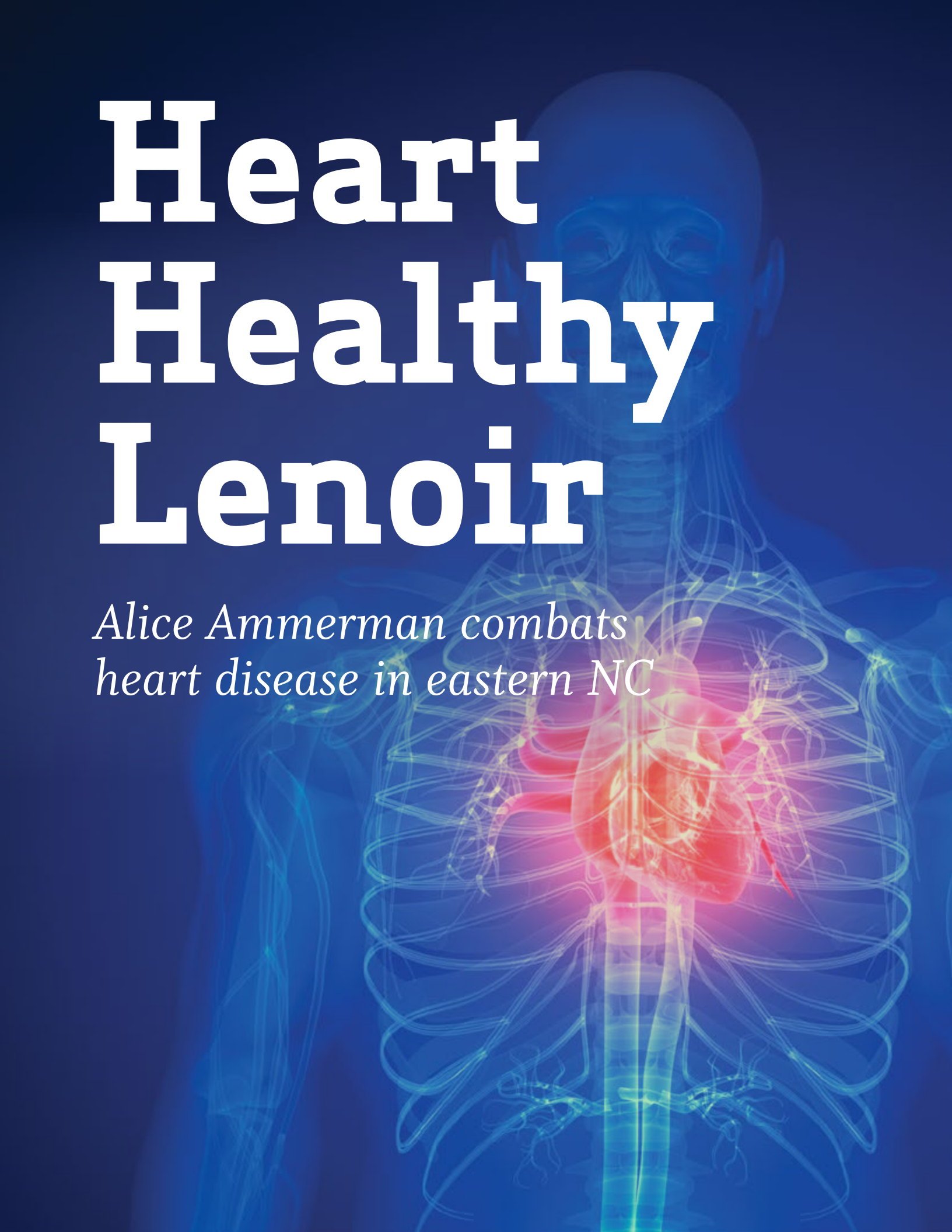


#### 7 KENAN DISTINGUISHED PROFESSORSHIPS AT UNC GILLINGS

Drs. Gerardo Heiss, Michael Kosorok, Herbert Peterson, Barry Popkin, Mark Sobsey, James Swenberg and Steven Zeisel



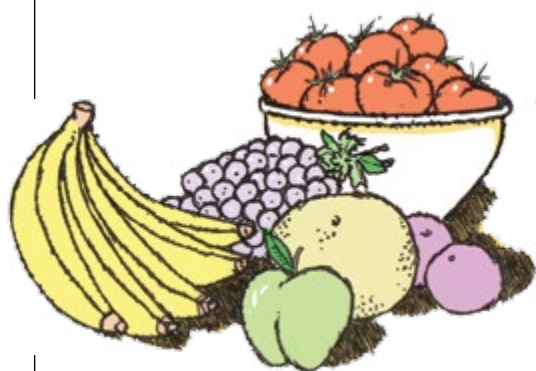
# Heart Healthy Lenoir

A stylized illustration of a human torso, primarily in shades of blue. The heart is highlighted in a vibrant red and pink, glowing with a soft light. The lungs, ribcage, and spine are depicted with thin, translucent blue lines, giving the impression of a medical scan or a digital anatomical model. The overall background is a deep blue gradient.

*Alice Ammerman combats  
heart disease in eastern NC*

**Heart Healthy Lenoir, a community-based research effort based at the UNC Center for Health Promotion and Disease Prevention (HPDP), was established in Lenoir County, N.C., in 2010 to develop and test better ways to tackle cardiovascular disease (CVD) in a vulnerable North Carolina community.**

**Alice Ammerman, DrPH, professor of nutrition at the Gillings School and HPDP director, leads the project in collaboration with her former doctoral student Stephanie Jilcott Pitts, PhD, now associate professor in East Carolina University's Department of Public Health.**



The project uses a three-tiered approach toward prevention and treatment, including a clinic-based blood-pressure study; lifestyle study promoting healthy eating, physical activity and weight control; and a genomics study assessing ways that genes influence CVD and the treatments that work.

Data from early formative work with the project revealed that having too few places where one could obtain a quick, healthy meal was perceived as a major barrier to a heart-healthy lifestyle. In a project survey, 18.6 percent of African-Americans and 7.8 percent of whites reported as a “big problem” that their neighborhoods had

too many fast-food restaurants. As a result, a project component launched in fall 2013 expanded the lifestyle program to empower Lenoir County residents to make healthier choices when dining out.

Three Kinston, N.C., restaurants now offer patrons information about healthier menu choices and provide discount coupons to those who make two healthy choices when they order, such as selecting whole grains, fruits and vegetables, foods made with healthy fats and minimally-sweetened beverages.

Lenoir County has some of the highest rates of heart disease in the U.S., but it also has public health and clinical resources to support the three-tiered approach to reducing CVD. More than 660 participants have enrolled in the five-year study, which is funded by the National Heart, Lung and Blood Institute, one of the National Institutes of Health.

—Sonya Sutton

## GOOD DECISIONS IN THE LUNCH ROOM

Dr. Alice Ammerman, who has spent much of the last 20 years working on food access and education efforts across the state, particularly in eastern North Carolina, also leads the research team for Food Explorers, a new partnership between UNC's Center for Health Promotion and Disease Prevention, Rockingham County (N.C.) Schools and Chef Cyndie Story ([www.chefcyndie.com](http://www.chefcyndie.com)).

The program, which continues until spring 2014, is a social marketing campaign to promote healthy lunch menus and increased consumption of fruits and vegetables at school. Seth Noar, PhD, associate professor in the UNC School of Journalism and Mass Communication, collaborates on the social marketing aspects of the program. Ammerman and Noar also are members of UNC's Lineberger Comprehensive Cancer Center.

Learn more at [tinyurl.com/hpdp-food-explorers](http://tinyurl.com/hpdp-food-explorers).





# Bill Gentry

Preparedness training benefits North Carolina,  
national and global communities





Bill Gentry's preparedness skills are legendary.

From his college days as an emergency medical services technician in Wilmington, N.C., Gentry has valued an organized, collaborative approach to getting the job done – especially when the job at hand is preserving health or saving the lives of humans and animals. His emergency management work led him to UNC in 2005, where he now directs the Gillings School's Community Preparedness and Disaster Management (CPDM) certificate program and consults with local health departments and first-responder personnel in countries as far away as Botswana and Moldova.

N.C., that involved a simulated collision of a tanker truck and school bus. More than 200 responders and volunteer victims participated in the half-day exercise, played out in a busy downtown intersection.

The CPDM program also provided evaluation in a multi-agency, multi-jurisdictional contaminated water exercise involving the Orange County Water and Sewer Authority, Orange County, the UNC campus and UNC Health Care (the hospital system) in investigating, identifying and mitigating a *Cryptosporidium* contamination event. *Cryptosporidium* is a parasite, found in contaminated drinking or recreational water sources, that causes severe diarrhea.

Gentry was at the forefront of the State Animal Response Team (SART), formed in N.C. in response to 1999's Hurricane Floyd. Floyd left more than three million domestic and farm animals dead, and Gentry was asked to help form a network that could save pets and other animals during natural and other disasters.

"The SART model," Gentry says, "is built upon public-private partnering that integrates efforts by government agencies, not-for-profits, business and volunteers to build and support state and local networks. The model is based on our belief in the one medicine/one health concept, which closely aligns human and animal health."



#### 400+ FIRST RESPONDERS

trained statewide every year by the Gillings School's Department of Health Policy and Management

Gentry's areas of expertise are disaster management and preparedness skills training.

He has led training for the Orange County (N.C.) school system to prepare for winter storms, during which students and staff members with special health needs may need to shelter overnight at school.

He facilitated a full-scale hazardous materials exercise in Vance County,

"In all these exercises, Gentry says, "the importance of preparedness, communication and collaboration were emphasized. We stress the importance of sustaining training and education opportunity – and also of sustaining partnerships."

In 2004, the U.S. Department of Agriculture funded a cooperative agreement with N.C.'s SART to develop local animal response teams on a national scale, based on North Carolina's model.

—Linda Kastleman

Gentry (left) and Dr. Jimmy Tickel admire a horse corralled at NCSU's College of Veterinary Medicine.



## ALUMNA PERSPECTIVE

# *NCIOM leads efforts to improve North Carolina's health*



Silberman (right) meets with (l-r) Catherine Joyner, MSW, Kristin O'Connor and Dr. Adam Zolotor.

The people of North Carolina are more likely to live in poverty, die due to preventable conditions and have higher rates of obesity and tobacco use than people in most other states. Therefore, it is no surprise that when comparing health indicators among the 50 states, our state historically has ranked in the bottom third.

In this context, some of the major North Carolina health funders and the N.C. Division of Public Health (NCDPH) asked the North Carolina Institute of Medicine (NCIOM) to create a task force to develop a Prevention Action Plan for the state. The NCIOM was created by the N.C. General Assembly in 1983 to study important issues facing the state and develop workable solutions to those problems.

The task force included state and local policy makers, public health officials, health care professionals, and community and business leaders. In 2009, the group identified major preventable causes of death and disability in the state and evidence-informed strategies to address those risk factors. Two years later, NCIOM led the state's efforts to develop the Healthy NC 2020 objectives. We involved more than 150 people from across the state to identify 40 key indicators of population health, which could be measured over time to assess the state's progress in improving population health. In 2012, we worked with the NCDPH and other partners to develop a

plan to implement evidence-based strategies to improve population health at the local level.

North Carolina has used the Prevention Action Plan and the Healthy NC 2020 report to compete successfully for federal funding to implement comprehensive prevention strategies and enhance the state's data and tracking systems. Already, progress has been made on half of the 40 objectives.

Significant challenges remain. Funding for public health is limited. Historically, only 3 percent of national health care spending has focused on public health and prevention. It is therefore critical to focus our limited resources into evidence-based efforts that have the greatest likelihood of success.

At the same time, we must expand community- and state-level partnerships—such as the successful collaboration between North Carolina hospitals and local health departments—to improve population health. We can continue to improve the health of all North Carolinians, but only if all partners—government, health, insurance, academic, philanthropy, business and community leaders—work together to implement multifaceted strategies to address the major health risks affecting the people of our state.

—Pam Silberman, DrPH

*Dr. Pam Silberman* is president and chief executive officer of the N.C. Institute of Medicine and clinical professor of health policy and management at the Gillings School.

# May–October 2013

# SCHOOL NEWS

READ MORE AT [www.sph.unc.edu/news](http://www.sph.unc.edu/news).

## Selected Publications

**John J.B. Anderson, PhD**, professor emeritus of NUTR, found a relationship between calcium levels and the presence of white-matter lesions in the brain, particularly in men and in people with depression, in a study published June 18 in *Nutrients*.

**Ralph Baric, PhD**, EPID professor, examined the genetic make-up of a dangerous new coronavirus, the Middle East Respiratory Syndrome (MERS-CoV), in an article published online Sept. 16 in *Proceedings of the National Academy of Sciences (PNAS)*.

**Noel Brewer, PhD**, HB associate professor, showed that encouraging physicians to recommend human papillomavirus (HPV) vaccines to adolescent boys and their parents – and educating boys and their families about

the vaccine's importance – are essential to reducing the cancers the virus can cause. Findings were published in the August issue of *American Journal of Public Health*.

A study led by **Alan Brookhart, PhD**, associate professor of EPID, and published June 20 in the *Journal of the American Society of Nephrology* demonstrated that a regimen of smaller doses of iron (administered to dialysis patients for anemia) given over a longer time helps avoid serious infections often caused by larger doses given over shorter periods.

**Guanhua Chen**, BIOS student, and **Michael Kosorok, PhD**, Kenan Distinguished Professor and chair of BIOS and professor of statistics and operations research, are two co-authors of

an article describing the development of a new data-mining tool to improve researchers' understanding of cancer genetics. The work was published in the July 8 *Proceedings of the National Academy of Sciences (PNAS)*.

**Nabarun Dasgupta, PhD**, 2013 EPID alumnus, proposed a new definition of “overdose death” to garner more accurate estimates of death by illicit drugs and by prescription medicines that lend themselves to abuse. The research, published June 6 in the *Journal of Clinical Toxicology*, has implications for evaluating effectiveness of national measures to reduce overdose deaths.

**Nora Franceschini, MD, MPH**, EPID research assistant professor, led research that identified genes linked to high blood pressure in individuals of



John Anderson



Ralph Baric



Noel Brewer



Alan Brookhart



Guanhua Chen



Nab Dasgupta



Nora Franceschini



Meredith Fry



Jen Horney



Zachary Kerr



Michael Kosorok



Joseph Lee

### KEY TO DEPARTMENTS

<b>BIOS</b>	Biostatistics
<b>EPI</b>	Epidemiology
<b>ESE</b>	Environmental Sciences and Engineering
<b>HB</b>	Health Behavior
<b>HPM</b>	Health Policy and Management
<b>MCH</b>	Maternal and Child Health
<b>NUTR</b>	Nutrition
<b>PHLP</b>	Public Health Leadership





Elizabeth Mayer-Davis



Mehul Patel



Tamar Ringel-Kulka



Jason West



Steve Wing



Karin Yeatts



Donglin Zeng

African ancestry. The study was published online Aug. 22 in *The American Journal of Human Genetics*.

**Jennifer Horney, PhD**, research assistant professor of EPID and manager of the research and evaluation unit at the School's N.C. Institute for Public Health, found that experience in applied public health may influence job choices for public health graduates. Study findings were published online Aug. 16 in the *Journal of Community Health*.

**Zachary Kerr**, EPID doctoral student, found that most high school football programs still do not employ the most effective measures to manage heat-stroke. His study was published online Sept. 6 in the *American Journal of Sports Medicine*.

**Joseph Lee, MPH**, HB doctoral student, examined lesbian, gay, bisexual and transgender (LGBT) blogs and found the blogs rarely addressed one of the LGBT community's biggest health problems – smoking. Findings were published online Sept. 17 in *LGBT Health*.

**Danyu Lin, PhD**, Dennis Gillings Distinguished Professor, **Donglin Zeng, PhD**, professor, and **Zhengzheng Tang**, doctoral student, all in BIOS,

developed a novel approach to analyze genetic traits in large cohorts. Their approach was published online July 11 in the *Proceedings of the National Academy of Sciences* (PNAS).

**Philip May, PhD**, research professor of NUTR at UNC's Nutrition Research Institute, in Kannapolis, N.C., published two studies about fetal alcohol spectrum disorders in South Africa. The studies appeared in the May issue of *Alcoholism: Clinical and Experimental Research* and the June issue of *Journal of Developmental and Behavioral Pediatrics*.

**Mehul Patel, MSPH**, EPID doctoral student, surveyed North Carolina's emergency medical services (EMS) systems to determine how well they complied with stroke training and care practices. His findings – which noted significant improvements – were published online Sept. 5 in *Preventing Chronic Disease*.

**Tamar Ringel-Kulka, MD, MPH**, research assistant professor of MCH, led a study to analyze gut bacteria of children in N.C. Published online May 23 in *PLOS One*, the study found that the period of opportunity for treating children's microbial imbalances might be longer than previously thought.

## Dangers of air pollution

**Jason West, PhD**, assistant professor, and **Raquel Silva** and **Yuqiang Zhang**, doctoral students, all in ESE, used computer models to estimate that more than 2M deaths result each year from human-caused increases in fine particulate matter, making outdoor air pollution a major environmental health risk. The study was published online July 12 in *Environmental Research Letters*. In a similar model study, published online Sept. 22 in *Nature Climate Change*, West compared a future with and without global climate change policies and found that policies to reduce greenhouse gas emissions would decrease premature deaths from air pollution.

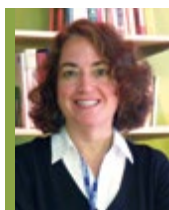
**Meridith Fry, PhD**, recent ESE alumna, co-authored another study with West, published May 29 in *Atmospheric Chemistry and Physics*, that found curtailing emissions of carbon monoxide can improve air quality and contribute to the reduction of greenhouse gases.



Danyu Lin



Philip May



Dorothy Cilenti



Myron Cohen



Kari North



Kurt Ribisl



Stephanie Wheeler

**Steve Wing, PhD**, EPID associate professor, **Jill Stewart, PhD**, assistant professor of ESE, doctoral students **Jessica Rinsky** and **Maya Nadimpalli**, and alumnus **Christopher D. Heaney, PhD**, now at Johns Hopkins, found drug-resistant bacteria associated with livestock in the noses of industrial livestock workers – but not in the noses of antibiotic-free livestock workers – in North Carolina. The study was published online July 2 in *PLOS One*.

**Karin Yeatts, PhD**, EPID research assistant professor, led a study to analyze incidence and burden of COPD-related emergency department visits in N.C. Her findings were published April 11 in the journal *CHEST*. With Gillings colleagues **Amy Her-ring, ScD**, BIOS professor, and **Eric Whitsel, MD, MPH**, EPID research associate professor, Yeatts also led a study that found a link between chemical air pollutants and cardiovascular disease, published online March 5 in

*Environmental Health Perspectives*. A study published in the August issue of *Science of the Total Environment* finds that the use of incense in the Arabian Gulf Peninsula may cause inflammatory response in the cells of people exposed to its smoke and gaseous combustion products.

**Rebecca Cohen**, master's student in ESE, her adviser **Kenneth Sexton, PhD**, now retired ESE research assistant professor, and Yeatts were co-authors.

## Selected Grants

**Ralph Baric, PhD**, EPID professor, and colleagues at the University of Wisconsin have received a \$10M+ grant to study the pathogenic activity of viruses including severe acute respiratory syndrome (SARS), Middle East respiratory syndrome (MERS), Ebola, highly pathogenic influenza and herpesvirus HHV8.

**Frieda Behets, PhD**, EPID professor, and **Stuart Rennie, PhD**, adjunct assistant professor of HPM, received the Fogarty International Center's International Research Ethics Education and Curriculum Development Award of more than \$1.3M to raise awareness and promote skills related

to bioethical issues in the Democratic Republic of Congo.

**Dorothy Cilenti, DrPH**, MCH clinical assistant professor and senior investigator at the NCIPH, received a \$5.5M award from the U.S. Health Resources and Services Administration to establish a national MCH Workforce Development Center at UNC. The award will provide workforce development for program leaders and prepare them to succeed in the public health system under the Affordable Care Act.

**Myron Cohen, MD**, Yeagan-Bate Eminent Distinguished Professor of Medicine, Microbiology and

Immunology, and Epidemiology, received a grant from the National Institutes of Health's Fogarty International Center to train medical personnel in southern China to prevent and treat sexually transmitted diseases, including hepatitis B and C. The award is one of six new Fogarty grants totaling \$5.6M.

**Joanne Jordan, MD, MPH**, adjunct EPID professor and director of UNC's Thurston Arthritis Research Center, was awarded a \$5.6M National Institutes of Health grant to address the public health challenges caused by osteoarthritis.

**Elizabeth Mayer-Davis, PhD**, NUTR professor and interim chair, was awarded \$7M by the NIH's National Institute of Diabetes and Digestive and Kidney Diseases to test effectiveness of her Flexible Lifestyles (FL3X) program to help adolescents with Type 1 diabetes manage their disease and improve quality of life.

**MEASURE Evaluation**, a consortium led by UNC's Carolina Population Center, was awarded \$15M from the U.S. Agency for International Development for HIV health information systems efforts in South Africa. The consortium is directed by **James Thomas, PhD**, associate professor of EPID.

**Kari North, PhD**, associate professor of EPID, received a \$3.1M National Institutes of Health grant to uncover connections between genetic variants and some of the complex diseases that affect Hispanics and African-Americans.

**Stephanie Wheeler, PhD**, assistant professor of HPM, will receive \$727K through an American Cancer Society Mentored Research Scholar Grant. Wheeler aims to improve use of guideline-recommended endocrine therapy among racially diverse breast cancer patients and shed light on reasons for disparities in outcomes.

**Kurt Ribisl, PhD**, HB professor, directs the new UNC Center for Regulatory Research on Tobacco Communication (CRRTC), one of 14 new national centers funded by the U.S. FDA and NIH. The CRRTC was awarded \$20M to conduct research on tobacco prevention communication and regulation. Based in UNC Lineberger Comprehensive Cancer Center (LCCC), the new center houses projects by UNC faculty members including **Noel Brewer, PhD**, associate professor of HB. Ribisl and Brewer are members of the LCCC.

## Other News

**The Gillings School class of 2013**, under student government president **Katlyn Donohue**, raised more than \$10K, including a \$3K contribution from the School's Alumni Association, for scholarships. Awardees included **Reuben Adatorwovor** (BIOS), **Lakshmi Gopalakrishnan** (MCH), **Jasmine Hutchinson** (HPM), **Eli Lovell** (NUTR), **Zinaida Mahmutfendic** (PHLP), **Alycia Overbo** (ESE),

**Shabbar Ranapurwala** (EPID) and **Kathryn Stein** (HB).

Experts at the **19th annual National Health Equity Research Webcast** on June 4 emphasized the role of comprehensive early childhood education programs in combating the effects of poverty. A webcast of the event is available at [www.minority.unc.edu/institute/2013](http://www.minority.unc.edu/institute/2013).

**Barry Popkin, PhD**, W.R. Kenan Jr. Distinguished Professor of NUTR, led The Bellagio Declaration ([BellagioObesity2013.org](http://BellagioObesity2013.org)), a call to action made at the International Congress on Nutrition in Spain in September. The declaration calls upon governments and other groups to take specific actions to counteract lobbying forces by multinational food corporations.

## *in* MEMORIAM

**Edward Michael Foster, PhD**, professor of health care organization and policy at University of Alabama-Birmingham's School of Public Health, and former professor at the Gillings School, died on May 14.

**Mary Reid**, program coordinator for PHLP's Health Care and Prevention concentration, died June 30.

As we went to press, we learned of the Nov. 5 passing of **Robert Moorhead, MPA**, who served in leadership roles at the School from 1967 until the 1990s. Through his efforts, faculty and staff members were provided for the first time in 1982 with computers and email services.

Read more at [sph.unc.edu/news](http://sph.unc.edu/news).



# May–October 2013 AWARDS & RECOGNITIONS

READ MORE AT [www.sph.unc.edu/recognitions\\_and\\_awards](http://www.sph.unc.edu/recognitions_and_awards).

**Sandra Cianciolo, MPH**, won the 2013 Innovation + Inspiration Staff Award, sponsored by the School's Research and Innovation Solutions office. Cianciolo is project coordinator for the National Training Institute for Child Care Consultants, a project led by Jonathan Kotch, MD, Carol Remmer Angle Distinguished Professor of MCH.

**Penny Gordon-Larsen, PhD**, NUTR professor, was elected vice-president of The Obesity Society, the leading scientific organization dedicated to the study of obesity. Her four-year position will include leadership as president-elect, president and immediate past president.

**Martin Kohlmeier, MD, PhD**, NUTR research professor, received the 2013 Roland L. Weinsier Award for Excellence in Medical/Dental Nutrition Education from the American Society of Nutrition.

**Miriam Labbok, MD, MPH**, Professor of the Practice of MCH, received the Carl E. Taylor Lifetime Achievement Award from the APHA's International Health Section on Nov. 5.

**Ya-Ru Li (ESE)** and **Carmen Piernas Sanchez, PhD (NUTR)**, won the 2013 Gillings Dissertation Award, a \$5K prize to support their research and dissertation writing. The awards are managed by the School's Research and Innovation Solutions office. (See *sph.unc.edu/accelerate*.)

**Jane Monaco, DrPH**, BIOS clinical assistant professor, and **Morris Weinberger, PhD**, Vergil N. Slee Distinguished Professor of Healthcare Quality and Management in HPM,

were presented at the spring 2013 commencement with the School's highest awards for teaching and mentoring – the McGavran Award for Excellence in Teaching (Monaco) and the John E. Larsh Award for Mentorship (Weinberger).

**George Pink, PhD**, Humana Distinguished Professor of HPM, was honored by the National Rural Health Association with its Outstanding Researcher Award in May.

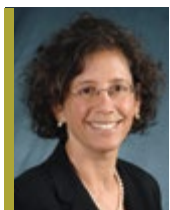
**Barbara K. Rimer, DrPH**, dean and Alumni Distinguished Professor of HB, was presented with the American Cancer Society's Medal of Honor in May. The award recognized Rimer's seminal cancer

#### KEY TO DEPARTMENTS

BIOS	Biostatistics
EPI	Epidemiology
ESE	Environmental Sciences and Engineering
HB	Health Behavior
HPM	Health Policy and Management
MCH	Maternal and Child Health
NUTR	Nutrition
PHLP	Public Health Leadership



Drs. Morris Weinberger (left) and Jane Monaco received the Larsh, McGavran awards.



Penny Gordon-Larsen



Martin Kohlmeier



George Pink



Ivan Rusyn



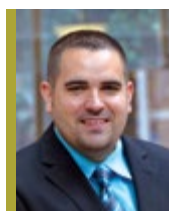
Ernest Schoenfeld



Anna Maria Siega-Riz



Philip Singer



Jason Surratt

research efforts, particularly in breast cancer screening. The UNC Lineberger Comprehensive Cancer Center also honored Rimer at a gala on Sept. 27 for her significant contributions to cancer research.

**Ivan Rusyn, MD, PhD**, ESE professor, was named to the National Research Council committee, “Design and Evaluation of Safer Chemical Substitutions – A Framework to Inform Government and Industry Decisions.” The Council is under the auspices of the National Academies ([nationalacademies.org](http://nationalacademies.org)).



PHOTO: COURTESY OF AMERICAN CANCER SOCIETY

Dean Rimer (second from right) accepts the ACS Medal of Honor.

**Ernest Schoenfeld, DrPH**, longtime leader at the School and lecturer in PHLP, received the Association of Public Health Laboratories’ Presidential Award in June. The award recognizes achievements in laboratory science and creative approaches to solving public health challenges.

**Anna Maria Siega-Riz, PhD**, was one of 15 nationally recognized experts selected to serve on the 2015 Dietary Guidelines Advisory Committee. Siega-Riz, professor of EPID and NUTR, will make recommendations for the eighth edition of the *Dietary Guidelines for Americans*, a document that will be the foundation for national nutrition programs, standards and education.

**Philip C. Singer, PhD**, ESE emeritus professor, won the Association of Environmental Engineering and Science Professors’ (AEESP) 2013 Charles R. O’Melia Distinguished Educator Award.



**\$20 MILLION**

Awarded by the NIH-FDA to Dr. Kurt Ribisl to create a UNC Center for Regulatory Research on Tobacco Communications

**Jason Surratt, PhD**, ESE assistant professor, won the prestigious Sheldon K. Friedlander Award from the American Association for Aerosol Research for dissertation research showing how natural emissions from trees help increase fine particulate matter, thereby affecting air quality and human health.

**Myron Cohen, MD**, Yeargan-Bate Eminent Distinguished Professor of Medicine, Microbiology and Immunology, and Epidemiology, received the North Carolina Award for Science, the state’s highest civilian honor.

# STUDENT INTERNSHIPS



Each summer, our students seek internships and field practica that take them to communities across North Carolina. They provide public health services, conduct research and educate people about public health issues. In return, they receive training, practical experience and a wider appreciation for the people, places and public health challenges in North Carolina.

Enjoy these snapshots! They describe only a few of our students' North Carolina projects.

COMPILED BY DAVID PESCI





Left to right are Krista Perreira, PhD, professor of public policy and adjunct professor in the Gillings School, de Rosset and Arandia.

**GABRIELA ARANDIA**  
HEALTH BEHAVIOR DOCTORAL STUDENT

**LESLIE DEROSSET**  
MATERNAL AND CHILD HEALTH  
DOCTORAL STUDENT

Arandia and deRosset studied the effectiveness of educational outreach to immigrants about the Affordable Care Act. Team members conducted interviews with government officials, health and human service providers, community leaders and immigrants. They learned what worried people about the law and examined strategies that might make enrolling for coverage easier. A report on their findings will be available in 2014 on the Carolina Population Center's website ([www.unc.edu/cpc](http://www.unc.edu/cpc)).



PHOTOS BY LINDA KASTLEMAN



**PHIL HANSEN**  
HEALTH BEHAVIOR MASTER'S STUDENT

Hansen did research and disseminated health information in beauty and barber shops, introducing underserved communities to information about cancer screening and other health issues. He and others traveled to numerous beauty shops in the state, including Donna's Hair Salon, in Sanford, N.C., to conduct fall-prevention workshops. He interviewed women about lifestyle habits, checking blood pressure and testing strength and balance, "I learned a lot today," one of Donna's customers said. "I appreciate that you came and gave us this free health information."



Hansen (above, left) worked with beauty salon customers to prevent falls.





Abel (left) and Bellamy conducted a food preparation workshop in Garner, N.C.

**KATE ABEL**  
NUTRITION MASTER'S STUDENT

**KELLY BELLAMY**  
NUTRITION MASTER'S STUDENT

Abel and Bellamy conducted a program in Garner, N.C., that taught low-income residents how to grow their own food and cook it. These "Garden to Table" programs have been extremely popular and successful statewide.

### ONLINE *Extras*

A report on Arandia's and de Rosset's research on immigration and health care will be posted in early 2014 at:  
[unc.edu/cpc](http://unc.edu/cpc).



**AMA ACHAMPONG**  
HEALTH POLICY AND MANAGEMENT  
MASTER'S STUDENT

Achampong spent her summer at the Veterans Affairs Medical Center in Fayetteville, N.C. She developed a comprehensive tool to track nursing performance measures, such as patient falls, pressure ulcers and restraint utilization; assessed quality and process improvement projects for inpatient mental health services; and worked with the hospital's associate director to analyze the staffing model of a specialty service.



**ROBERT COBLE**  
HEALTH POLICY AND MANAGEMENT  
MASTER'S STUDENT



Coble focused on the expansion of the Women's Services department at Novant Health Medical Center in Matthews, N.C. Two of his tasks were to identify optimal operational design for patient flow and room assignment in the medical center and coordinate a parking plan for increased volume due to expanded women's services and an additional floor being added to the center.



PHOTO BY DAVID PESCI

Coble (left) reviews blueprints with Chris Hutter, Novant Health's senior director of operations.



PHOTO BY LINDA KASTLEMAN

**ANTHONY NWOSU**  
HEALTH POLICY AND MANAGEMENT  
MASTER'S STUDENT



Nwosu worked with the Carolina Population Center's MEASURE Evaluation program to update health indices information for about 40 countries. He learned the importance of monitoring, evaluation and use of data and examined what governments are doing to curtail the spread of HIV/AIDS, reduce stigmatization and institute preventive measures, preparation that will serve him well in a global health career. This information could be used in N.C.



PHOTO BY DAVID PESCI



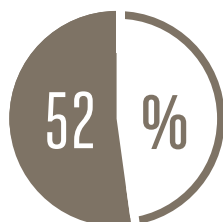


Liz Chen (second from right) with UNC seniors (l-r) Joey Weissburg, TJ Tkacik and John Haskell.

## ELIZABETH CHEN

### HEALTH BEHAVIOR MASTER'S STUDENT

Chen (in black) partnered with a colleague at another school to develop "MyHealthEd," an online, tailored sex education curriculum that increases sexual health knowledge and decreases risky sexual behaviors among middle- and high-school students in rural North Carolina. She also will introduce the program as a pilot during spring 2014 at Teach For America's partner high schools in eastern North Carolina.



**52% OF GRADUATING DOCTORAL STUDENTS**

who originally came as non-resident students remain in North Carolina.



## MEGAN SQUIRES

### MATERNAL AND CHILD HEALTH MASTER'S STUDENT

Squires interned at the Planned Parenthood Action Fund of Central North Carolina in Raleigh, but her efforts benefited all of North Carolina. She used Stata, a software program, to analyze patient satisfaction surveys, coordinating with program partners, including Blueprint and America Votes, to raise awareness about various women's health issues. She also worked on a program to include more men in maternal and child health efforts statewide.



Megan Squires raised awareness about women's health issues this summer.

### ONLINE *Extras*

Interested in learning more about **MyHealthEd** (featured above) and how it could impact your city?

[microryza.com/PROJECTS/MYHEALTHED](http://microryza.com/PROJECTS/MYHEALTHED)

A MESSAGE FROM OUR

## Associate Dean for Research

SANDRA L. MARTIN, PHD

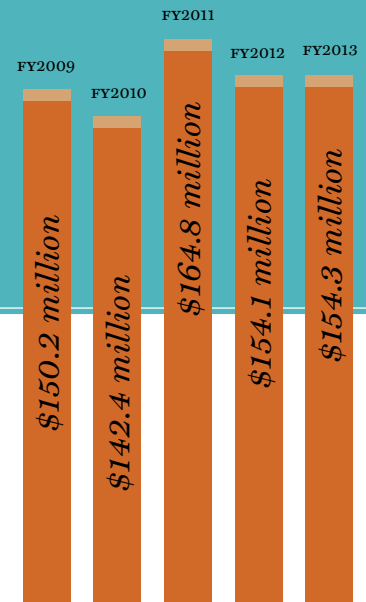


Those of us at the Gillings School of Global Public Health are proud to call North Carolina home. Our faculty, staff members and students conduct meaningful research in our state and around the world. This year, faculty members were awarded 414 grants and contracts totaling more than \$154.3 million. During the past year, 46 percent of these projects, totaling \$43 million, provided a community benefit to people who live in N.C. Moreover, the research provided an economic benefit to the state, as the grant and contract dollars were spent in every county and created another 5,500 jobs.

Examples of our research are described in this issue.

I'll share a few others with you here:

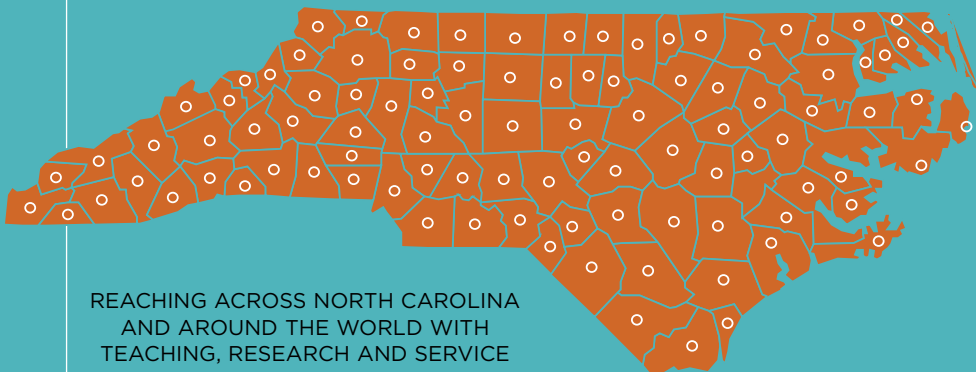
- **Jason Surratt, PhD**, ESE assistant professor, was funded by the U.S. EPA to study the unique role played by trees and vegetation in increasing air pollution in N.C. His work, which examines isoprene, a naturally occurring air pollutant, will shed light on the effects of our air on human health and may provide policy makers with data needed to inform important legislation. Surratt, recently honored with a prestigious AAAR award (see page 28), was featured in the spring 2013 issue of *Carolina Public Health* ([sph.unc.edu/cph](http://sph.unc.edu/cph)).



*Fiscal Year 2013*

# RESEARCH ANNUAL REPORT

All eight academic units at the School focus on solving N.C.'s pressing public health problems – preventing obesity, protecting drinking water, preparing for natural and human-caused disasters, and reducing disparities in health outcomes, among others. The map below identifies research taking place in each of our 100 counties. At [tinyurl.com/NC-map-RENCI](http://tinyurl.com/NC-map-RENCI), click on any county to see our projects there.



GILLINGS SCHOOL FACULTY MEMBERS WERE AWARDED \$154.3 MILLION FOR GRANTS AND CONTRACTS IN FISCAL YEAR 2013.

- The Robert Wood Johnson Foundation funded an interdisciplinary team to examine impact of the economic recession on N.C.'s local health departments, with particular attention to how financial cuts affect the health of North Carolinians. Early analyses reveal that, during the study period (2005 - 2008), there was great variation in counties' per-capita expenditures, with 15 percent of studied counties experiencing a decrease. Future analyses will determine associations between expenditure levels and the health of the community. Team members included **Anna Schenck, PhD**, the School's associate dean for practice and director of its Public Health Leadership Program and N.C. Institute

REACHING ACROSS NORTH CAROLINA  
AND AROUND THE WORLD WITH  
TEACHING, RESEARCH AND SERVICE

### Foundations

6.1% (\$9.5 MILLION)

*Educational & research institutions*  
5.2% (\$8.0 MILLION)

*Business & industry*  
4.5% (\$6.9 MILLION)

*Nonprofit organizations*  
2.4% (\$3.7 MILLION)

*State government*  
1.8% (\$2.8 MILLION)

*Other (associations, local government, sponsors)*  
1.4% (\$2.1 MILLION)

*Federal Government*  
78.6%  
(\$121.3 MILLION)

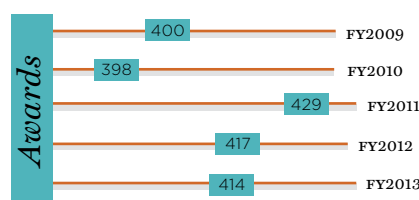
THE MAJORITY OF EXTERNAL FUNDING IN FY 2013 WAS FROM THE FEDERAL GOVERNMENT.

for Public Health (NCIPH); Anne-Marie Meyer, PhD, research assistant professor of epidemiology and facility director at UNC Lineberger Comprehensive Cancer Center's Integrated Cancer Information and Surveillance System (ICISS); **William Carpenter, PhD**, associate professor of health policy and management and ICISS faculty director; **Dorothy Cilenti, DrPH**, clinical assistant professor of maternal and child health and NCIPH senior investigator; and **Tzy-Mey (May) Kuo, PhD**, senior statistical analyst for ICISS. Additional information about this project is available at [sph.unc.edu/nciph\\_ROI\\_brief](http://sph.unc.edu/nciph_ROI_brief).

- **Kurt Ribisl, PhD**, professor, **James Bowling, PhD**, research associate professor, and **Heathe Luz Reyes, PhD**, research assistant professor, all in the Department

of Health Behavior, are working on a five-year study funded by the National Cancer Institute to evaluate impact of the 2009 federal Family Smoking Prevention and Tobacco Control Act. The law dramatically changes marketing and sale of tobacco products in N.C. and throughout the U.S. Extensive surveillance, training and analysis are needed to help state and local governments implement new federal regulation on tobacco control. Now, a companion study in England with collaborators from University of Cambridge will describe retail environments and monitor compliance with tobacco and alcohol control policies in the U.K.

- **Andy Olshan, PhD**, professor and chair of epidemiology, **Amy Herring, ScD**, professor of biostatistics, and **Arthur Aylsworth, MD**, professor and chief of the Division of Pediatrics, Genetics and Metabolism



PRINCIPAL INVESTIGATORS (PIs) AT THE SCHOOL WERE AWARDED 414 GRANTS & CONTRACTS DURING FY 2013 (an average 2.67 awards per PI).

in UNC's School of Medicine, were funded by the U.S. Centers for Disease Control and Prevention for work with the N.C. Center for Birth Defects Research and Prevention (NCCBDPR). NCCBDPR researchers aim to understand environmental and genetic causes of birth defects. Project personnel are interviewing mothers of 400 children in N.C. - 300 with birth defects and 100 without. They also are collecting genetic data from the parents and children to investigate occupational, environmental, lifestyle and genetic factors in birth defects etiology.

Our Gillings School researchers are devoted to improving the health of North Carolinians. Our reach is global, but we never forget our commitment and responsibility to neighbors right here at home.



An architectural rendering of a large, multi-story brick building with many windows. In the foreground, a group of people are walking on a sidewalk. A white rectangular box with a thin black border is centered over the image, containing text. A small brown bookmark icon is at the top of the box.

# OUR DONORS

*Celebrating  
the School's*

# 75

YEARS

OF

*Research,  
Teaching & Service*

Michael Hooker Research Center  
Architectural rendering by Anshen + Allen.

---

**\$1,000,000  
TO \$5,000,000**

Anonymous  
Conrad N. Hilton Foundation  
Robert Wood Johnson Foundation  
Wyeth Nutritionals Inc.

---

**\$500,000  
TO \$999,999**

Columbia University  
Eisai Research Institute  
GlaxoSmithKline Biologicals S.A.

---

**\$100,000  
TO \$249,999**

American Heart Association  
Mid-Atlantic  
American Institute for Cancer Research  
BlueCross BlueShield of N.C.  
Bristol-Myers Squibb Co. – Houston  
Camille & Henry Dreyfus Foundation  
Inc.  
Children's Hospital – Boston  
Duke University Medical Center  
Formacare  
Harvard University  
Johns Hopkins University

---

**\$50,000  
TO \$99,999**

Anonymous  
ASTHO  
Brown University  
CDC Foundation  
Dauer Family Foundation  
Duke University  
Electric Power Research Institute  
Henry M. Jackson Foundation  
Ronald & Janice Kimble  
Merck, Sharp & Dohme Research  
Laboratories Corp.  
Pfizer Foundation

## GILLINGS SCHOOL OF GLOBAL PUBLIC HEALTH

# HONOR ROLL

### of DONORS & PARTNERS

GlaxoSmithKline  
Metagenics Inc.  
Oregon Health & Sciences University  
John & Ginger Sall

---

**\$250,000  
TO \$499,999**

American Academy of Pediatrics  
Dana-Farber Cancer Institute  
Merck & Company  
N.C. Association of Local Health  
Directors

Mary Kay Foundation  
Michigan Public Health Institute  
North Carolina Biotechnology Center  
North Carolina State University  
Plan International USA  
Right to Care  
Sanofi  
*Estate of Vergil N. Slee*  
The COPD Foundation  
Tufts University  
University of Toledo  
University of Washington  
World Health Organization

Barry M. Popkin  
ProCleanse LLC  
RTI International  
Thomas R. Rykken  
Sloan-Kettering Institute  
Stanford University  
Tellus Educational Foundation Inc.  
Triangle Community Foundation  
Unilever U.K. Central Resources  
Limited  
University of Illinois at Chicago  
University of Maryland at Baltimore  
University of Minnesota  
WakeMed Health & Hospitals

CONTINUED ON PAGE 40





Clell, Paul and Jim Brendle

## FRED AND LAURA BROWN

Their endowed scholarship honors family while helping heroes

The Brendle brothers, born in Statesville, N.C., served their country proudly. During World War II, Clell was an Army staff sergeant, and Paul was a Navy chief petty officer. Jim, the youngest, was an Army sergeant during the Korean conflict.

Years later, their sister's son, Fred Brown, followed in their footsteps, first as an Army captain for three years, and then for three decades, as a colonel in the N.C. Air Guard/U.S. Air Force. He was on active duty for nine months during Operations Desert Shield and Desert Storm.

Now Brown, who earned a master's degree in public health administration from UNC's public health school in 1981, and his wife, Laura, have established the "Brendle Brothers Scholarship for Veterans."

"We've basically been at war for the past 20 years," Brown says. "Many veterans coming back want to pursue graduate degrees. Public health needs men and women who are dedicated and know how to get the job done. This seemed like a great way for us to honor my uncles and all veterans – and to give back to UNC."

The scholarship was announced at the School's first 75th anniversary event in Charlotte, N.C. The event was



“Many veterans coming back want to pursue graduate degrees... The scholarship seemed like a great way for us to honor my uncles and all veterans – and to give back to UNC.”

—FRED BROWN



Fred and Laura Brown

sponsored by Carolinas HealthCare System, where Brown is group senior vice president.

Brown is devoted to Carolina, especially to the Gillings School of Global Public Health. He is an adjunct health policy and management faculty member and frequent guest lecturer. He has served as president of the School's Public Health Foundation board and on numerous alumni committees. Currently, he chairs the 75th anniversary campaign.

Other alumni also are supporting the celebrations, which will be held in various locations over the next three years. Among them are Roy Ramthun, MSPH (HPM, '87), who chairs the Public Health Foundation's campaign cabinet (planning committee), and Deniese Chaney, MPH (HPM, '90), who chairs the anniversary programs committee. (See more about Chaney on page 42.)

Learn more about the School's anniversary events on the inside back cover of this issue and at [www.sph.unc.edu/alumni/75](http://www.sph.unc.edu/alumni/75).

—Ramona DuBose

HONOR ROLL, CONTINUED  
\$50,000 TO \$99,999

Washington University – St. Louis  
Water Resources Research Institute  
Wells Fargo Bank N.A.

\$25,000  
TO \$49,999

Anonymous (4)  
Abbott Laboratories  
Access Business Group LLC  
Marcia Angle & Mark Trustin  
BioDeptronix LLC  
Deniese May Chaney  
Fred Hutchinson Cancer Research  
Center  
Hydro Research Foundation  
Gary G. & Carolyn J. Koch  
Mathile Institute  
Ralph & Diane Medcalf  
Morgan Stanley Smith Barney Global  
Impact  
Mount Sinai School of Medicine  
Oregon Research Institute  
Otsuka Maryland Medicinal Lab Inc.  
P&G Children's Safe Drinking Water  
Program  
Pfizer Inc.  
John Rex Endowment  
Mark D. Sobsey  
William & Dorothy Swartz  
UCB BioSciences Inc.  
UNICEF  
University of California at Davis  
University of Cape Town  
University of Rochester  
University of Texas at Austin  
Wake Forest University

\$10,000  
TO \$24,999

Anonymous  
Sheryl Wallin Abrahams &  
Steven Abrahams  
Academic Pediatric Association  
Albemarle Regional Health Services  
Albert Einstein College of Medicine  
Astellas Pharma U.S. Inc.  
David J. Ballard & Michela Caruso  
Blue Cross & Blue Shield of Minnesota  
Brigham & Women's Hospital  
Celgene Corporation  
Cempra Pharmaceuticals Inc.  
Children's Hospital of Philadelphia  
Crim Fitness Foundation  
CVR Global Inc.  
Cytokinetics Inc.  
Depomed Inc.  
Nancy Ann Dreyer  
Geraldine G. Guess  
Ferring Pharmaceuticals  
Galderma Research and  
Development Inc.  
Bill & Melinda Gates Foundation  
Georgia Health Sciences University  
Gilead Sciences Inc.  
Carla Hand  
IRC International Water &  
Sanitation Centre  
Johns Hopkins University  
Jill & Michael Edwin Kafrissen  
Krell Institute  
Maylon & Linda West Little  
Mark Hamilton Merrill &  
Terese S. Merrill  
Medivation Inc.  
Momentum Research  
Mylan Inc.  
James Edward Nix  
Nestle Infant Nutrition  
Novartis Pharmaceuticals Corp. – HQ

Onyx Pharmaceuticals Inc.  
Douglas Martin Owen  
Pharmacyclics Inc.  
Rempex Pharmaceuticals Inc.  
Barbara K. Rimer & Bernard Glassman  
Christopher Lee &  
Sharon Snider Ringwalt  
Sanofi  
Schering-Plough Research Institute  
Sigma-Tau Pharmaceuticals Inc.  
Celette Sugg Skinner  
Sobi  
Sprout Pharmaceuticals Inc.  
STE Health International LLC  
Theravance Inc.  
Mary S. Thompson Trust  
ThromboGenics Ltd.  
Transtech Pharma Inc.  
United Therapeutics Corporation  
University of California at San  
Francisco  
University of South Carolina  
Vanda Pharmaceuticals Inc.  
Robert Donald Verhalen  
WaterAid  
XenoPort Inc.  
Chen-yu Yen & Ray-Whay Yen

\$5,000  
TO \$9,999

Aramar Inc.  
H. Michael & Barbara Arrighi  
Delton Atkinson & Sherry  
Holbrook-Atkinson  
Eunice M. Brock  
Edward Carroll Bryant  
Susan Ford Dorsey  
Howard J. Dunn  
FHI360  
Forest Research Institute  
Joan Heckler Gillings  
Sandra Bartholomew Greene

Donald A. & Jennifer Holzworth  
*Estates of* Maurice A. Hylbert &  
 Johnnie Lea Hylbert  
 Jonathan Bruce & Anne Madeline  
 Kotch  
 CL Lassiter  
 John P. McConnell  
 Stephen Allen Morse  
 Clarence Edward Pearson &  
 Laurie B. Norris  
 Hataya Petcharoen  
 Aluisio DeSouza Pinheiro  
 David Edward Pinsky  
 Research Institute Nationwide  
 Children's Hospital  
 Richmond County Health Department  
 Salix Pharmaceuticals, Inc.  
 Sand Hill Foundation  
 Schaeffer Revocable Family Trust  
 Leonard D. Schaeffer  
 William A. & Michele A. Sollecito  
 UNC Student Activities Fund Office  
 Susanne Glen Moulton &  
 Thomas K. Wong  
 Gail Young

---

**\$2,500**  
**TO \$4,999**

Michael D. Aitken and Betsy Rudolph  
 Amway Corp.  
 Deborah Elizabeth Bender  
 Antonio S. and Mary Fox Braithwaite  
 Catholic Relief Services  
 Cedars-Sinai Medical Center  
 Denise Smith Cline  
 Kenneth LeRoy Eudy Jr.  
 Gerardo Heiss  
 Miriam Labbok  
 Erma Wright Manoncourt  
 Dara Lee Murphy  
 NSF International  
 OMG Center for Collaborative

Learning  
 Jean G. Orelie  
 Julie & David Potenziani  
 Jonathan C. Reeser  
 Steven R. Reeser  
 Brian O'Rourke &  
 Linda Martin Sanders  
 Schwab Fund for Charitable Giving  
 SciMetrika  
 Anna Maria Siega-Riz  
 Ilene C. Siegler & Charles D. Edelman  
 William Thomas Small Jr.  
 Susan Willey Spalt  
 Strata Solar LLC  
 David Stanton Strogatz & Rosalind  
 Patricia Thomas  
 Lydia Lansangan Tiosejo  
*In honor of Dr. Norman F.*  
*Weatherly*  
 Tomlinson Industries  
 William J. Tyroler & Barbara Ingram  
 University of North Carolina Hospitals  
 University of Wisconsin at Milwaukee  
 Jack Eugene Wilson

---

**\$1,000**  
**TO \$2,499**

Anonymous (2)  
 300in6  
 John & Hattie Aderholdt  
 Omid & Julie Cashman Ahdieh  
 American Chemical Society  
 American Legacy Foundation  
 Alice Sue Ammerman & Thomas  
 Charles Keyserling  
 Kathleen D. Anderson  
*Estate of* Olga Helen Anderson  
 Arcadis  
 Association of N.C. Boards of Health  
 Susan Sherer Atkinson  
 Stephen Charles Ayala  
 Barbara Anne Barr

Sterling Wilson Bell  
 Peggy Bentley  
 Blue Cross Blue Shield of  
 North Carolina  
 Michael N. Boyd  
*In honor of Craig Turnbull*  
 Mark E. Brecher  
 Noel Brewer  
 British Counsel Collaborative  
 Development Award  
 Fred & Laura Brown  
 Jianwen Cai & Haibo Zhou  
 Grace Robinson Chan  
 Dennis Alfred Clements III &  
 Martha Ann Keels  
 Joanne C. & Ralph R. Cook  
*In memory of Dr. Al Tyroler*  
 David E. Cooper  
 Alan L. Copland  
 Barbara & Paul Coughlin  
 Michael J. Cucchiara & Marty Hayes  
 Gordon Lacy Daughtry  
*In memory of Mrs. Margaret Smith*  
*Daughtry*  
 Charles H. Davis Jr. &  
 Kourtney Johnston Davis  
 Richard M. Davis &  
 Elizabeth Mayer-Davis  
 James Ingram & Alice Morrow Dean  
 Georgia G. dela Cruz  
 Leah McCall Devlin  
*In honor of Barbara Rimer*  
 David Louis Dodson  
 Duke Corporate Accounts Payable  
 Jo Anne & Shelley Earp  
 Susan Tompkins Ennett &  
 Wayne Edward Pein  
 MaryAnn C. Farthing  
 Fidelity Charitable Gift Fund  
 Edwin B. Fisher  
 Robert Hillman &  
 Suzanne Wright Fletcher  
 David Steven Freedman



## DENIESE CHANEY

### Providing students with a great place to collaborate

Deniese Chaney, MPH, is one of the many Gillings School alumni who steps forward whenever she's needed.

A principal in Accenture's Health and Public Service Operating Group ([www.accenture.com](http://www.accenture.com)), Chaney serves on the School's Public Health Foundation board and is program committee chair for the School's 75th anniversary campaign.

Several years ago, she endowed a fellowship that continues to support outstanding scholars in the Department of Health Policy and Management.

"I feel strongly about using personal giving to provide our students with opportunities to finish school debt-free," Chaney says. "I'm committed to improving access to funds to help defray the cost of their education at UNC Gillings School of Global Public Health."

Chaney's most recent gift supported the installation of a "collaboration commons" at the School. The bright, comfortable, technology-equipped space, set by a wall of windows, is a perfect place in all seasons to study alone or discuss projects with colleagues.

"I love the idea of enhancing collaboration and networking in any form among students, faculty members and visitors," she says. "This study area is in close proximity to one of the School's (and UNC's) most updated and adaptable classrooms [2308 McGavran-Greenberg Hall]. The area's open space is a complement to the classroom and provides a venue for small-group preparation, presentation rehearsal,



PHOTOS BY LINDA KASTLEMAN



Deniese Chaney dropped by the Collaboration Commons in McGavran-Greenberg Hall recently, where she chatted with epidemiology doctoral students Nicholas Taylor (left) and Peter Samai. The men expressed appreciation for the comfortable work space established through Chaney's gift to the School.

brainstorming and just having fun conversations that often open the door to new discoveries about a project."

Students began visiting the space as soon as it opened and continue to find new ways to use it.

"It's been a real pleasure to know that our public health students started using and enjoying the space immediately and that it has the potential to improve their educational experience," Chaney says.

—Linda Kastleman

Markus Friedbert &  
Cathy Julie Wilhelm  
Stuart & Karen Gansky  
*In honor of Dr. Gary Koch*  
Peggy & Cam Glenn  
*In memory of Susanne Lynas  
Moulton*  
Thomas Ladd Goolsby  
Priscilla Alden Guild  
*In memory of Marjorie Downs  
Guild*  
Leslie & Philip Gura  
Richard Hammel  
Rosanne Buckley Hanratty  
David K. & Karen Robbins Harper  
Sharon Nicholson Harrell  
Paula Billingsley Harrison  
Health Career Connection  
James R. Hendricks  
W. Scott Hilles  
Deborah Parham Hopson  
Sallie Craig Huber  
Joan C. Huntley  
Joseph G. Ibrahim  
Mary Ellen James  
Jefferson University  
Carl R. Johnson  
Thomas V. Jones  
James D. & Virginia Midgett Kinard

Charles Wayne Kinsey  
Emil J. Klingenfus  
Pamela & Michael Kosorok  
Sandy Martin & Larry Kupper  
Donald & Marie Lauria  
Margaret Edith Layne  
Sheila Leatherman  
Clara Lee & Bill Miller  
Richard Lee & Brenda Tie Wing  
Hong Li  
Danyu Lin  
Douglas S. Lloyd  
Harry Leon Lobsenz Foundation  
Molly E. Loomis  
Leslie Lytle  
Julie MacMillan  
Regina Fleming Magit  
Robert Martin  
Jesse Milan Jr.  
The Minneapolis Foundation  
Mona Marie Moon  
*In memory of Eve Carson*  
Alan C. Moore  
F. Paul Morrow  
Sarah Taylor Morrow  
Thomas L. & Susan C. Morrow  
Mary Anne Murray  
Jeanenne Little Nelson  
Charlotte Newsom Nunez-Wolff  
Jeffrey John Oberhaus &

Brent Wishart  
James P. O'Connell  
Andrew Olshan & Linda Levitch  
William Kevin O'Neil  
Leonard Oppenheimer  
Edith Ann Parker  
Lynne Morrow Perrin  
Herbert Bryson Peterson  
Rebecca Raymond  
Charles Edwin & Laura Helms Reece  
Rent Consulting Group LLC  
Michael Davis Rogers  
Jennifer & James Rosen



2012

Master of Public Health  
concentration in veterinary  
epidemiology was launched at  
Gillings School in collaboration  
with N.C. State University.

Jo Ann L. Roth  
R. Gary & Jeanette Rozier  
Patricia Saddier  
Jerry Salak  
James K. & Donna Schaefer  
Anna Pittman Schenck &  
James Simpson Schenck IV  
Victor Julian & Marion Eldredge  
Schoenbach  
*In memory of Robert Millikan*  
*In honor of Bill & Rosa Small*  
*In honor of Bill Jenkins & Diane  
Rowley*  
Mary & Ernie Schoenfeld  
Christopher Roman Schulz  
SENSUS  
Jacqueline Sergeant  
David Samuel Sheps &  
Mary People-Sheps  
Ruth A. Shults  
Gladys Siegel  
Charletta Georgette Sims Evans  
Frank & Melanie Spencer  
State Employee's Combined Campaign  
June Stevens  
Sarah L. Strunk  
Suez Environnement  
Sandra & James Swenberg  
T. Rowe Price Program for  
Charitable Giving

## GOALS OF 75<sup>th</sup> Anniversary Campaign

*Celebrate!*  
Events throughout the country

*Engage!*  
UNC Service Days  
Reunions

*Invest!*  
75 new scholarships  
7 new professorships  
7.5% increase in  
Annual Fund participation

[sph.unc.edu/alumni/75](http://sph.unc.edu/alumni/75)

Russell Barner Toal  
John C. Triplett  
Douglas Blair Tully  
Vestergaard Frandsen Inc.  
Robert E. Vollinger Jr.  
Alice D. White  
Catherine Avery Wood  
Wei-shi Yeh  
Thomas Robison & Diane Everts Yerg  
John Sterling Young Jr.

---

**\$500  
TO \$999**

Anonymous  
American Association of  
Diabetes Educators  
Amgen Foundation Matching Gifts  
Eileen Danielle Barrett  
Gordon Berry & Mary Hynes-Berry  
William Cudd Blackwelder  
J. Michael &  
Denise Christopher Bowling  
Michael Austin Boyd  
Douglas Donaldson Bradham  
Ted Broussard & John Wiesman  
Gail Rose Brown  
Camp Dresser & McKee  
Joseph D. & Jenifer Haas Carson  
J. Kenneth & Lynda Ann Conover  
Stephen P. Couch  
E. Stewart Crumpler  
Clarence E. Davis Jr.  
William Bruce Dowbiggin  
Charles Perry Dunbar  
Hannah Pollet Edens  
*In honor of Dr. Miriam Labbok*  
Brenda Kay Edwards

Harold F. Elkin  
Brian K. Ellerby  
George Roy Elmore Jr. &  
Mary Broadhead Elmore  
Shandal Shanee Emanuel  
Michele Robin Forman  
*In memory of Dr. Robert Millikan*  
Daniel Benjamin &  
Francesca Turchi Fried  
*In memory of Dr. Robert Millikan*  
Jerry Gray Gentry  
William Bryan Gentry  
David Allan Green  
Kerry Brent Hafner  
Suzanne Havala Hobbs  
Elizabeth Hodgson  
Carol Rowland Hogue  
*In honor of H. Michael Arrighi*  
Omar Snowden Hopkins &  
Teresa Marie Savarino  
Michael & Lori Hughes  
Jonathan V. James  
William H. Joyner Jr. &  
Mary Brenda Joyner  
Linda Marie Kaste  
Michelle Crozier Kegler  
Donna Gayle King  
Amy Lansky Knowlton  
Kenneth Joseph Koury  
Kenneth Scott Ladrach  
H. Martin & Alice Matheny Lancaster  
Julia Kraemer Lerche  
Karen Elizabeth Libby  
Catherine Rowland Liemohn  
Pamela Margo Marcus  
Stephen William Marshall &  
Anna Estelle Waller  
John McGuire  
David Nicholas & Gladys Hau McNelis  
Andy C. McNiece &  
Nancy Logan Haigwood  
John & Georgia Meyers  
Matthew Hamilton Meyers

Wilbur Kears &  
Virginia Graves Milhous  
Philip Keith Mitchell  
Hal Morgenstern  
Xumin Nie & Ming Zhong  
Raymond Joseph Nierstedt  
Timothy Wade Okabayashi  
Jane Smith Patterson  
John Edward & Jill Jackson Paul  
Franco Miguel Piazza &  
Regina Rabinovich  
Xiang Qin  
Maura Smith Rampolla  
Charles Eric Rodes  
Mark & Karen Rodin  
John & Kelley Russell  
Christopher J. & Laura Shellen Sandt  
Michael Gerard Schell  
Shanahan Law Group PLLC  
Kieran Joseph &  
Christina Alvarado Shanahan  
Steven Michael Snapinn  
Jeanne Stahl  
Rachel Humphries Stevens  
Tamaurus Jerome Sutton  
John Henry Sweitzer  
David Gordon & Jeanie Driver Taylor  
Raymond John Townsend &  
Jane Therese Osterhaus  
Vidant Health  
Dianne Stanton Ward  
Fredrick Seymore Whaley  
John Wiesman  
Richard Vance Wolfenden  
Grover Cleveland Wrenn Jr.  
Beverly Ann Young

---

**\$250  
TO \$499**

Barbara Vineyard Alexander  
David O. Amuda & Michol Dawson





Linda West Little, collecting water samples in the 1980s

# LINDA WEST LITTLE

## Breaking gender barriers, paving the way for student success

Linda West Little is no stranger to barricades – or scrambling over them. The first woman to receive a doctorate (in 1968) from the Gillings School's Department of Environmental Sciences and Engineering (ESE), she became the department's first woman faculty member in 1970.

In the decade following, she conducted industrial waste research at UNC-Chapel Hill and the Research Triangle Institute and served as administrative judge with the U.S. Nuclear Regulatory Commission's Atomic Safety and Licensing Board. Little was one of three judges who conducted hearings on the restart of Three Mile Island Unit 1 after the catastrophic accident at Unit II in 1979.

In 1983, she was named executive director of the N.C. Governor's Waste Management Board, established to develop facilities for handling low-level radioactive and other hazardous wastes produced by industry, medicine, utilities and other sources. In 1990, she acquired additional responsibilities as the first director of the N.C. Office of Environmental Education.

While she taught at UNC's public health school, Little advocated for her students to attend conferences, present papers and conduct field research.

"A student needs to be introduced to the real world, not just be confined to classrooms and laboratories," she says. "Complex environmental problems may have simple answers – but they're usually simple *wrong* answers. When students meet environmental professionals at conferences and in field settings, not only can they network about career opportunities, but they can test their own ideas against other scientists', thereby improving the quality of their thought and their research."

Finding the money to defray student expenses for travel was difficult, though. "Research grants and contracts provided little or no support," she says, "and I suspect the situation is even worse now."

That lack of funding inspired the establishment of The Linda West Little Research Endowment in Waste Management.



Dr. Little, today

CONTINUED ON PAGE 46

Income paid from the fund will be used to support ESE graduate students learning about scientific waste management, particularly for student travel or field research support.

At the start of her career, Little was especially inspired by the teaching and research of ESE faculty member Dr. James C. Lamb III and by encouragement from Lamb and Dr. Charles Weiss. "Without their support, I wouldn't have been admitted to the program, nor would I have had the success I've had," she says.

Now other ESE students may pay similar tribute to Little, for her interest in their success.

—Linda Kastleman

## GIVING

The future of North Carolina's public health school depends upon gifts made by you - today's alumni and friends - to benefit the public health heroes of tomorrow. For more information, contact the School's Office of External Affairs at 919.966.0198, or visit [giving.unc.edu/gift/sph](http://giving.unc.edu/gift/sph).

John Mayberry Anton &  
Renee Helene Schwalberg  
Nikita Arya

Carolann Dineen Augustine  
Patricia Michel Backus  
Thomas Jason Bacon  
Edmund Gerald Barron  
Sheri Ruth Bates

Douglas Alan Bell  
Lynn W. Blanchard  
Treavor Hall Boyer

Janet H. Bozzone  
Christine M. Branche

Jay Thomas Briley  
Sharon Campbell

Joseph A. Carsanaro  
Douglas Roy Carver  
Shine Chang  
Michael Tsu-Lin Chen

Stacy-Ann Christian  
Coastal Community Foundations  
of S.C.

Jean Marie Colthurst  
Peter Christian Connor  
Francoise Marie Cornet  
Julia De Clerque

*In honor of Caroline Lee B.*

*De Clerque*

*In memory of Gwendolyn Farmer*

*Lee Baugh Beard*

Ralph Alphonse DeMasi

Juli J. Desjardins

Anne M. Downs

Scott Davis Duncan

Michael James Dziamba

Dennis Lyn Ewald &

Cheryl Homzak Ewald

Laurel Ann Files

Bernard Vincent Franko III &

Edna Brewbaker Franko

Elizabeth Ann Franko

Elizabeth A. French

Robert Ernest Gandley

Evelyn Joyce Glass

G. Jay Graepel

Kathleen Marie Gray

Barbara Norton Hamilton

Pamela Gayle Hanna

Susan Lee Hartmaier

Health Strategies & Solutions Inc.

Sharon L. Heinrich

*In honor of Dr. John Hatch*

Elaine B. Hoffman

Christina A. Hoover

George & Virginia Howard

C. Christopher Idol &

Marion Wilson Idol

Nalin Johri

Baxter Lee Jones

Wanda Kaye Jones

Adena Cohen Kaplan

Sarah T. Kavanagh

Faison Green Knox

Jennifer Elston Lafata

Roberta Sevin Lane

Andrew James &

Catherine Edwards Lawler

Sheri Johnson Lawrence

David Ernest Layland

Kelvin K. Lee

Marcia Joanne Levenstein

Megan A. Lewis

Charles Elroy Llewellyn III &

Deborah Bowen Llewellyn

Megan Elsener Lott

Kathryn Marley Magruder

James Harry Mann Jr.

Monte William &

Marsha Ann Smith Masten

Craig Stephen Maughan

William Sheffield McCoy

John Knox McGill

Heather Frances McNamara

Melissa Lynn McPheeters

Jeffrey & Melinda Barefoot Michelson

William & Mary Jane Mietlowski

Beverly Nieman Mirman

Carlton Virginia Jackson Mitchell

Alexis Anne Moore  
 William Clark Moore  
 Philip Albert Moses &  
   Elizabeth Terry McMeekin  
 Janet Mullaney  
 Erin Marie Nichols  
 Donald Leigh & Mary Mullins Oberlin  
 Joan Ann Oppenheimer  
 Anne Townsend Overman  
 Zoe Henderson Parker  
 David Leonard Parks  
 Howard B. Perry  
 Amy Thorne Pitt  
 Graydon O. Pleasants Jr. &  
   Margaret B. Scales  
 Lewis William Pollack  
 Robert Clark Pottharst  
 John Stephen Preisser Jr.  
 Lendy Wayne Pridgen  
 Princeton Healthcare System  
   *In honor of Dr. Edwin Fisher*  
 David Alan Reckhow &  
   Catherine Grace Wanat  
 Christopher Rimer & Christine Rimer  
 Irving I. Rimer  
 William Anthony Rutala  
 SABRE Health & Safety  
 Susan Marie Sanders  
 Alan James Smith  
 Andrea Dee Smith  
 Fraser B. Smith  
 Jason Baker Smith & Paige Hall Smith  
 Cynthia C. Snyder &  
   Charles Fennimore  
   *In memory of Susanne Lynas*  
   *Moulton*  
 John William Stanback &  
   Marguerite Cooney Stanback  
 Paul Edward Stang & Wendy Liebling  
 Gregg Martin Stave &  
   Christine Marie Hunt  
 Susan E. Strunk  
 Arya Sundaram  
 Lauren Thie

Katrina Foss Trivers  
 United Way of Central Indiana Inc.  
 Laurence Octavius Watkins  
 Gary William & Anne Murphy  
 Deborah Marie Winn  
 Winston-Salem Foundation

---

**\$100**  
**TO \$249**

Anita Ann Abraham  
 Jefferson Irwin &  
   Kathleen Munro Adams  
 Julie Adams  
 Daniel Bartholomew Ahern  
 Brent Andrew Altemose  
 Oscar R. Aylor  
 C.W. Bartholomai  
 Margaret Ann Benton  
 Aaron Earl Blair  
 Emily Trexler Blair  
 David Borasky  
 James Henry Borchardt  
 Rebekah Sue Bowden  
 Linda Thompson Briggs  
 Margaret Dodd Britton  
 C. Vance Brooks IV  
 James Paul Bulman  
 Victor Marcial Caceres  
 Constance Lavern Caldwell  
 Shirley Elizabeth Callahan  
 Gregory Paul Campbell  
 Paula Jane Campbell  
 Robert Frederick Campbell  
 Daniel Jonathan Caplan  
 Juan Fernandez Carvajal &  
   Suzanne Green Carvajal  
 Shengder David Chang  
 Anita Miller Chesney  
 Dorothy Cilenti  
 Eloise Ann Clark  
 Ronald Harper Clitherow  
 Basil Gust Constantelos

Gladys Cordes  
   *In memory of John Moulton*  
 Helen Hunter Cox  
 Nancy Bosworth Crutchfield  
 Stephen Thomas Daly  
 Charles Eric Danielson  
 Beverly Priddy Derr  
 Andy & Rebecca Diamondstein  
 Jamie Thomas Dilweg  
 Robert Arthur Duletsky  
 Melinda Eaton  
 Amanda Leigh Edens  
 Margaret Hilda Elliott  
 Alice Ross Ely  
 Paul Campbell Erwin  
 Joyce M. Gallimore  
 Lyne S. Gamble Jr.  
 Brad Vance Gardner &  
   Julia Eaker Gardner  
 Lisa Armsrees Gillespie  
 Shelley Diane Goldon  
 Nick Joseph Gonchoroff &  
   Daryl Gonchoroff  
 Gary Norman Greenberg  
 Jean Harris Hanson  
 Verna Bernard Hare  
 Heidi Anne Harkins  
 Gene Albert Heath  
 Angie Hemingway  
 George Joseph Hermann  
 Alison Sue Rose Hilton  
 Nicholas M. Hollander &  
   Krista Hollander  
   *In honor of Dr. Jo Anne Earp*  
 Edward Olin &  
   Elizabeth Farris Holloway  
 Richard H. Holmes  
 David Bruce Holstein  
 Denise Kathryn Houston  
 Vernon Brock Hunt  
 Timothy James Iafolla  
 Michael Bradley Jacobs  
 Vickie Harriette Jernigan  
 Elmer Marcus Johnson



# ..... GIFTS TO THE *Jo Anne Earp* TRIBUTE FUND .....



PHOTO BY TOM FULDNER

Dr. Jo Anne Earp (left) with husband Dr. Shelley Earp

In April 2013, Jo Anne Earp, ScD, former chair and longtime professor of health behavior at the Gillings School, drew more than 200 current and former students, colleagues and friends to events celebrating her 40-year career in public health. Earp's career has included 1960s activism, educating and mentoring hundreds of students, researching and advocating for women's health, civil rights, and improved health care quality, equity and access.

See photos from the "Earpfest" events at [tinyurl.com/sph-flickr-earp2013](http://tinyurl.com/sph-flickr-earp2013).

Our thanks go to those listed below who have made a gift in her honor. To make your gift, contact Stephen Couch at [spcouch@email.unc.edu](mailto:spcouch@email.unc.edu) or 919.966.0198, or visit [giving.unc.edu/gift/sph](http://giving.unc.edu/gift/sph).

Anonymous  
J. Michael Bowling &  
Denise C. Bowling  
Noel Brewer  
Dennis Brewster &  
Denise G. Brewster  
Michele N. Clark  
J. Kenneth Conover & Lynda  
A. Anderson  
Allison P. Crouch  
H. Shelton Earp III  
Susan T. Ennett &  
Wayne E. Pein  
Edwin Fisher  
Robert & Susanne Fletcher  
Elizabeth A. French  
Melissa B. Gilkey

Shelley D. Golden  
Priscilla A. Guild  
Gail Henderson &  
Myron S. Cohen  
David H. Jolly  
Michelle C. Kegler  
Joseph G. Lee  
Mazie J. Levenson  
Karen S. Lissy  
Leslie Lytle  
Regina F. Magit  
Erma W. Manoncourt  
Margo I. Michaels  
Rose W. Monahan &  
Paul E. Monahan  
Alexis A. Moore  
Ingrid H. Morris

Philip A. Moses &  
Elizabeth T. McMeekin  
Cheryl A. Moyer &  
Jeffrey S. Moyer  
Laura Pearson  
Barry M. Popkin  
Sheldon M. Retchin &  
Tracy N. Retchin  
Kurt Ribisl  
Barbara K. Rimer &  
Bernard Glassman  
Christopher L. Ringwalt &  
Sharon S. Ringwalt  
Donald L. Rosenstein  
Anna P. Schenck &  
James S. Schenck IV  
Victor & Marion Schoenbach

Ernest Schoenfeld &  
Mary Margaret S.  
Schoenfeld  
Celette S. Skinner  
David S. Strogatz &  
Rosalind P. Thomas  
Julie E. Sweedler  
Rosalind P. Thomas &  
David S. Strogatz  
T. Rowe Price Program for  
Charitable Giving  
Christopher P. Toumey &  
Kathryn J. Luchok  
Eugenia A. Upchurch  
Herta A. Weber  
Gregory K. Whitaker &  
Jennifer M. Gierisch

David Hughes Jolly  
 Michele Laura Jonsson Funk  
 Francine Katz Jupiter  
 Karen Sue Kaeberle  
 Charles Walton Kirby III  
 Helen Rosalie Kohler  
 Kim Lanette Larson  
 Paul Thomas Lauria  
*In honor of Don Lauria*  
 Joseph Gilbert Louis Lee  
*In honor of Ms. Dorothy Lee*  
 Charles Albert Leprevost  
 James Robert Leserman  
 Steven Marc & Barcey Thurston Levy  
 Hanford H. Lin  
 Henry N. Lin  
 Donald Daniel Lisnerski  
 Margaret A. Lucking  
*In honor of Jack & Peggy Wildman  
 and Bob & Patricia Wildman*  
 William Whiting Lyon  
 Allen Martin Mabry  
 Susan Simmons MacLean  
 Meera Tina Markanda  
 Katie Massey  
 Gerry Lynn Mattson  
 Joseph Vernon Mauney &  
 Gretchen Riser Mauney  
 Kimberly L. McCombs-Thornton  
 Nancy Mari Mcgee  
 Leslie Jane McGeorge  
 Susan Lee McIntyre  
 Katherine Kennedy McLeod  
 Manoj P. Menson  
 Henry Tyrus & Barbetha Miller  
 J. Stephen Miller Jr.  
 Noel Ross Mohberg  
 David McDaniel Moore III &  
 Hannah Yang Moore  
 Donald L. Moore  
 Patricia Griпка Moorman  
 Anna Chaiko Morrill  
 Ingrid Hemela Morris  
 John Howard & Suzanne C. Morrow

John Bertrand Mulligan Jr.  
 Darin Todd Mullis  
 Michael Joseph &  
 Lorraine Lyzun Murphy  
 Susan Allbritton Murphy  
 NAHSE  
 Network for Good  
 Richard Davis Olin  
 L. Dean Oliver  
 Jesse O'Neal & Janice Whitaker  
 Margaret Ostafin  
 Janice Ann Paris  
 Nancy Jordan Parker  
 Wendy Marie Penfield  
 Susan Grant Phelps  
 Ephraim Henry Phillippe III  
 A. Keith & Kimberly Clark Philips  
 George H. Pink & Peggy Leatt  
 Sara Grabe Poux  
 E. Charlton Prather  
 Rose Marie Pratt  
 Shiny Purushothaman  
 Robert Martin Quillin  
 Jacqueline A. Quirk  
 Martha Jean Reddout  
 Tara Renae Rheault  
 Thomas Andrew Ridgik  
 Elizabeth Rimer  
*In honor of Dr. Barbara K. Rimer*  
 Sara Rimer  
*In honor of Dr. Barbara K. Rimer*  
 Yehuda Ringel & Tamar Ringel-Kulka  
 Karen Tager Rivo  
 Malcolm Clive Roberts  
 Larry Philip Robinson  
 Catherine Palisi Rowan  
 Michael Carl Sachtleben  
 The Scientific Consulting Group  
 Brian M. Shelley & Nelly E. Taveras  
 Chuan-Feng Shih  
 Valeria Denise Shropshire  
 Jeffrey Antonio Simms  
 David Smikle & Svenja Sanders  
 Valerie Lewis Stallings

Mary Charles Suther  
 Julie E. Sweedler  
 Robert Charles Sykes  
 Reid Tatum  
 Eboni Monique Taylor  
 Steven Michael &  
 Carol Richmond Teutsch  
 Margaret Shaw Thomas  
 Paul David Trinkoff &  
 Alison Miller Trinkoff  
 Eugenia Anne Upchurch  
 William Alvin Van Wie II  
 Andrew Charles Voetsch &  
 Karen Pilliod Voetsch  
 Robert Irving Wakeley  
 Charles Raymond Wakild &  
 Susan Heuer Wakild  
 Martha Wilkinson Waller  
 Adeline Gracey Washington  
 Ganesa Rebecca Wegienka  
 Laurence A. Wescott &  
 Constance B. Wescott  
 Edward Richard Williams  
 Erica Lynn Wilmoth  
 Melvin Ray Witcher Jr.  
 Leslie Brown Wood  
 Carl Nobuo Yoshizawa  
 William N. Zelman  
 Julia Wit Zupko

---

## UNDER \$100

Anonymous (3)  
 Evelyn Larsen Aabel  
 Marshall Cecil Abee  
 Academy of Nutrition & Dietetics  
 Nazir Ahmed Adam &  
 Keir Davis Adam  
 Korede Kafayat Adegoke  
 Richard Arthur Ainsworth & Margaret  
 Ellen Rowan  
 Jordan Alexander Albritton  
 Eddie Alcorn

Jean Elizabeth Alexander  
Lorraine Kathleen Alexander  
M. Taylor Alexander Jr.  
Stanlin Alexander  
Van Sizar Allen  
E. Jackson Allison Jr.  
Amanda Jean Allman  
Catherine Dove Allport  
Alexandra Elise Almeter  
Marquietta Plummer Alston  
Rebecca P. Amthor  
Benjamin Thomas Anders  
Charles Harold &  
Debra Dierksmeier Anderson  
John J. B. Anderson  
Judith Virginia Anderson  
Kathleen Lecus Anderson  
Norma Powers Anderson  
Terry P. Anderson  
Tiffany Renee Anderson  
Lillian McKie Andress  
David Francis Andrews  
William Moseley Archer III &  
Ellen Hatley Archer  
Mary Susan Ariosto-Coe  
Micaela Yardley Arthur  
Demarcus Shontae' Artis  
Abena Konadu Asante  
Evan Arthur Ashkin  
Carol S. Ashley  
Christopher Delton Atkinson  
Annella Jean Auer  
Janet Veinot Ayer  
Laura Elizabeth Bach  
Jonathan Theron & Angela C. Bailey  
Justin Timothy Bailey  
Monica Reid Bailey  
Jason Guy Baker &  
Sarah Walker Baker  
John Curry Baker Jr.

Philip Morgan Baker  
Stephanie Lynnette Baker  
Miriam Parke Balding  
Alan Mills Ball &  
Colleen Dooling Ball  
*In honor of Bill Tyroler*  
Marissa Ellen Baltus  
Amika Renee Banfield  
Beth Baptist  
*In honor of Mr. Jack Eugene Wilson*  
Violette Kasica Barasch  
Atilio Barbeito  
Nathaniel Vincent Barbo  
Mark Douglas Bardill Sr. &  
Suzette Holbrook Bardill  
Brian Gregory Barkley  
Cassandra Janowski Barnhart  
David Allen Barskey &  
Mary Ann Baviello  
Andi Weiss Bartczak  
Mildred Bartko  
Bonnie A. Bass  
Vickie E. Bass  
Patricia Basta  
Anna Elizabeth Bauer  
Michael Edward &  
Carol Michiko Baum  
Melissa S. Bauserman  
Samuel Baum & Hilda Pekarsky  
Alan Sol Baumgarten &  
Judith L. Hoffman  
Rita T. Beatty  
Kristen Beam Beavers  
Ashley Beecham  
Suzanne Feikema Beeler  
Tammy Lynn Belinsky  
Mary Elizabeth Bell  
*In memory of Dr. Robert Millikan*  
H. Earle Belue  
Ronald Edward & Linda A. Benton  
Samuel Isaac Berchuck  
Christopher Douglas Bergsten  
Christina Bernadotte  
James Edward Bernatzky

Robert Alan Berndt &  
Christine S. Berndt  
Jay Michael Bernhardt  
Susan D. Bernstein  
Nathan Berolzheimer &  
Patricia Malinda Barron  
Kendall Emenheiser Berry  
Puru Bhiwandiwalla  
Briton Michele Bieze  
D. Mark Billings & Maira Billings  
Lora Faley Bingham  
Taffey Louise Bisbee  
Matthew Robert Bittel  
Michelle Jones Blackmon  
Alice Nash Blackwelder  
John David Blankfield  
David J. L. Blatt &  
Ranae Pamela Reese  
Elizabeth Carhart Bluhm  
Jarol B. Boan  
Heidemarie W. Boas  
Margaret Cartledge Boatwright  
Lindsey Bickers Bock  
F. James Boehm  
Stephen Paul Bogdewic &  
Elizabeth Anne Lee  
Kimberly Whitman Bohler  
George Foote Bond Jr. &  
Garbara Taylor Bond  
Michael Lynn Boner  
Jonathan Levi Boortz-Marx  
*In honor of Dr. Richard Boortz-  
Marx & Mrs. Cynthia Boortz-Marx*  
Steven C. Boss  
Barbara Sue Bostian  
Valarie Keck Boughman  
Ronald Walter Bousquet &  
Estelle Bousquet  
Wendy Jane Bowers-Gachesa  
James H. Bowles  
Joan Kirkham Boyd  
Carolyn C. Bradford  
Sarah Kathryn Bradford  
Jo Ellen Brandmeyer



Jeanette Hollar Braswell  
 Joe M. Braun  
 Steven John Bredehoeft &  
     Gail Wood Bredehoeft  
 Carol Elaine Breland  
 Colleen Nagle Brenegan  
 Bridget Brennan  
 Dennis & Denise G. Brewster  
     *In honor of Dr. Jo Anne Earp*  
 William Robert Brieger  
 James Michael Brindle  
 Louise Annette Brinton  
 Sarah Brittingham  
 Jessica Taylor Broadus  
 Susan Irene Brock  
 Emily Suzanne Brouwer  
 Blanche Covington Brown  
 Elizabeth Weld Brown  
 Karen Elizabeth Brown  
 Beth Brown-Limmer  
 Wendy Sims Bryant  
 Katelyn Rihana Bryant-Comstock  
 Chris Brian Buchanan  
 Phillip Heller Buchen  
 Kyle David Bucher  
 Raymond Douglas Buck &  
     Janice Brownfield Buck  
 William Gordon Buckman Sr.  
 Tyler Wayne Buckner  
 Brenda Buescher  
 John Gilbert Buie Jr. &  
     Mary Green Buie  
 Karin Kristin Bultman  
 Lisa Tsipis Bultman  
 Hugh Jonathan &  
     Dorothy Moffett Burford  
 Suzanne Kathryn Burlone  
 Joseph Wayne Burris Jr.  
 Ann Edwards Burruss  
 Christopher Andrew Burton  
 Elizabeth Doan Bushell  
 George Davis Bussey  
 James Frederick Byrne  
 Brian Calingaert

## GIVING TO THE SCHOOL'S ANNUAL FUND

*is an investment in  
tomorrow's public health heroes*

Over the last four years, Annual Fund contributions have allowed us to offer scholarships to students in each of the School's departments—a total of 69 Annual Fund Scholars to date.

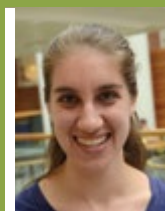
In fall 2013, thanks to the generosity of alumni and friends who give to the Fund, we provided scholarships to 11 students.

An investment in these young scholars is an investment in public health progress—in our state, across the U.S. and around the world, wherever they work and serve. Please join us in supporting in the next generation of public health heroes.

For more information about Annual Fund Scholarships or to make a gift, visit [sph.unc.edu/annualfund](http://sph.unc.edu/annualfund) or contact Deanna Wilkie at [dwilkie@unc.edu](mailto:dwilkie@unc.edu) or 919.966.0198.



Nosipho Beufort  
PUBLIC HEALTH  
LEADERSHIP PROGRAM



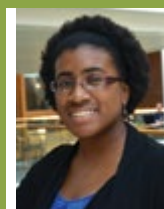
Nicole Butera  
BIOSTATISTICS



May Chen  
HEALTH BEHAVIOR



Elizabeth Garry  
EPIDEMIOLOGY



Jasmin Hainey  
HEALTH POLICY AND  
MANAGEMENT



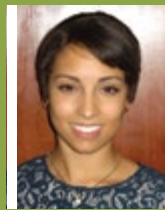
David Holcomb  
ENVIRONMENTAL  
SCIENCES & ENGINEERING



Manasi Kulkarni  
HEALTH POLICY AND  
MANAGEMENT



Poulami Maitra  
BIOSTATISTICS



Hallie Ericson Pritchett  
PUBLIC HEALTH  
LEADERSHIP PROGRAM



Erlene Miller  
EPIDEMIOLOGY



Alberto Vargas  
NUTRITION

# POPKIN'S PROFESSORSHIP GIFT WILL CONTINUE THE FIGHT AGAINST OBESITY

**Where in the world is Barry Popkin?**  
**He could be anywhere.**

Barry Popkin, PhD, the Gillings School's W.R. Kenan Jr. Distinguished Professor of Global Nutrition, consults or leads studies in China, Russia, the Philippines, Brazil, Mexico and other countries. As a faculty member since 1977, he examines changes in diet, physical activity and body composition in groups of people around the world, leading the charge for policy changes at the state and national levels.

Popkin developed the concept and the term "nutrition transition" to describe shifts in patterns of eating, drinking and moving and subsequent body composition. He and other scholars and policy makers now use this to capture rapid shifts in obesity globally.

In June 2013, he organized a weeklong meeting of global nutrition leaders and members of major foundations and international agencies to address large-scale policy change related to obesity in low- and middle-income countries ([www.bellagioobesity2013.org](http://www.bellagioobesity2013.org)).

Despite his love of travel, one of his favorite places to collaborate is right here at home. Popkin has taken dozens of doctoral students and junior faculty under his wing, helping

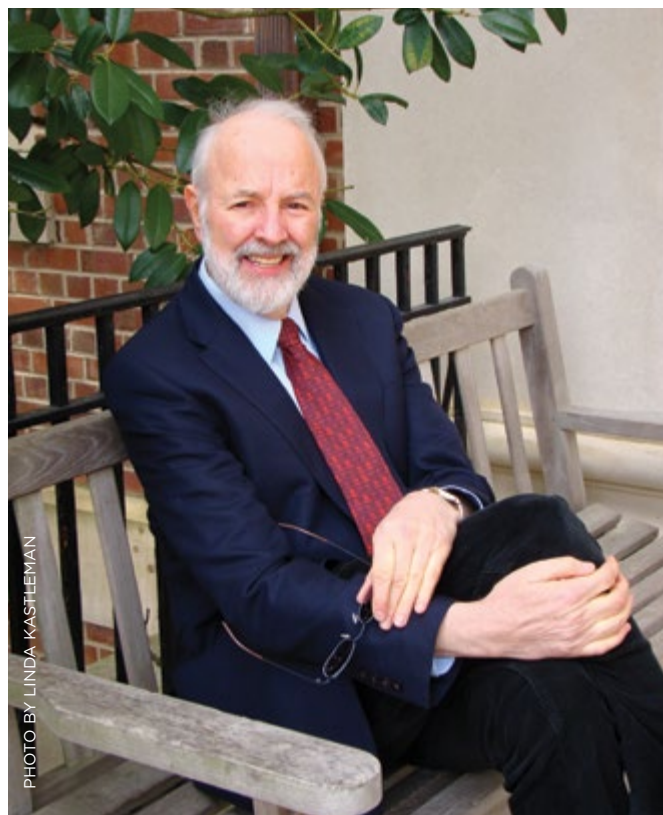


PHOTO BY LINDA KASTLEMAN

Dr. Barry Popkin

**"He has an amazing  
ability to mentor  
colleagues across  
all levels."**

—PENNY GORDON-LARSEN, PHD

them grow as researchers and people and become better prepared to be respected junior faculty members.

"Barry has been a terrific mentor," says Carmen Piernas Sanchez, PhD, recent nutrition alumna. "He provided me with all kinds of resources to be successful. He helped me feel confident and not be afraid to take risks."

"He has an amazing ability to mentor colleagues across all levels," adds Penny Gordon-Larsen, PhD, now professor of

nutrition at the School. “He has successfully advised countless faculty members on how to navigate difficult waters as they move up through the ranks.”

Now, Popkin has made more tangible his support for young researchers. This year, he established the first of several Barry Popkin Distinguished Professorships in Public Health Nutrition, an award to support an assistant or associate professor in nutrition at the School.

He intends the award to help advance epidemiological research on determinants, consequences and solutions to U.S. and global dietary, activity and nutrition-related noncommunicable diseases, especially obesity.

“It was the combination of service and research that brought me to UNC’s public health school,” says Popkin, a former community organizer whose doctorate is in economics. “It is the School’s fostering of interdisciplinary collaboration in U.S. and global nutrition and obesity prevention that I hope to see continued with this endowment.”

—Linda Kastleman

## GIVING

Your gift of a professorship will advance research to help solve an important public health challenge.

For more information, contact the School’s Office of External Affairs at 919.966.0198, or visit [giving.unc.edu/gift/sph](http://giving.unc.edu/gift/sph).

Leigh Fleming Callahan  
Jolynne Campbell  
Joseph Edward Campbell Sr.

Joanne Rita Campione  
Abby Caroline Cannon  
Carey McGinnis Capell  
Robert Francis Cappel Jr.

Kim Serden Caraganis  
Martha Christine Carlough  
Bernice Wallace Carmon

Jacob Michael Carr  
Margaret Devers Carroll

Lori K. Carswell

Marlene Orr Carver

Cecilia Eugenia Casanueva

L. Douglas Case

Edward Lynn Casey

Edward Lee Cavanaugh

Betty Ellen Caywood

Jill Kristin Center

Carl Francis Cerco &

Carolyn Miller Cerco

Joe Carroll Chambers

Charles Groce Chandler &

Linda Laughridge Chandler

Thomas Yancey Chandler

Daniel Micah & Sarah Alligood

Chang

Yung-Lin Judy Chang

Emily Toms Chaplin

Janella Faye Chapline

Lou Anne Flynt Cheshire

Mun Hui Chia

Mary Anne Chillingworth

Joan Christison-Lagay

Elizabeth Edith Christoph

Nancy E. Clapp-Channing

Kathryn Clark

Kevin James Clark

Lawrence Michael Clark

Marjorie McCutchen Clark

Michele Nicole Clark

Maurine G. Claver

Helen Ehrhardt Clawson

Meghan May Clithero

Ellen Alexis Coates

Robert Mcledon Coble

W. Gerald Cochran

Diane Davis Cole

Genevieve Lowry Cole

Rachel Elizabeth Cole

Richard Francis Cole

Thomas Ross Coleman

Marietta Denny Coles

Arthur Collier III &

Phyllis Lehman Collier

Patrick Comerford

Lee Ann Elizabeth Conard

Sarah Bond Conley

Renee Avery Connelly

Wilma H. Conner

Carol Ann Cook

Lewis Selkirk Coonley Jr. &

Linda Murphy Coonley

Emily Rose Miller Cooper

Mary Paul Moore Cooper

Michelle Gemborys Cooper

Phyllis M. Cote

*In memory of Susanne Lynas*

*Moulton*

Nilofer Couture

Melva Trinetta Covington

John Charles Cowan Jr. &

Marie Cable Cowan

William Irvine Cowden

Barbara Wilson Cox

Carol Gordon Cox

Donna Lynne Cragle

John Burton Creech Jr.

Deborah Jessup Creed

Caroline Melia Crews

John Michael Crisafulli

Bobbie J. Cross

*In honor of Dr. MaryAnn Farthing*

Kathy Teer Crumpler

Nelida Alba Cuenca

Rachanee Anne Curry

David Lawrence Cusic



John H. Dailey  
Deborah Renee Dale  
James Elmer Dale  
Jessica Lynn Damon  
Christin Daniels  
Melissa Christensen Daniels  
Betty Jo Blalock Daniti  
Santanu Kumar Datta  
H. Sandlin Davenport  
Boyd Hill Davis  
Debra Lynne Davis  
Edith Maye Davis  
Frederick Emerson Davis  
Katherine Wengen Davis  
Lance Lee Davis  
Lumbe' Kibebe Davis  
Marcia von Thaden Davis  
Rachel M. Davis  
Ronald Gerard Davis  
Jackson Harvey Day  
Allison Mary Deal  
Michael Morgan Dechman  
Clifford Earl Decker Jr.  
Joseph Edward Decosimo &  
Kasey Poole Decosimo  
Marion Elliott Deerhake  
Kimberly Rae Dehler  
Debra McDaniel Delane  
Carrie Anne Delcomyn  
Alysa Marie Delgado  
Daphne A. Delgado  
Gregory Vladimir deLissovoy  
Lisa Wiles Delphias  
Guido DeMaere &  
Catherine Auman DeMaere  
*In memory of Susanne Lynas  
Moulton*  
Nancy Helen DeMaria  
Jeffrey Darlington Denit  
Alexis Christine Dennis

Donella Dorothy Dent  
Claudia Helena Ma DeOliveira  
Patricia M. DeRosa  
Leslie A. deRosset  
Drew Philip Desher  
Michael A. DeSpirito  
*In memory of Mrs. Cecilia DeSpirito*  
Nicole Cardello Deziel  
Linda Webster Dicker  
Edward M. Dieser  
Mark Boberg Dignan  
Peggye Dilworth-Anderson  
Smrithi Dinesh Divakaran  
Patricia Carol Dischinger  
Josephine Joan Disparti  
Karl Maximilian Doetsch  
Nancy Dole  
Ruth Machemer Domurath  
Lauren Joy Donoghue  
Katlyn Laura Donohue  
Matthew Donohue  
Joan Walters Drake  
Kenyon Lee Draper  
Margaret Mary Drennan  
Edmond Daniel Duffy Jr.  
Jeanne Marshall Duncan  
Kevin Holden Dunn  
Patricia Carolyn Dunn  
Rebecca Mae Dunn  
Holly Marie Durham  
Virginia Dudley Durrett  
Phyllis B. Dworsky  
*In memory of Susanne Lynas  
Moulton*  
Lauren Elizabeth Eades  
Corey Eagan  
Suzanne Elizabeth Eaton-Jones  
Alrick S. Edwards  
Charles Jackson Egli  
*In memory of Mrs. Mary H. Egli*  
Edward P. Ehlinger  
Lauren E. Elder  
Laurence Bruce Elliott  
John W. Ellis & Elva L. Ellis

Michael A. Ellrott  
Cheryl Sue Elman  
Lauren Hastings Elmore  
Kenneth Harris Elstein &  
Lynette Lorene Keyes-Elstein  
Catherine Boland Emrick  
Michael William Enghauser  
Patricia Allen Estes  
Tammy Norris Evans  
Michelle Johnson Everett  
Beth Ann S. Everly  
Richard Bernard Everson  
Adam Mitchell Eyring Sr.  
Jo Anne Livingston Fahey  
Leila Family  
Helen L. Farrell  
Kembrie Greene Farrow  
R. Kelly Faulk Jr. &  
Robin Elliott-Faulk  
Louisa Kersh Feeley  
Sara Beth Feistritz  
Paul Jay Feldblum  
Praveen David Fernandes  
Lindsay Erin Fernandez-Rhodes  
John R. Fieberg  
Angelica Figueroa & Matt Rutledge  
Constance Anne Finch  
Amy Ellen Fine  
Kenneth B. Fiser  
Leslie Fisher  
Anne Marie Fitzgerald  
Kevin Michael Fitzpatrick  
Margaret Mary Fitzsimmons  
Terry Lynn Flanagan  
Valerie Lynn Flax  
Garrien Michael Floyd Jr. &  
Tanya Glosson Floyd  
Louvenia M. Floyd  
Robert Harold Forbes Jr.  
Anne Jane Ford  
Nina Elizabeth Forestieri  
Emily Gordon Fowler  
Ashleigh Michelle Francis  
Jennifer Jean Francis

Alison H. Frazzini  
 Lisa Fredman  
 Carol A. Freedman  
*In memory of Mrs. Rosa Williamson  
 Small*  
 Janice Andrea Freedman  
 Anne Chenicek Freeman  
 Daniel Herbert Freeman Jr.  
 Alexa Freese  
 Alexandra Steiner French  
 Elizabeth Grace Friedberger  
 Evan T. Friend  
 A. Dewane Frutiger  
 Robert E. Fry  
 Robinson Fulwood  
 Nancy Hall Gabianelli  
 Patricia Natzke Gadow  
 Charles Jeffrey Gage  
 Jack H. & Susanne Gakstatter  
 Steven Brian & Dianne Shihadi Gallup  
 John Farrell Gamble  
 Bruce Alan Gantner  
 James Brian Garber  
 Dianna E. Gardner  
 Marie Whitehurst Gardner  
 Richard Vincent Gargagliano &  
 Joan Hedgecock  
 Rebecca Camille Garr  
 Florence W. Garvin  
 Gene Garza  
 Tara Gaston  
 Tanya Jean Gatenby  
 Diana Marilyn Gaviria  
 Bruce Gary Gellin  
 Nancy O'Pry Gentry  
 Jane Pentland Getchell  
 Talene Ghazarian  
 Preeya S. Gholkar  
 Thomas Francis Gibson  
 Jennifer Marie Gierisch  
 Mary Beth Russin Gilboy  
 Melissa Blair Gilkey  
 Johanna Margaretha Gilstrap  
 Constance Glasby

Ida Patricia Glasgow  
 Allison M. Glasser  
 Lucinda Howell Glover  
 Alice Jane Godfrey  
 Cathryn Ann Goedert  
 Aime Lyn Goldberg  
 Julie Anne Golding  
 Jason H. Goldsmith  
 Jonathan David Goldsmith &  
 Amira Elkodsi Goldsmith  
 J. Barry Goldstein & JoAnn Lamm  
 Kristen Hardee Gonzalez  
 Bryan C. Gooding  
 Kay Gooding  
 Margaret C. Goodrich  
 David Jeremy Gordon  
 Mary Irwin Gordon  
 Herman Clark Gore  
 Kathleen C. Gotterup  
 Hilton Thomas Goulson  
 Susan Cohen Gower  
 Mary Lee Donoho Grafe  
 Abram Jordan Graham  
 C. Montrose Graham Jr.  
 Christine M. Grauer  
 Debra Ann Green  
 Mia Freeman Green  
 Sherri Lynn Green  
 Brian Huger Greene Jr.  
 Dana M. Greene  
 Nicole Heider Greeson  
 Sara Perron Gregory  
 Laura Anne Griffin  
 Stefan Johannes Grimberg  
 Kathryn Elizabeth Lesle Grimes  
 Peter Michael Griswold  
 Margaret Kneale Groening  
 Thomas Seth Grogan Jr.  
 E. Henry Guevara  
 Mark Guggenheim  
 Martin Edward Gurtz  
 George Arthur Guthrie Jr.  
 Catherine Ann Gutmann  
 John R. & Suzanne Guzek

Raymond William Hackney Jr.  
 Chase Haddix  
 Khalil & Joumana Khalil Haidar  
 Philip Wills Haines  
 Katelin Marie Hairgrove  
 Anjum Hajat  
 Robert Henry Haladay  
 Janet Shaver Hall  
 Lynne Anderson Hall  
 Ruffin Lewis Hall &  
 Cynthia Mueller Hall  
 Susan Audrey Hall  
 Tyrone Ahmad Hall  
 Charles Brady Hamilton  
 Elizabeth Nelson Hamilton



**\$12.5 MILLION**

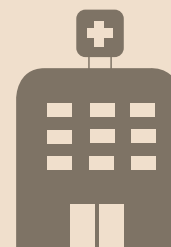
awarded to Dr. Michael Kosorok for  
 innovation in cancer clinical trial  
 designs, so effective treatments get  
 to patients faster; includes  
 partnerships with Duke University  
 and N.C. State University.

Erica Leigh Hamilton  
 Elizabeth Fleming Hammett  
 Amy Joy Handler  
 Chassidy Hanley  
 Leeroy P. & Susan Kay Hanna  
 Myra Mott Bomba Hanni  
 Christine Starkey Hardy  
 Mary-Aileen Harkins-Schwarz  
 Kevin James Harlen  
 Bethany Joyce Harmon  
 Jane Coltrane Harrington  
 Horace Harris  
 Kari Noel Harris  
 Robert Lee Harris Jr. &  
 Peggy L. Harris

Elizabeth Payne Harrison  
J. Bruce Harstad  
Carolyn Cantlay Hart  
Fletcher Lee Hartsell Jr.  
Erin Kathleen Hartwell  
Kari Hartwig  
Elizabeth Marilyn Harvey  
Joseph Kyd & Janelle Hood Haseman  
John Hassett & Judith Crawford  
Liza Makowski Hayes  
Yumiko Ohta Hayes  
Jennifer Smart Haynes  
Kathleen Edwards Headen  
Melissa Dawn Hearsch  
Thomas H. Heath & Gail Moody Heath  
David Steven Heesacker  
Robert & Ellen Henak  
*In honor of William Tyroler*  
Amy Lyn Henes  
Jo Anne Kirk Henry  
Catherine Nance Hensley  
Evelyn Small Henson  
Jennifer Resh Herrmann  
Avis Hernwall High  
Larry Odell Hill  
Ruth Linder Hines  
Russell Worth Hinshaw  
William Bernard Hirsch  
Sandra McDaniel Hodges  
Stephen George Hoffman Jr. &  
Theresa Corsaro Hoffman  
Kenneth William Hoffner Jr. &  
Jeanne Cardi Hoffner  
Gaynelle Hogan  
Suzanne Noury Holden  
Gwyn S. Hollenbeck  
Bryan Robert Hollinger  
Samuel James Holloway Sr.  
Sara Cook Holloway  
Thomas Clemmer Holloway

Richard Lawrence Holmes  
W. Howard Holsenbeck  
Douglas M. Holstein  
William Edward Homovec  
Michael H. Honeycutt  
*In memory of Susanne Lynas  
Moulton*  
Alexandra L. Hopkins  
David Peter Horn  
Janice Ruffini Horner  
Louise Foushee Horney  
Jared R. Horton  
Mark B. Horton & Mary Ann Miller  
Brian David Horvath  
Laura Oredola Houenou  
Cynthia C. Houston  
Penelope Page Howards  
Jacqueline Noble Howell  
Joseph Toy Howell III &  
Embry Martin Howell  
Tony T. Huang & Sue L. Huang  
Carol Lee Hubbard  
T. Terrill Hudgins &  
Hope Elaine Bryan  
Brenda Hudson  
Patty Rosenquist Huffman  
Gary Franklin Hughey  
Rachel Loree Hulkower  
Charles Glenn Humble  
George Harris Huntley  
Jon M. Hussey  
Vi Gia Huynh  
Marshall L. Hyatt  
Deborah Anne Hyland  
Tara Illsley  
Deborah Dundas Ingram  
James Carney Irion &  
Rosemary Hickey Irion  
Patricia Gardzinir Isbell  
Lois Simmons Isler  
Robbin F. Itzler  
A. Lee Ivester  
Elizabeth Stephens Jack  
Alexander M. Jackson

Crystal Larae Jackson  
Judith Cochrane Jacobs  
Jerome R. & Barbara A. Jakubczak  
Mary Grenz Jalloh  
Mohamed Ali Jalloh  
A. Everette James Jr. &  
Nancy Jane Farmer  
Mary McRae James  
Cathy Anne Jenkins  
James Joseph Jetter  
Dale Thomas Jobs  
Derek Michael Johnson  
Jaret Carl Johnson



#### MORE THAN TWO DOZEN RURAL HOSPITALS

consulted with Gillings School faculty  
members Drs. Mark Holmes and George  
Pink to improve operational efficiency  
and financial viability.

Jessica Monet Johnson  
John Levern Johnson  
Kathryn Schmidt Johnson  
Theodore Michael Johnson II &  
Susan Paul Johnson  
Trent Ober Johnson  
Willie Spoon Johnson  
Wilma Griffin Johnson  
M.C. Johnson-Thompson  
Richard Paul Bart & Heidi Johnston  
Bobbette Price Jones  
Bonnie Marie Jones  
Chaunetta L. Jones  
James Amos Jones  
Karen Waters Jones



Morgan Elizabeth Jones	Charles Herbert King Jr.	Julie Galloway Lanford
Rhondette Lenice Jones	John Gridley King	Marilyn Griffiths Lanphier
Todd Allen Jones	Ryan Scott Kingsbury	Lyle Wilkerson Lansdell
Catherine Samantha Jonker	Linda Marie Kinney	Charles Duane Larson
Daniel J. Jordahl	<i>In honor of Dr. Suzanne Landis</i>	Anne Johnston Lawrence
Joanne Marie Jordan	Tracy L. Kinsey	Kenneth & Rosemarie Lawson
Tania Jordanova	Sheila Marlene Kinty	Leslie J. Lawson
Surendra Bhargav Joshi & Charulata S. Joshi	J. David Kirby	Michael Thomas Lawson
Lauren Ashley Joyner	Jane McManus Kirk	Ava June Lay
James Mark Jurkovich & Stephanie Ann Molliconi	J. Michael Kirtz	Rachel Sara Lazar
Corey Andrew Kalbaugh	Russell S. Klingensmith	Benjamin Lebron
Norma Fox Kanarek	J Yvonne Rogers Knauff	Kerry Lamont Lee
James Stuart Kantor	Jacqueline Suzanne Knee	Soong Hyun Lee
Julie Karcis	Christopher F. Knud-Hansen	Jennifer Leeman
Leah Robinson Karpen	Matthew Allen Koch	Yvette Leger
Maureen T. Kartheiser	Keith Eric Kocher	Hugh Geoffrey Lemonds & Samantha Tozzi Lemonds
Andrew Adams & Elizabeth Walker Kasper	David & Ruth Koester	Donald Eric Lentzen
Mark Kassis	Racquel Elizabeth Kohler	Hannah Jozette Leonard
Linda Craven Kastleman	Rebecca Ann Kohler	Jennifer Anne Leonard
Janis Gail Kaufman	Carolyn Reid Kohn	Bonnie Rae Lesko
Leanne Kaye	Van Anthony Kollias & Sonja Robinson Kollias	Martin Frederick Less
Christine Hunt Kearsley	Lawrence David Kornreich	Lisa Ruth Letourneau
Julian Eugene & Barbara Keil	Lindsay Adam Kort	Teme Madelyn Levbarg
Betty Craven Kelchner	Bert Petty Krages II	Sue Levin
Connie Kelley-Sidberry	Denise Duhamel Kreb	Ronald Howard Levine
David Reid Kelly	Matthew Walter Kreuter	Julian Leigh Lewis
<i>In memory of Marcia Lynn Whicker</i>	N. Scott Kukshtel	Katherine McLaurin Lewis
Richard Dale Kelly & Beth F. Kelly	Robert Leonard Kunka & Alice Kirkman Kunka	Meghan Lindsey Lewis
Betty Kenan	<i>In memory of Susanne Lynas Moulton</i>	Shimena Ruth Li
J. Todd Kennedy	Sean Laane & Patricia Suzanne Weggel-Laane	Jiahe Liang
George & Frances Kerr	John Henderson Lacey & Carolyn Holcomb Harrell	Kim Maureen Lichtveld
Ann Kesler-Anterasian	Madison Paige Lackey	George Lawson Liggins
Joy Anderson Key	James Albert Lalumandier	Melvin Dale Lightner
Charlene Dickerson Kidd	Frank Warren Lambert Jr.	Lauren E. Lindblad
Brian Paul Kilgallen & Teresa Kilgallen	Louis C. LaMotte Jr. & Lila Jean LaMotte	Sharon Lindgren
John Jihoon Kim	Robert Joseph Landry	Seri Anne Link
Roy Jung Woo Kim	Joy Elizabeth Lane	Alice Strozik Linyear
Young S. Kim & Esther Kim	Michael Nelson Laney	Stuart Roger Lipsitz
Hoke Pollock Kimball		Sally Lynn Liska
Betty Frances King		Karen S. Lissy
		Shuaiqing Liu
		Xiao Fu Fu Liu
		John Llewellyn Lobdell

# DR. SARAH MORROW

## A scholarship established by her children honors her advocacy for maternal and child health

Rereading Dubose Heyward's *The Country Bunny and the Little Gold Shoes* was a fitting prerequisite to writing about Dr. Sarah Morrow.

In the timeless children's book, the mother of 21 baby bunnies triumphs through hard work and perseverance, superhuman organizational skills and an abundance of kindness, despite the prejudices of rather snobbish male rabbits. The country bunny's unlikely success parallels Morrow's own. A sole breadwinner with six young children and a husband who was ill, Morrow earned medical and public health degrees, becoming one of the most respected and effective administrators in the state of North Carolina and a crusader for women's and children's health.

Now, in gratitude and to honor their mother's contributions, her children have made a gift to the UNC Gillings School of Global Public Health so that others may prepare for illustrious public health careers. The Sarah Taylor Morrow Scholarship in Maternal and Child Health, established by Lynne Morrow Perrin, Sally Morrow Shelley, Thomas Lacy Morrow III, Frank Paul Morrow, Alice Morrow Dean and John Howard Morrow, will support maternal and child health students at Morrow's alma mater.

"We are very proud of our mother and what she has accomplished throughout her life and continues to accomplish even today as a pediatrician and public health professional," wrote Lynne Perrin, on behalf of her siblings. "Mom always placed high priority on children having good health and a good education. We – her children and grandchildren – established this scholarship to honor her and encourage others to learn about her life's work and embrace her ideals."

Morrow earned a medical degree from the University of Maryland in 1942 – at age 23 – and a Master of Public Health from UNC in 1959. As a clinician at the Guilford County (N.C.) Health Department, she established the department's groundbreaking Child and Youth Program, and soon became the department's first woman director. In 1976, she was appointed by Governor James Hunt Jr. as



PHOTO BY TOM FULDNER

Dr. Sarah Morrow

**"We are very proud of our mother and what she has accomplished throughout her life."**

**—LYNN PERRIN**

Secretary of the N.C. Department of Health and Human Services, again the first woman to serve in that capacity. Later, she served for more than 20 years as medical director for Electronic Data Systems.

Even in her 90s, Morrow has remained, her children say, "a tireless public health



### 17,500+ NORTH CAROLINA PRESCHOOLERS

and their teachers have learned about proper nutrition and active living through Dr. Dianne Ward's NAP-SAAC program ([www.napsacc.org](http://www.napsacc.org)).

advocate, working with the N.C. Citizens for Public Health and inspiring new generations of public health leaders through her continuing involvement with the Gillings School.”

“We are proud of Dr. Morrow and so grateful to her,” says Herbert Peterson, MD, Kenan Distinguished Professor and chair of the School’s maternal and child health department. “She is a true pioneer in the field and has made many important contributions over the years to our department and those we serve.”

—Linda Kastleman

## GIVING

To learn how your gift may be used to honor a mentor or loved one, contact the School’s Office of External Affairs at 919.966.0198, or visit [giving.unc.edu/gift/sph](http://giving.unc.edu/gift/sph).

Elise A. Lockamy  
Gary & Panthia Locklear  
Samantha Ruth Logan  
Christina B. Lomax  
Denise Heath Londergan  
Suzanne Elizabeth Long  
Diane Alicia Longstreet  
Roberta Benon Lopez  
Rhonda Lynn Lowe  
Macon Elizabeth Lowman  
Feng Luo & Zhihua Fan  
Edward William Lusk  
Gheorghe Luta &

Anca Dana Dragomir  
Pauline Rabon Lyna  
Kirkland Alexander Lynch  
Stacy Racine Lynch  
Thomas & Deborah Lynd  
Courtney Braswell Lyndrup  
Rebecca Leigh Mabe  
Norman Angus MacLeod  
Krista Giersch Maddigan  
Mary Sue Porter Hunter Maginnis  
Azra Mahmutefendic  
Michelle Alisa Mahoney  
Ann Marie Malarcher  
Jose F. Maldonado-Moll  
William Francis Maloney  
Khalil Hosny Mancy &

Patricia Worley Mancy  
Justice Allen Manning  
Ashley Yvonne Manos  
Carolyn Venice Howard Marcus  
Lewis Harvey Margolis  
H. Belle Potter Marks  
John William Marsh  
Ashley Marshall  
Edwin Cochran Marshall  
Christopher Sargent &  
Caroline Rowe Martens  
Patrick Martin  
Minni Nauhria Marwaha  
William Donald &  
Linda Ocker Mashburn

Katherine Pieper Mason  
Lisa Jane Mason-Faison  
Susan Marie Massaro  
Laurel Marston Mastro  
Timothy & Pradhana Mastro  
John Clyburn Matheson III  
Pamela Mathews  
Margaret Amanda Mathis  
Whitney Brook Matson  
Denise Louise Matthews  
Stanley Theodore Mavrogianis  
Lisa Renee Maxwell  
Amelia Maytan  
Jill Ann McArdle  
Timothy Ann McBride  
Donald Edward McCall  
Judy Honbarrier McCall  
Timothy George McCarthy  
Moiria Stephanie McCloskey  
Gene Frederick McCoy  
Kristin Renee McCullough  
Hazel Gilchrist McDowell  
Shirley Jackson McDowell  
Rebecca Wilson McGonigal  
Margaret Harrington McHenry  
David Andrew McKay  
Lisa Ann McKay-Chiasson  
Lee Nix McKenna  
Richard Warren McLain  
Sarah Elizabeth McLellan  
A. Darlene Gifford McLeod  
Daniel Taylor McMillan  
Delores Poole McNair  
Kay McNeill-Harkins  
Margaret Elizabeth Meador  
Karleen Ruth Meadows  
Jorge Villanueva Medina  
Edward F. Meehan  
Anne Ruth Meibohm  
Michelle Marie Mello  
Bruce Edward Melosh &  
Sara Ebener Melosh  
Arthur Richard Melton  
Paula Harris Mendelsohn



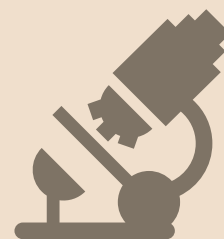
Jason C. & Dara Daneen Mendez  
James Chamblee Meredith  
Robert Scott Merolla  
Edythe Green Merritt  
Claire-Helene Mershon  
Beverly Gail Metchock  
Margo Ilene Michaels  
Barbara Michalak-Reilly  
Roberta Milar  
Barry Alan Miller  
Christopher Perry Miller  
Eric Anthony Miller &  
Cheryl Lynne Miller  
Mark Elliott Miller  
Paul Matthew Miller  
Claire Ward Mills  
Elizabeth Beckner Mills  
Jason Christopher &  
Elizabeth McAllister Mills  
Leslie Painter Mills  
*In honor of Dr. Jo Anne Earp*  
Dina Miyoshi  
*In memory of Dr. Robert Millikan*  
Lorraine Simone Mobarak  
Christine Lorraine Moe  
Khadija Jamal Jafar Mohamed  
David Charles Momrow  
Paul Edward & Rose Wilcher  
Monahan  
Harsha Mondal  
Emily Kathryn Monds  
Edward Benjamin Money Jr.  
Elizabeth Claire Montague  
Dennis Joseph Moore  
Jonathan David Moore  
Laura Kaye Moorhead  
Brett W. & Vicki McIntosh Moran  
Victoria Stover Mordecai  
Leslie Ann Morris  
Paula Katheryn Morris

Marian Vanlandingham Moseley  
Malana Keiko Moshesh  
Kathryn Reumann Mullen  
Jennifer Leigh Mullendore  
Robert Wesley Mullennix  
Kenneth A. Mundt  
Colleen Marie Murphy  
Michael Ben Musachio  
Erin Marie Musiol  
Sarah Christene Mye  
Irving Nachamkin  
Aimee Kirkman Nakhle  
William James Neil  
Mary A. Nelson  
William Bernard Naser  
Catherine Barrett Newhouser  
Amy Hoi-Mei Ng  
Jeffrey Huu Nguyen  
Nicholas Giao Nguyen  
Evelyn Frost Nichols  
Katherine V. Nichols  
Joy Haworth Nicol  
Sandra Turner Noll  
Felicia C. Noonis  
Richard Recher Nugent  
Robert Percival &  
Aubrey Christie Nutter  
Patrick Joseph O'Connor  
Jane Marie O'Doherty  
Rudolph Wilhelm Oeben  
Ann Marie O'Hale  
Obinna Jude Okeke  
Byron Toyota Okutsu  
C. Marc O'Neal & Heidi Sink O'Neal  
Marie Sylvia O'Neill  
Louis Joseph Orban  
Kathryn Jordan Ort  
Kate Orville  
Sara McMurray Osborne  
Nora Hennessy Osowski  
Nancy Dasher Oswald  
Kevin John O'Toole  
Bernice Green Otudeko  
Alycia Karoline Overbo

Abayomi Iroroye Owei  
Koyejo Abiodun Oyerinde  
Karishma Kamlesh Oza  
Alice Kinsman Page  
Richard & Theresa Paice  
I-Jen Pan  
Jennifer M. Pan  
Ariana Pancaldo  
Shveta Dhiren Pandya  
Carol Blum Papillon  
Patricia Diane Parker  
Sheryl Lynne Parker  
Kim Parks  
*In memory of Ms. Linda King*  
Robert Thomas Parrott  
Edward A. Pascarella  
Mallie Jether Paschall IV  
Paul Pasquarella  
*In memory of Susanne Lynas*  
*Moulton*  
William Joseph Pate  
Amy Rameshchandra Patel  
Presha D. Patel  
Padmaja Patnaik  
W. Ward Patrick  
Merritt Townsend Patridge  
Navinchandra Suresh Pawaskar  
R. Flynn Paylor Jr.  
Jared William Peacock  
Jim L. Peacock  
Laura Pearson  
Roger Lawrence Pedersen  
Christine Pederson  
Everall Aiken Peele  
Barbara Jane Pellin  
James Francis Penfold  
Jessie Valentine Pergrin  
Lars David Perlmutter  
Henry B. Perry III  
Donald Brian Personette &  
Deborah Ann DiGilio  
David Pesci  
Katherine Ann Peterman  
Howard August Peters

Edith Tannenbaum Peterson  
 Gail Boren Peterson  
 Charles J. Petrillo Jr.  
 Sophia Sirokay Petrusz  
 Eric Steven Pevzner &  
 Emily Lynn Green-Pevzner  
 Suzanne Pfeifer  
 Robert W. Phelps  
 Debra M. Phillips  
 Diane Fistori Phillips  
 Lynette S. Phillips  
 Mikal Joseph Phillips  
 Richard Norman Phillips  
 Vern Pidcoe  
 Martha Piedrasanta  
 Elizabeth Bryan Pierce  
 Amanda Anne Piltzer  
 Pinehurst Geriatrics PA  
 Marcy Leigh Policastro  
 Alice Kelton Pollard  
 Ricardo Alberto Pollitt  
 Barbara Garrish Pollock  
 Meg Lanchantin Pomerantz  
 Lauren Alissa Poor  
 Megan Proctor Popielarczyk  
 Maurice Benjamin Popkin  
 Cedric W. Porter Jr.  
 Kenneth Michael Portier  
 Bradford Cole Powell &  
 Sabrina Neill Powell  
 Mary Beth Powell  
 Tiffany Michele Powell  
 William Stewart Powell  
 Stephen Praissman  
 Marva Laverne Mizell Price  
 Barbara Alison Prillaman  
 Timothy Wayne Prince  
 Cynthia Johnston Probst  
 Earcel Gene Proctor  
 Alan & Nancy Easter Proia  
 John Chester Pulaski Jr.  
 Elizabeth Larsen Pullen  
 Cheryl Lynn Pulliam  
 Elizabeth Peyton Purcell

Jeffrey Charles &  
 Laura Goettinger Qualls  
 Noreen Lareda Qualls  
 Judith Rose Qualters  
 Richard Douglas Quattrone  
 Alan J. Rabideau  
 Norman DePue Radford Jr.  
 Polly Hathaway Raible  
 Chirag Dipak Rajpuria  
 Susan Randolph  
 Myrnice McCormick Ravitch  
 Kimberly Jane Ray  
 Peter Cameron Raynor  
 Jeannie M. Reardon  
 Linda Jean Redman  
 Alison Chapin Reed  
 Bianka Monique Reese  
 Elizabeth Regan  
 Jonathan David & Sandra Cook Reid  
 Linda Schoof Reilly  
 Chris Joseph Reimer  
 Donald William &  
 Karen Hillix Reinfurt  
 Alice Deemer Remigailo  
 Wolfgang Resch &  
 Leah Elizabeth Mechanic  
 Lawrence Gerald & Carol M. Retchin  
 Heidi Winn Reynolds  
 Mary Louise Reynolds  
 John Kimber Rezen  
 Sheryl J. Rhodes  
 Victor Gregg Rhodes Jr.  
 Sandra Rhyne  
 Laura Dula Richard  
 Cathy Rachelle Richards  
 Russell Howard Richardson  
 Brian D. F. Richmond  
 Martha Cornwell Riddell  
 Alissabeth Kay Ridenour  
 Kathryn Maclin Riley  
 Sheila Risley  
 Kelly Elizabeth Ritrievi  
 Glenn Donald Rives  
 Marilyn Colby Rivkin



#### **\$50M GIFT FROM DENNIS GILLINGS AND JOAN GILLINGS**

has funded dozens of projects based in N.C., including 18 Gillings Innovation Labs and 53 Gillings Merit Scholars.

Susan Wenger Robbins  
*In honor of Dr. Miriam Labbok*  
 Robin G. Robertson  
 Kristof Daniel Robinson  
 Whitney Ragan Robinson  
*In memory of Dr. Robert Millikan*  
 Paul Vincent Rocereto  
 Eric Alan Rodgman  
 Jimmy Lafon Rogers Sr.  
 Jacky Ann Rosati Rowe  
*In memory of Dr. Parker C. Reist*  
 Mark Jamison Rosch  
 Shyanika Wijesinha Rose  
 Allison Beth Rosen  
 Barbara Rosenau  
 Stephen James Rosenbaum  
 Donald L. Rosenstein  
 Alton Glenn Ross &  
 Frances Turner Ross  
 John A. Ross  
 Pamela Kim Ross  
 Rachel May Ross  
 Marcia Susan Roth  
 Lynne Schachner Roux  
 Ryan Rowe  
 Amy Michelle Rowland  
 Diane Rowley  
 Nina Tiglio Ruckes  
 Joe Rudek  
*In memory of Dr. Ed Kuenzler*

Douglas James Rupert &  
Amy Ehrenfeld Rupert  
Maria Citarella Russell  
Susan Russell  
Mark W. & Deborah Russo  
Karen Lee Rust  
Brent Eugene Rutland  
Marjorie Rose Sable  
Carol Wendt Sackett  
Yoram Sami & Suzanne Gutter Gilboa  
Melissa Rachel Sanchez  
Jeffrey L. Sanders & Carol D. Sanders  
Mary Mann Sappenfield  
Sara Moir Sarasua  
Joan Davis Sather  
Peter Lawrence Saviteer &  
Susan Mertz Saviteer  
Jennie Perey Saxe  
Tim Scales  
Anne Rose Schaefer  
James Mitchell Schaeffer  
Daniel Solomon Schechter  
Jerald Scott Schindler &  
Sharon M. Schindler  
Susanne Schmal  
Sandra Willa Schoenfisch  
Sarah Elizabeth Schulwitz  
Richard Michael Schulz &  
Marcia Anne Coster-Schulz  
Jennifer Elaine Schuster-Jaeger  
Todd Andrew Schwartz  
Stefanie Mei Schwemlein  
Don & Kay Scott  
Edgar Franklin Seagle  
James E. Sells  
Jane Barbara Serling  
Frederick William &  
Carolyn Miller Sexton  
Mark Alan Sgan  
Neha Bhupendra Shah

George Alan Shaler &  
Jill Ellen Rosenthal  
Carol J. Shannon  
Jennifer Bourbina Shannon  
Daniel T. Shaughnessy  
S. Drusanne Shaulis  
Joyce Q. Sheats  
John Lewis Sheets  
Judene Anne Shelley  
Christine Delalio Shiffer  
Robert James Shimp  
Stanley Allen Shulman  
Tamara Tickel Shusterman  
Carl Michael Shy



**\$5.5 MILLION**

awarded to Dr. Dorothy Cilenti to  
provide onsite and online training  
and technical assistance for N.C.  
Title V agencies involved in the  
Affordable Care Act

Joseph Edward Sickles II  
George William Siebert III  
Ashley Elizabeth Sigmon  
O. J. Sikes III  
Robert S. Silvers &  
Penelope Jeanne Padgett  
Phillip Donald Simmons  
Shakia Hardy Simmons  
Karen L. Simons  
Neal R. Simonsen  
Barbara Pawlik Simpson  
Elizabeth Hamerschlag Sims  
Roberta Singal

Thomas Freeman Slaughter  
Camille Smith  
Claudia May Smith  
Phillip Brian Smith  
Samantha Jeanne Smith  
Stephen Michael Smith  
Susie Smith & Nate Cooper  
Wanda Boger Smith  
Grady King & Mary Edwards Snyder  
Patrick Drexel Snyder  
Taylor Marie Snyder  
James Michael Snypes Jr.  
Justin Robert Sodoma  
Sole Source Engineering P.C.  
Crystal Sims Sossoman  
Katherine Nicole Southers  
Carol Kozlowski Spangler  
Yvonne Hebert Sparling  
Hannah Logan Spector  
Joyce Annette Spencer  
John J. Spivey  
C. Jean Spratt  
Laura Marie St Martin  
J. Thomas Stack  
Elisabeth Harris Stamm  
Capitola Louise Stanley  
John Haywood Stanley  
Barbara Ellen Starrett  
Jane Patricia Staveley  
Doran Webster Stegura  
Cheryl Randy Stein  
Marilyn Mackson Stein  
Seth Michael Steinberg  
Cecilee Page Steinmetz  
Timothy John Stephens  
Constance Ritz Stern  
Betsy Van Belois Stikeleather  
Mark Stephen Stinneford &  
Karen Youngblood Stinneford  
Stephen Ronald Stoddard  
Rodoljub Stojiljkovic  
Carol Elizabeth Stokes  
Ada Uhland Storm  
Tara Lee Stout



Carmesia Amoy Straite  
 Pamela McLendon Strand  
 Justine Strand de Oliveira  
 G. William Strein & Sandra Strein  
*In honor of Dr. Thomas Ricketts*  
 G. Thomas Strickland Jr. &  
 Anna Garst Strickland  
 Charles F. Stroebel  
 Taylor Hamer Stroud &  
 Sara Moore Stroud  
 Kelly Kathryn Strutz  
 Frances Mae Strychaz  
 Elizabeth Roselle Suttle  
 Mary Elizabeth Hibbs Sutton  
 David John Svendsgaard  
 Colleen Svoboda  
 Angela Wooten Swicegood  
 Brian C. & Kara Anne Taff  
 Leigh Anne Tally  
 Yao Tang  
 Sylvia Mullins Tart  
 Douglas James Taylor  
 Emily Catherine Taylor  
 Irma I. Taylor  
 Sylvester Taylor &  
 Donna Robbin Dinkin  
 Christine Bahia Tenekjian  
 Sarah Brill Thach  
 Francis Curtis Thayer Jr.  
 Gene Dennis Therriault  
 Jeremy & Amy Thomas  
 Kent William &  
 Robin Wilkerson Thomas  
 Monecia Kiser Thomas  
 Jennifer Michelle Thomasen  
 Caroline Avery Thompson  
 Mark Gerard Thompson &  
 Irene Margaret deGroot  
 Shirley Jean Thompson  
 Alice Raymond Thomson  
 Julie Poh Thurlow  
 Lee Tippe & Carol Sue Hindman Tippe  
 Mary Ann Tomasiewicz  
 Forrest Glenn Tompkins

David Cheng-Da Tong  
 Christopher Paul Toumey &  
 Kathryn Jon Luchok  
 Charlie Tran  
 Duy Trong Tran  
 Thomas Thien Tran  
 Patricia Broyhill Trice  
 Aaron Trubman  
 Joan Meister Truby  
 Heather M. Trudeau  
 Annie Wang Tu  
 Jean Walker Tucker  
 Thomas Harley Tucker II &  
 Stephanie Ann Powelson  
 Craig David & Patricia Ann Turnbull  
 Lou Flippin Turner  
 Mark Andrew &  
 Melissa Norman Turner  
 Carl D. Tuttle  
 Emily Thomason Tyler  
 Sheron Garris Tyndall  
 Laura CaJacob Ugokwe  
 Margaret Bliss Umphres  
 Patricia Miller Unruh  
*Unknown Donor Gifts*  
 Kimberly Ann Urban  
 Jay Adam Ure  
 Antti Vahakainu & Mindy Weed  
*In honor of Mr. Brett Weed*  
 Lisa Ann Valent  
 Marian Raidl Van Nierop  
 Carolyn Elizabeth Vance  
 Paul Joseph Vander Straeten  
 Catherine P. Vangellow  
 Brenda Vasquez  
 Rupa Vass  
 Patricia Long Vaughan  
 Gracey Vaughn  
 Lakshmi Pradeepa Vennam  
 Joel Ellison Vickers  
 Nadja Alexandra Vielot  
 Thomas & Frances Vitaglione  
 Edward Harris Wagner  
 Cynthia Sue Walker

Elizabeth Jefferson Walker  
 Hilda Lee Walker  
 Amelia Susannah Wallace  
 Bobbi Wallace  
*In honor of Eleanor Emslie*  
 Bruce Davis Wallace  
 Dennis Dale Wallace  
 Ralph Gene Wallace  
 Susan Wall Wallin  
 Emmanuel Benjamin Walter  
 Georgia Ann Walter  
 Sheryl Furfaro Walters  
 Ann Marie Lee Walton  
 Beverly A. Warden  
 McWilson Warren  
 Victoria Motley Washington  
 Melanie R. Wasserman  
 Amanda Reynolds Waters  
 Nancy Burrow Watkins  
 B. Peyton Watson  
 Nancy Margaret Watson  
 Kenna Stephenson Watts  
 Sharon Jean Wayne  
 Christopher Lee Wearmouth  
 Mary Elizabeth Mulvey Webb  
 Briana Monet Webster  
 David Bruce Webster Jr. &  
 Connie Gayle White  
 Elizabeth Megan Weinstein  
 Scott Allen Welch  
 Roland Willis Wentworth  
 Virginia Lindley Wereszynski  
 James Jason West  
 Jane Mandeville Wetsel  
 Catherine Whedbee White  
 Elizabeth Anne White  
 Mark Charles White  
 Todd Patrick Whitehead  
 Daniel Bennett Whitesides  
 Joanna Louise Whyte  
 Evelyn Booker Wicker  
 Jeffrey Paul Wierse  
 Allen James Wilcox  
 Sophie Marie Wilderotter

Noel Hance Wiley  
 Andra Lea Wilkinson  
 Andrew David Williams  
 James Earl Williams  
 Marie Phillips Williams  
 Zakiyah Kiara Williams  
 Bruce G. & Janet Horsley Willis  
 Marilyn York Willis  
 Farra Martin Wilson  
 Fletcher Nelms Wilson &  
   Catherine Alexander Wilson  
 Richard Burton Wilson  
 Theresa Russ Wilson  
 Thomas Armand Wilson  
 Susan A. Winsor  
 Cara B. Winstead  
 Robert Oakley Winters  
 Chris Alan Wise  
 Cameron Robert Wolfe  
 Holly Mae Wolff  
 Eva Higdon Wood  
 Mary Susan Woodruff  
 Rebecca Claire Woodruff  
 Aimee Whitney Woods  
 James Sterrett Woods III &  
   Nancy Fugate Woods  
 Ayaba G. Worjolah  
 Linda Kay Worman

## MOTHER'S DAY TRIBUTES

Mrs. Margaret Smith Daughtry  
 BY GORDON L. DAUGHTRY

Marjorie Downs Guild  
 BY PRISCILLA GUILD

Ms. Dorothy Lee  
 BY JOSEPH LEE

Mrs. Frances Salak  
 BY JERRY SALAK

Gwendolyn Farmer Lee Baugh  
 Beard  
 BY JULIE DE CLERQUE

Caroline Lee Beard De Clerque  
 BY JULIE DE CLERQUE

Wayne Edward Wormsley  
 Betty Hinton Worthy  
 John David Wray  
 Mary Haney Wright  
 David C. Wu  
 Susan Reynolds Wyatt  
 Jane Godwin Wydra  
 Karen Dawson Yaeck  
 Sirin Yaemsiri  
 Jingzhen Yang  
 Yong Yang & Xiaolei Zhou  
 Allen Yarinsky  
 Feng Ye & Jean Pan  
 Alan Nelson Young  
 Craig Matthew &  
   Suzanne Unger Young  
 Martha Royster Young  
 Samina Yunus  
 Arnold & Maryanne Zaks  
*In memory of Joan Rimer*  
 Julie Zangari  
 Stacey Molinich Zee  
 Judy Teresa Zerzan  
 Zhi Zhong  
 Katherine Shelden Ziegler  
 Sara Zizzo  
 Tracy L. Zontek  
 Bin Zou

Every gift to UNC Gillings School of Global Public Health is vitally important and deeply appreciated.

We have made every effort to ensure the accuracy of our Honor Roll lists and regret any errors or omissions.  
 To report an error, please contact Susie Smith at [susies@email.unc.edu](mailto:susies@email.unc.edu).

# 2014 SCHEDULE of ANNIVERSARY EVENTS

CHAPEL HILL, N.C.  
Saturday, March 1

## Minority Alumni Reunion

All alumni and friends  
are welcome.

Location to be determined

Hosted in conjunction with the  
School's 35th annual Minority  
Health Conference

Learn more at  
[minorityhealth.web.unc.edu](http://minorityhealth.web.unc.edu).



BALTIMORE, MD.  
Monday, March 17

## Alumni event, hosted by UNC Department of Biostatistics

Baltimore Marriott  
Waterfront Hotel

Held in conjunction with the  
Eastern North American Region/  
International Biometric Society  
Conference

CHICAGO, ILL.  
Tuesday, March 25

## Alumni event, hosted by the UNC Department of Health Policy and Management

Held in conjunction with the  
American College of Healthcare  
Executives

CHAPEL HILL, N.C.  
Thursday, April 10

## Speaker: Greg Allgood, PhD

School alumnus and former  
director of Procter and Gamble's  
Children's Safe Drinking Water  
Program

6 p.m. – 46th annual Foard  
Lecture

7 p.m. – Reception

William and Ida Friday Center  
for Continuing Education

Selected departmental events  
begin at 4 p.m.

Visit [sph.unc.edu/foard](http://sph.unc.edu/foard).

WASHINGTON, D.C.  
Tuesday, April 29

6:30 p.m. - 8:30 p.m.

National Geographic Museum  
at Explorers Hall  
17th and M Streets, NW

Learn more at [tinyurl.com/nationalgeographicmuseum](http://tinyurl.com/nationalgeographicmuseum).

MARK YOUR  
CALENDARS!



## Fall receptions in Charlotte, Atlanta and Boston brought together alumni and friends.

On the back cover, clockwise from top left: Byron Bullard, Mary Webster and Laura and Fred Brown at the Levine Museum of the New South in Charlotte; Jamal Jones, Collin Lane and Ben Buchanan renew acquaintances in Charlotte, N.C.; Co-hosts Judy and Rich Vinroot celebrate with Dean Barbara K. Rimer in Charlotte; Larry Kupper, Joan Gillings, Dean Barbara K. Rimer, and Joy and Chet Douglass celebrate the announcement in Boston of the Douglasses' gift of a new Distinguished Professorship in Dental Public Health; and Cynthia Cassell and Stephen Marshall enjoy The Carter Center in Atlanta.



Left to right: Michael Tarwater, Fred Brown, Joe Piemont and Katie Kaney of Carolinas HealthCare System host the School's 75th Anniversary kick-off Reception in Charlotte, N.C.





UNC  
GILLINGS SCHOOL OF  
GLOBAL PUBLIC HEALTH

*The UNIVERSITY  
of NORTH CAROLINA  
at CHAPEL HILL*

CAMPUS BOX 7400  
CHAPEL HILL, NC 27599-7400

Nonprofit  
Organization  
US Postage  
**PAID**  
Permit #177  
Chapel Hill, NC



BE A PART  
OF OUR  
**75<sup>th</sup>**  
*Anniversary*



### ***Celebrate!***

At events throughout  
the country

### ***Engage!***

At reunions, on UNC  
service days

### ***Invest!***

In scholarships, professorships,  
the Annual Fund and so much more...

LEARN MORE ON INSIDE BACK COVER AND AT  
*[sph.unc.edu/alumni/75](http://sph.unc.edu/alumni/75)*.

