

FOR THE THIRD YEAR IN A ROW, UNC GILLINGS SCHOOL OF GLOBAL PUBLIC HEALTH HAS BEEN ABLE TO DESIGNATE A PORTION OF ITS ANNUAL FUND FOR SCHOLARSHIP ASSISTANCE. THIS YEAR, EACH OF 16 OUTSTANDING SCHOLARS — TWO FROM EACH ACADEMIC UNIT — RECEIVED \$5,000 TOWARD THE COST OF GRADUATE STUDY AT UNC.

THE ANNUAL FUND TRADITIONALLY HAS BEEN ONE OF THE MOST POPULAR WAYS TO SUPPORT THE SCHOOL AND ITS PUBLIC HEALTH INITIATIVES. PLEASE GIVE AS GENEROUSLY AS YOU ARE ABLE.

FOR MORE INFORMATION ABOUT ANNUAL FUND SCHOLARSHIPS, VISIT WWW.SPH.UNC.EDU/GIVING, OR CONTACT JERRY SALAK AT JERRY.SALAK@UNC.EDU OR (919) 966-0198.

Your gift to the

ANNUAL FUND

Can make a difference in the lives of students like these



Obafunto Abimbola
Public Health
Leadership Program



Emily Butler
Biostatistics



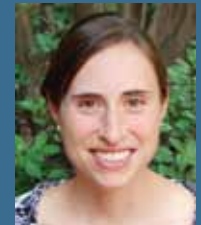
Colin Cameron
Environmental
Sciences
and Engineering



Mugdha Gokhale
Epidemiology



Chelsea Kolander
Health Behavior and
Health Education



Katie Lesko
Epidemiology



Wendy Marth
Environmental
Sciences
and Engineering



**Florence
Masese-Amadi**
Maternal
and Child Health



Jill Mead
Health Behavior and
Health Education



Quang Pham
Public Health
Leadership Program



Mysha Sissine
Health Policy
and Management



Lindsey Smith
Nutrition



Dalia Stern
Nutrition



Jasmine Stringer
Health Policy
and Management



Kathleen Tedford
Maternal
and Child Health



Lia Weiner
Biostatistics