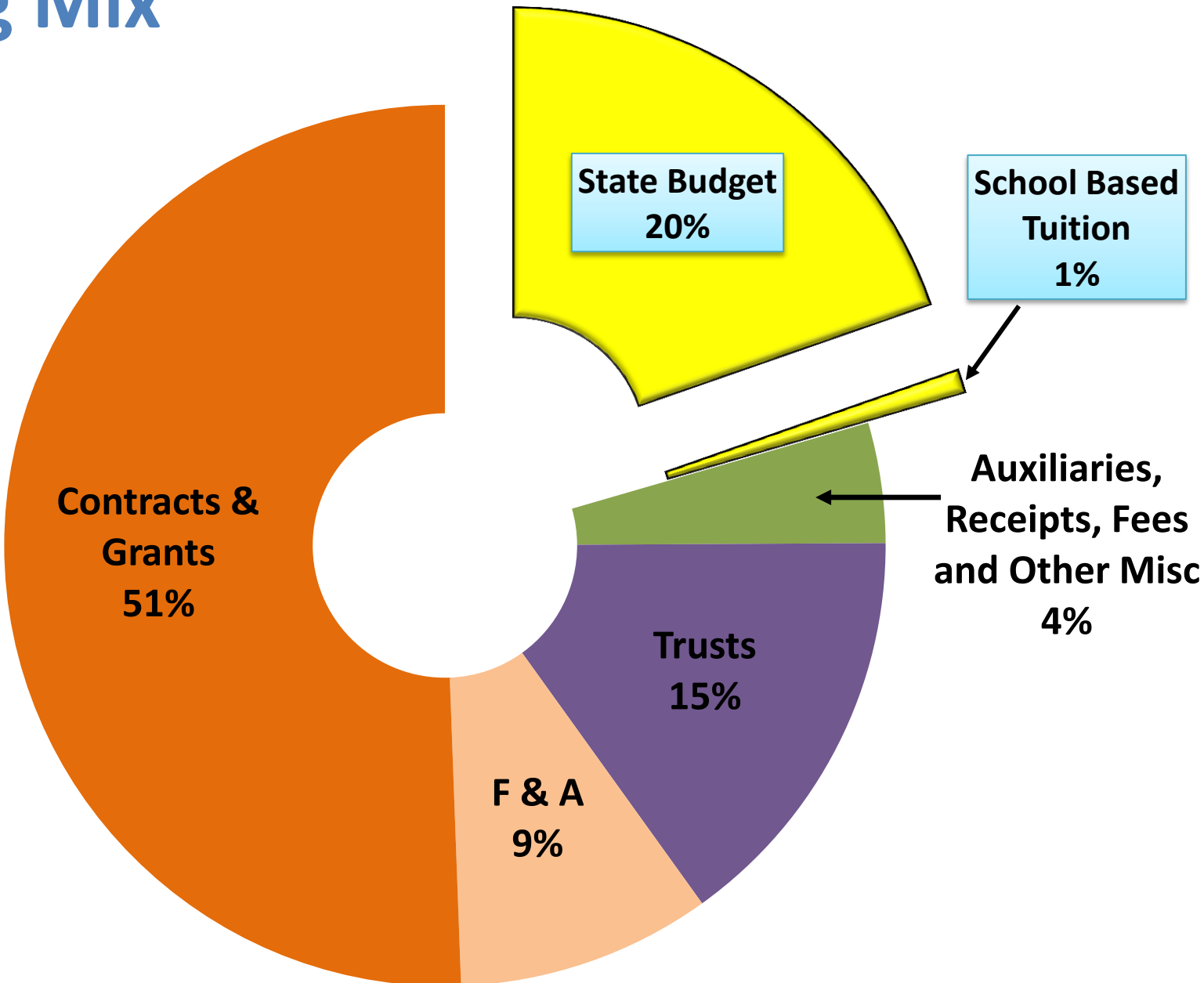


SPH Finances: Deep Dive State Resources

Faculty-Staff Meeting

April 2014

SPH Funding Mix



5 Year Averages Percent of Funds by Source

SPH FY2013 Sources & Uses

In Millions

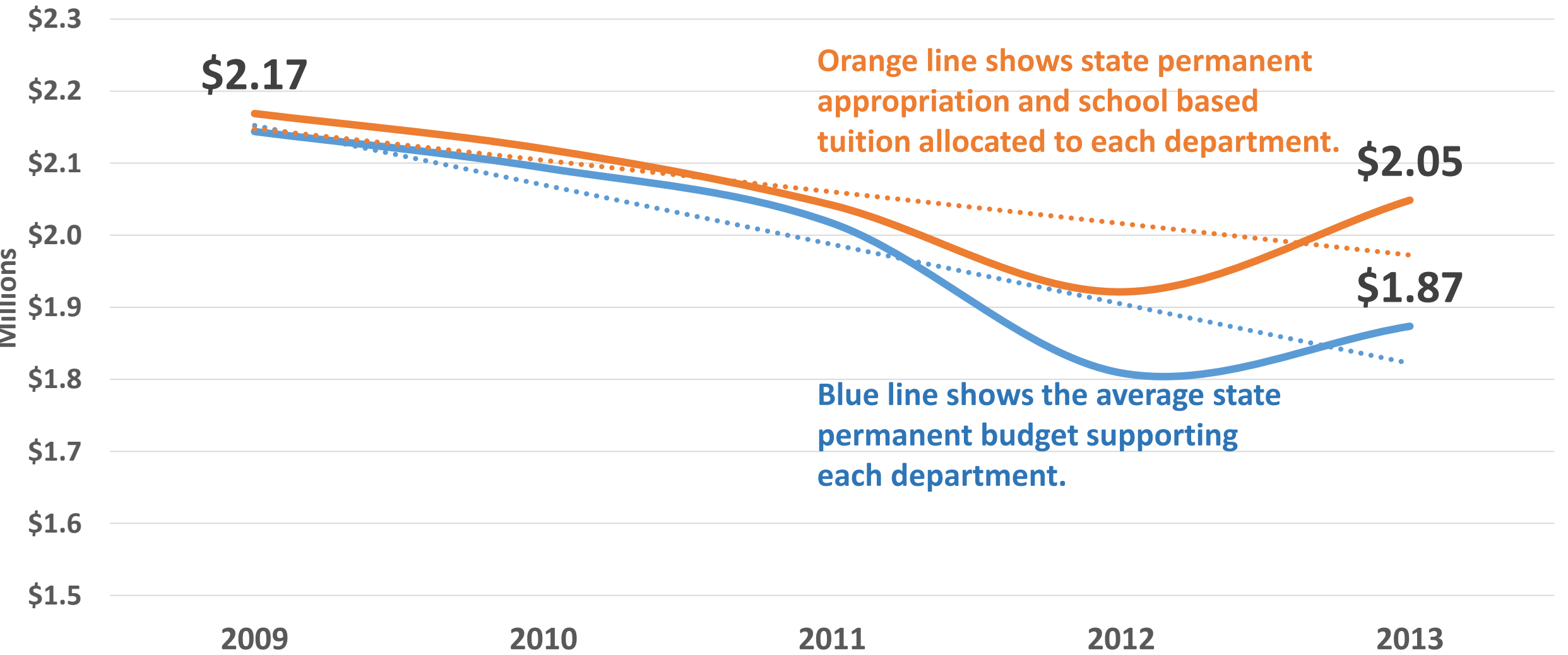
Sources

State Permanent Appropriation	\$ 19
School-Based Tuition	\$ 2
State Temporary (fringe benefits)	\$ 6
Indirect Cost Recovery (“IDCs, “F&A” or “Overhead”)	\$ 11
Contracts & Grants (“Directs”)	\$ 68
University Trusts	\$ 17
Foundation Trusts	\$ 2
Auxiliaries, Receipts, Fees & Other Services	\$ 7
Total	\$ 132

Uses

Compensation	\$ 68
Consulting & Contractual Services	\$ 1
Student Aid and Grants	\$ 6
Other Grants	\$ 20
Operations	\$ 14
Capital	\$ 1
Future Commitments -- Restricted & Unrestricted Funds	\$ 22
Total	\$ 132

State Sources: The “Average” Department



\$2.17

Orange line shows state permanent appropriation and school based tuition allocated to each department.

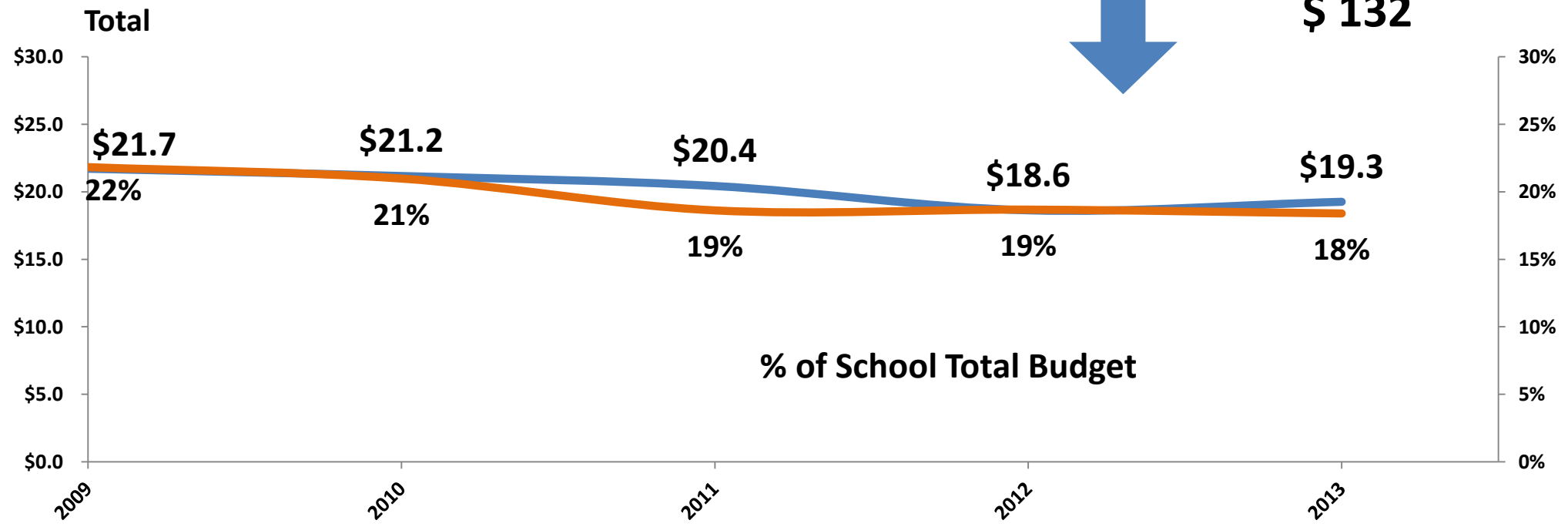
\$2.05

\$1.87

Blue line shows the average state permanent budget supporting each department.

FY2013 Sources: State Appropriation

	<u>Millions</u>
State Permanent Appropriation	\$ 19
School-Based Tuition	\$ 2
State Temporary (fringe benefits)	\$ 6
Indirect Cost Recovery	\$ 11
Contracts & Grants	\$ 68
University Trusts	\$ 17
Foundation Trusts	\$ 2
Auxiliaries, Receipts, Fees & Other Services	\$ 7
Total	\$ 132





- **Receives state appropriation from Legislature**
- **Board of Governors determines allocation to UNC-Chapel Hill.**



**THE UNIVERSITY
of NORTH CAROLINA
at CHAPEL HILL**

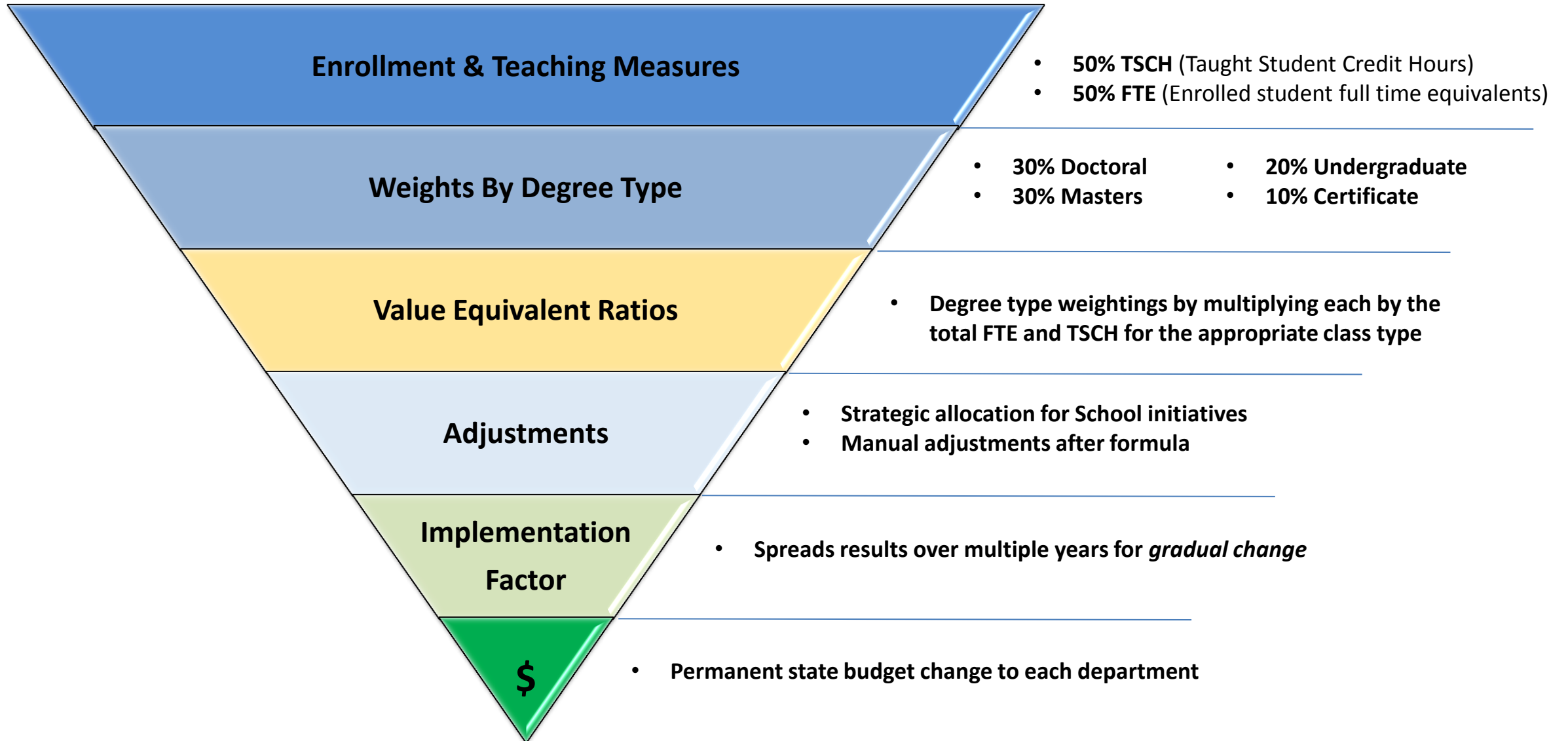
- **Provost's Office determines allocations to schools.**
- **No formula is used.**
- **Maintaining enrollment or enrollment growth is important.**



UNC
GILLINGS SCHOOL OF
GLOBAL PUBLIC HEALTH

- **Dean, Chairs and PHLP director refined SPH state budget allocation model over ~18 months.**
- **Allocation model aligns state budget & teaching activity (measured by TSCH and FTE).**
- **Over the last 5 years, SPH has received cuts except in FY2013.**

SPH State Budget Allocation Model Components



FY2013 Sources: School Based Tuition

Millions

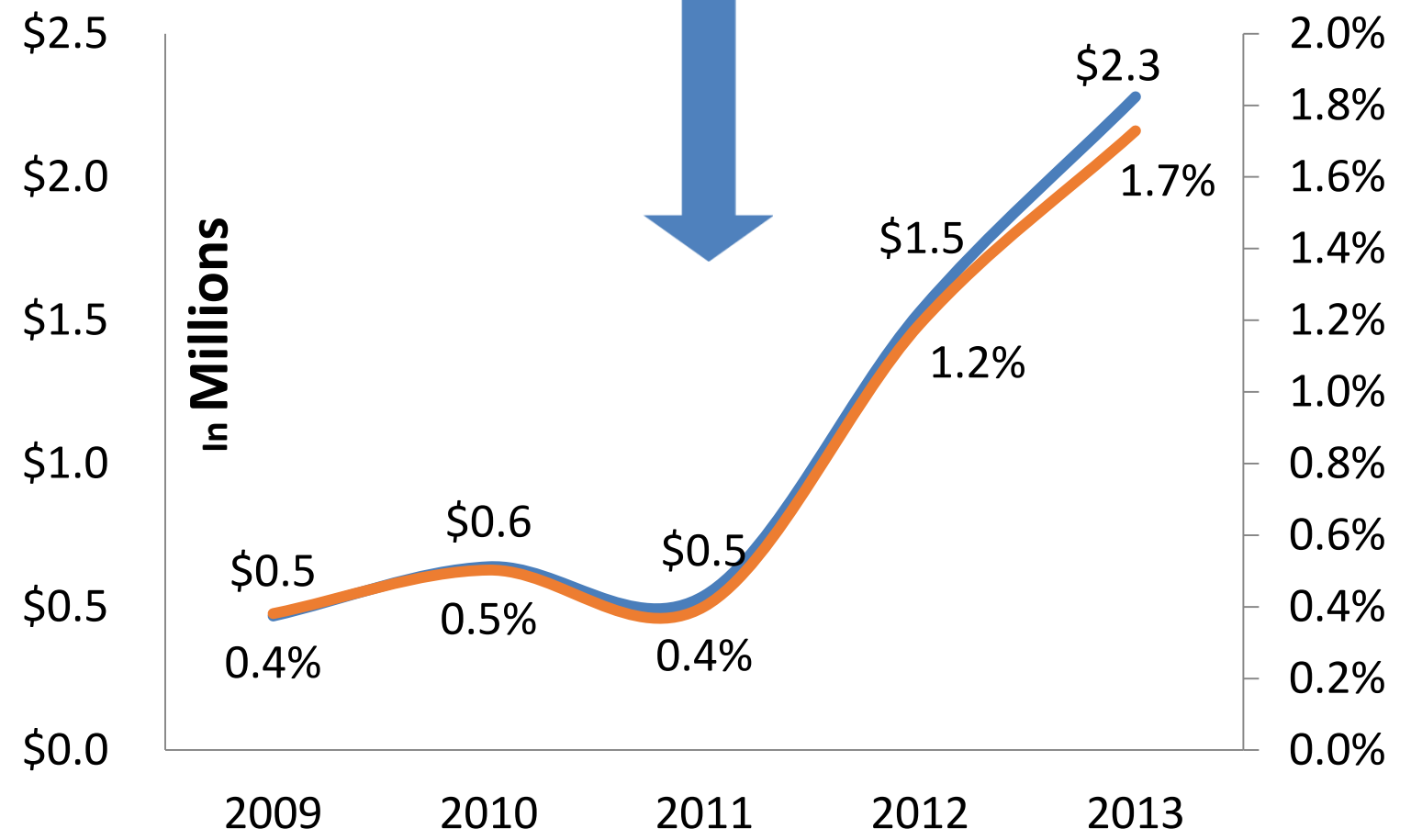
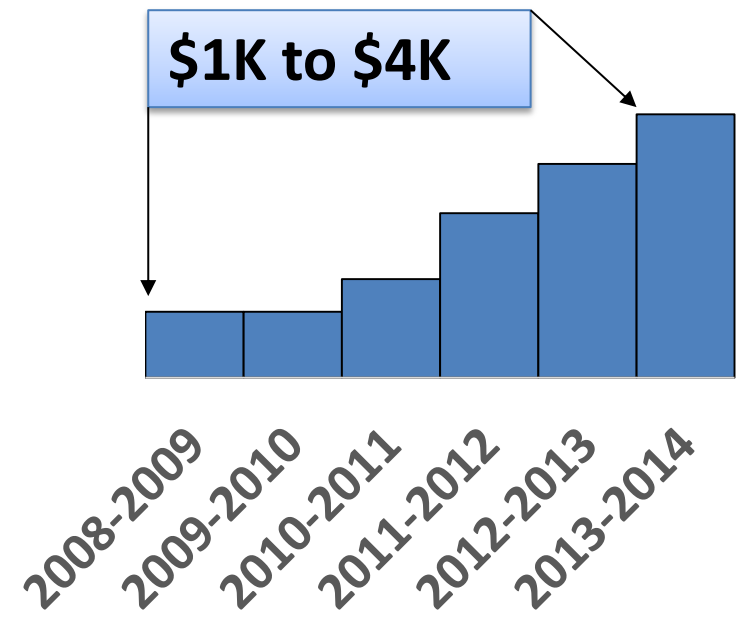
State Permanent Appropriation

\$ 19

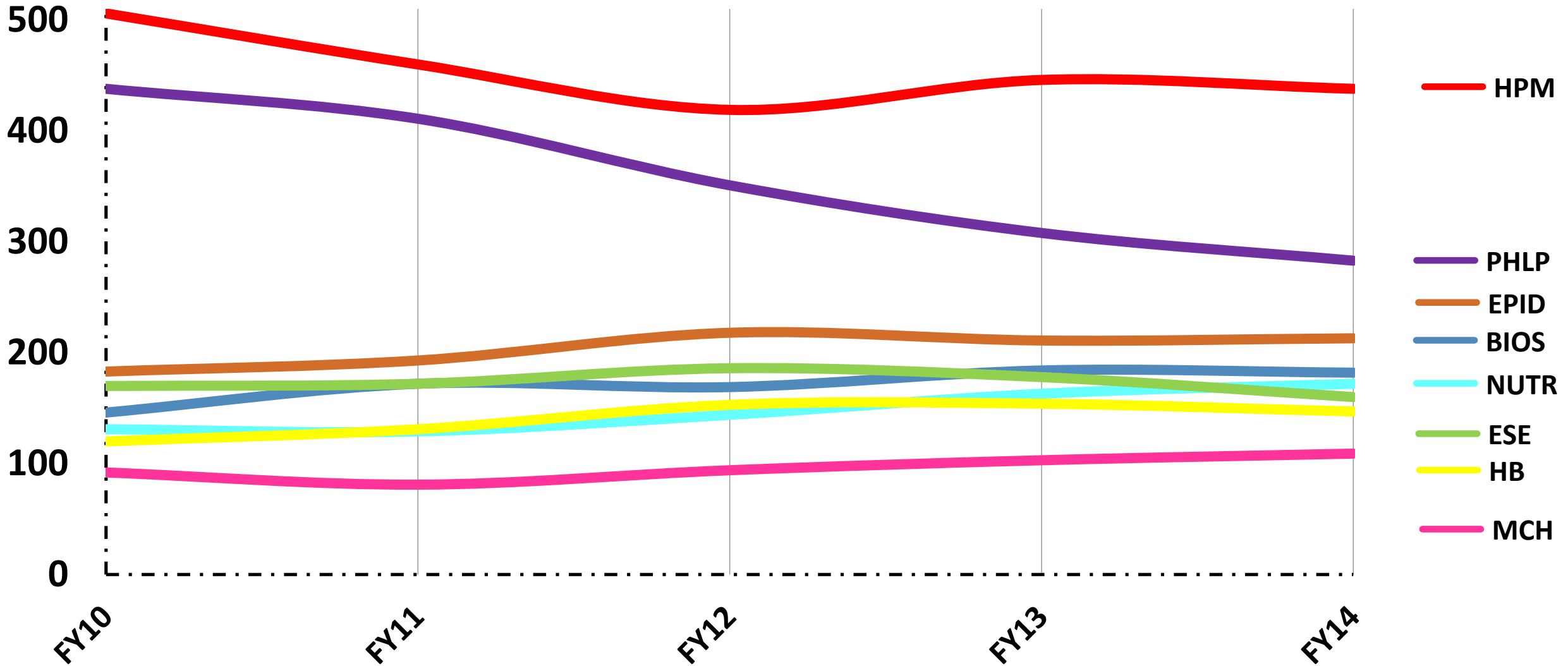
School Based Tuition

\$ 2

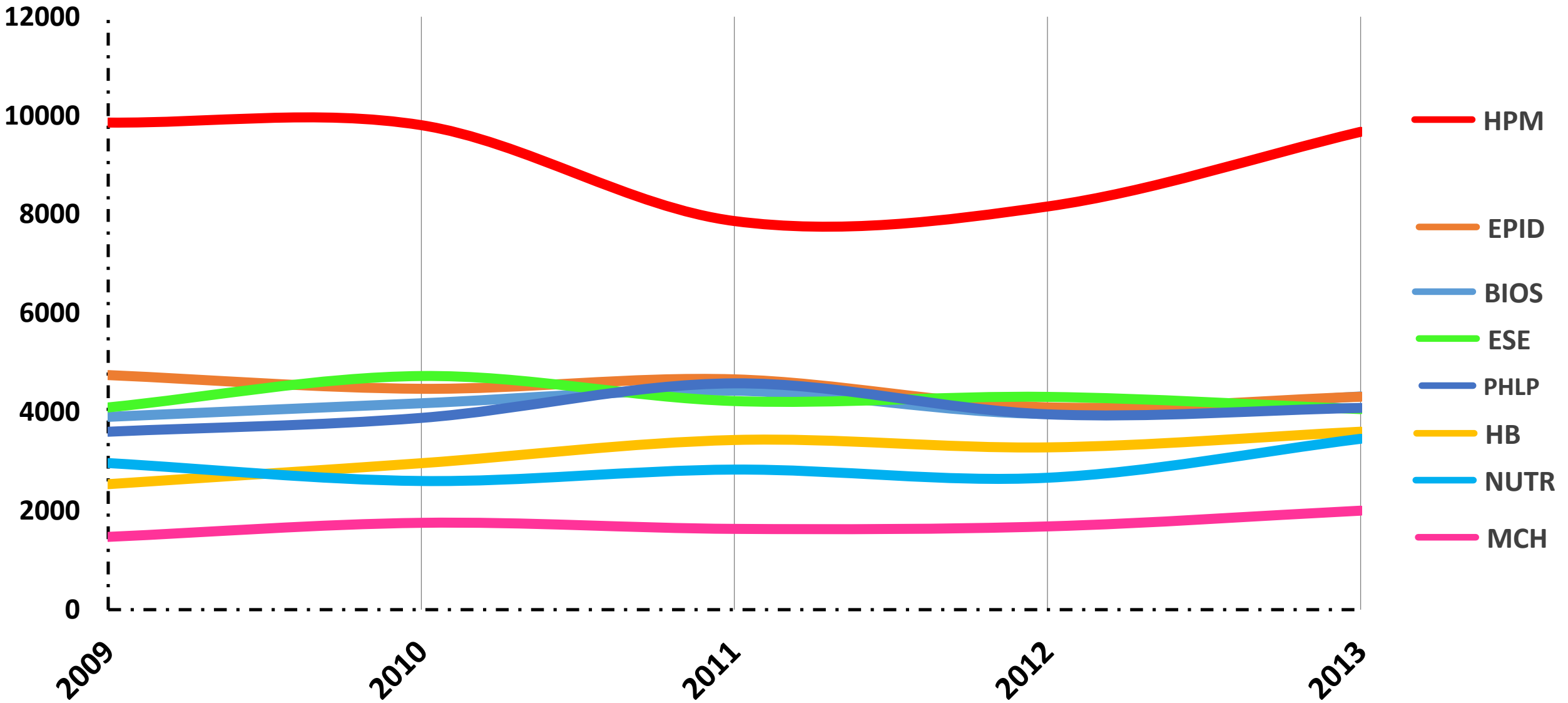
- Professional degrees tuition surcharge (DrPH, MPH, MSEE, MSPH & MHA)
- Often referred to as “School- Based Tuition” or “SBT”.



Enrollment Trends by Department

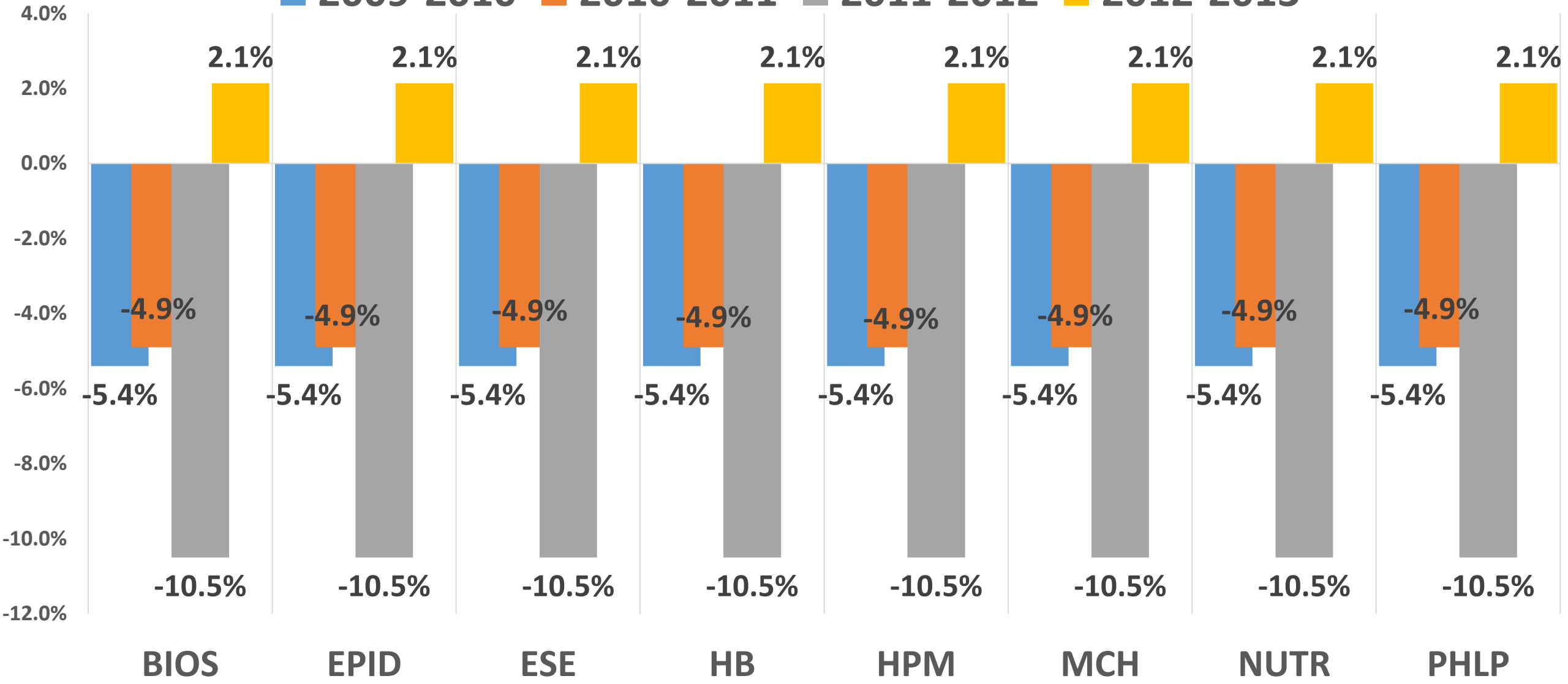


TSCH Trends by Department

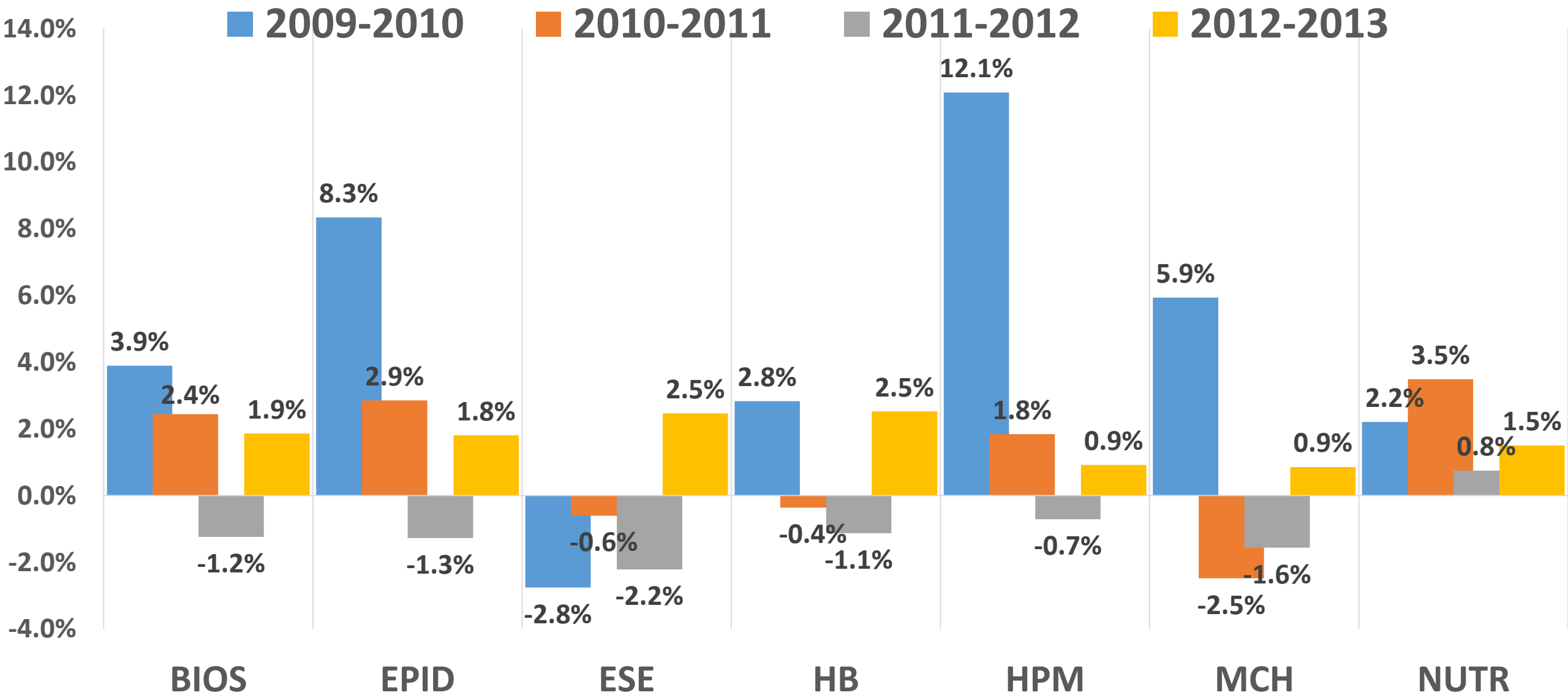


Budget Cut Impacts

■ 2009-2010 ■ 2010-2011 ■ 2011-2012 ■ 2012-2013



Allocation Model Impacts: Without UNC Budget Changes



Summary

SPH State Resources

❖ Permanent State Appropriation

- Originates from legislature to UNC System
- Board of Governors Allocates to UNC-CH
- Provost's Office Allocates to SPH
- SPH Allocates to departments with Allocation Model

❖ School Based Tuition

- Originates from tuition receipts from SPH professional degree students
- 33% returned to students as financial aid
- Allocate to departments for faculty support using receipts as a guide

❖ Temporary State Support

- Funding for fringe benefits of salaries charged to state resources
- Small amounts can be allocated from Provost Office to SPH for short-term funding

Questions?

THANK YOU!