

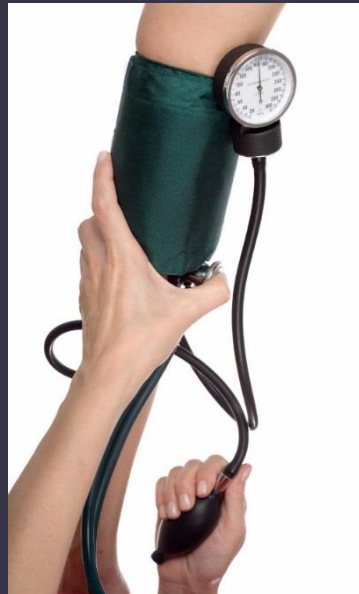
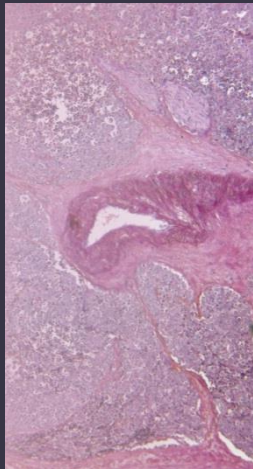


THE NORTH CAROLINA TRANSLATIONAL AND CLINICAL SCIENCES (NC TRACS) INSTITUTE

SPH Faculty/Staff Meeting
May 1, 2014

Goal: Accelerate Clinical and Translational Research from discovery to dissemination

⦿ Use discoveries from laboratory and preclinical research to conduct trials and studies in humans



⦿ Enhance adoption of best practices in the community by transforming discoveries from laboratory, clinical and community settings into changes in medical and public health practice and policy

⦿ One of **60** Clinical and Translational Science Awards (CTSA) supported through NIH

⦿ UNC-CH, RTI & NC A&T Partnership

Multiple Opportunities for Faculty, Staff and Students

Multiple Resources

available to help with research funding, conduct of research, publication, etc.

NC TraCS Pilot Program offers a variety of Pilot Grant opportunities ranging from \$2K to \$100K

Education, Training and Career Development activities available for PI/Co-Is, mentors, and implementers/ collaborators

Website

<https://tracs.unc.edu>



PANELISTS

Alice Ammerman, Nutrition Professor, HPDP Director

Michael Kosorok, Biostatistics Chair and Professor

Beth Mayer-Davis, Nutrition Chair and Professor

Morris Weinberger, Health Policy & Management Professor

Alan Brookhart, Epidemiology Associate Professor