



SPH2020

CREATING A GLOBAL VISION FOR THE GILLINGS SCHOOL OF GLOBAL PUBLIC HEALTH

**SPH2020 Global Task Force
Faculty and Staff Meeting Update**

October 3, 2012



SPH2020 categories





SPH2020 SPH 2020 Global Focus Areas

4.1 Well-funded and coordinated international graduate experiences [61]

4.2 Leadership in global solutions [59]

4.2.2 World leaders in water, family planning, sustainable communities and addressing Overpopulation

4.2.3 We are recognized for our expertise and problem solving in both developing and developed countries.

4.2.4 Foci on social justice issues, and enhancing skills of global competency

4.3 Elite global partnerships [41]

4.3.1 We initiate and maintain strong partnerships with elite institutions around the world that promote seamless exchanges of students, faculty and ideas.

4.4 Strong global MPH [16]

4.5 Increased global content in all courses [15]

4.6 Global footprint reflected in SPH composition and all activities [9]

4.7 Interdisciplinary undergraduate program [9]



Questions Considered

- How do key opinion leaders rate us today in terms of our global impact and reach?
- What is the appropriate global vision for our school?
- What are the critical steps to achieve the vision?
- What are the most important barriers and facilitators to achieving our global vision?
- What principles, values and goals are important to pursuing the vision?
- What are the metrics necessary for us to be considered a top global SPH?
- What resource types, range estimates and potential sources are essential to achieve the global vision?

Task Force Members

EXTERNAL MEMBERS

NAME	ORGANIZATION	SUB-GROUP
Nicole Bates	Bill and Melinda Gates Foundation	Product
Katie Bowler	UNC Global	Brand
Ward Cates	FHI360	Brand
Rebecca Kohler	Intrahealth International	Product
Paula Brown Stafford	Quintiles International	Brand
Lisa Strader	RTI International	People

INTERNAL MEMBERS

NAME	AFFILIATION	SUB-GROUP
Rohit Ramaswamy (Chair)	Clinical Associate Professor	People
Peggy Bentley	Associate Dean, Global Health	People (chair)
Don Holzworth	Executive-in-Residence	Brand (chair)
Sue Havala Hobbs	Clinical Associate Professor	Product (chair)
Lauren Snyder	MPH Candidate	Product
Bobbi Wallace	Director, Corporate and Global Partnerships	People

● Support Team

Steve Sloate
Adjunct Associate Professor
HPM

Jay Levy
Adjunct Lecturer
HPM

Caitlin Kleiboer
Research Assistant
Dean's Office



Task Force Aspirations for Global School

CRITICAL ATTRIBUTES	DEFINITIONS
STUDENT EXPERIENCE	Our international student-experiences should be, by any measure, the finest in the world.
GLOBAL LEADERSHIP AND GOVERNANCE	Our leaders should have demonstrated experiences operating in both the developed and in the developing world.
LEADERS IN GLOBAL PROBLEM SOLVING	We should be recognized world leaders in research and problem solving for all critical public health and global health topics.
ELITE PARTNERSHIPS AND EXCHANGES	We should have elite global partnerships that promote seamless exchanges of students, faculty and ideas.
DIVERSITY	We should recognize that diversity and inclusion are essential components of academic excellence and ensure that we expand diversity among our faculty, staff and students.
GLOBAL PRESENCE	We should be organized and operate as a global enterprise.
ENTREPRENEURSHIP AND INNOVATION	We should embrace entrepreneurship and innovation as key operating tenets.
RECOGNIZED UNIVERSITY OF CHOICE	People should enroll or work here because they know they will get to work with the world's finest.

The Concept – a GATEWAY



- A **brand** to communicate global activities and expertise.
- An **online portal** providing a single access point to our global capabilities.
- An **organization** to:
 - promote departments' global and local expertise
 - Identify and pursue new funding sources
 - facilitate interdisciplinary collaboration
 - offer workshops and seminars
 - connect our students and faculty to our global partners

Partnership Center



Responsible for creating, growing and sustaining elite global partnerships for the school based on strategic criteria developed in conjunction with departments and school leadership.

Research in Action Lab



Responsible for creating and promoting linkages between our school's research and the practice community through workshops, seminars, conferences and action learning projects to create new methods to address complex global health and development issues.

Learning Center

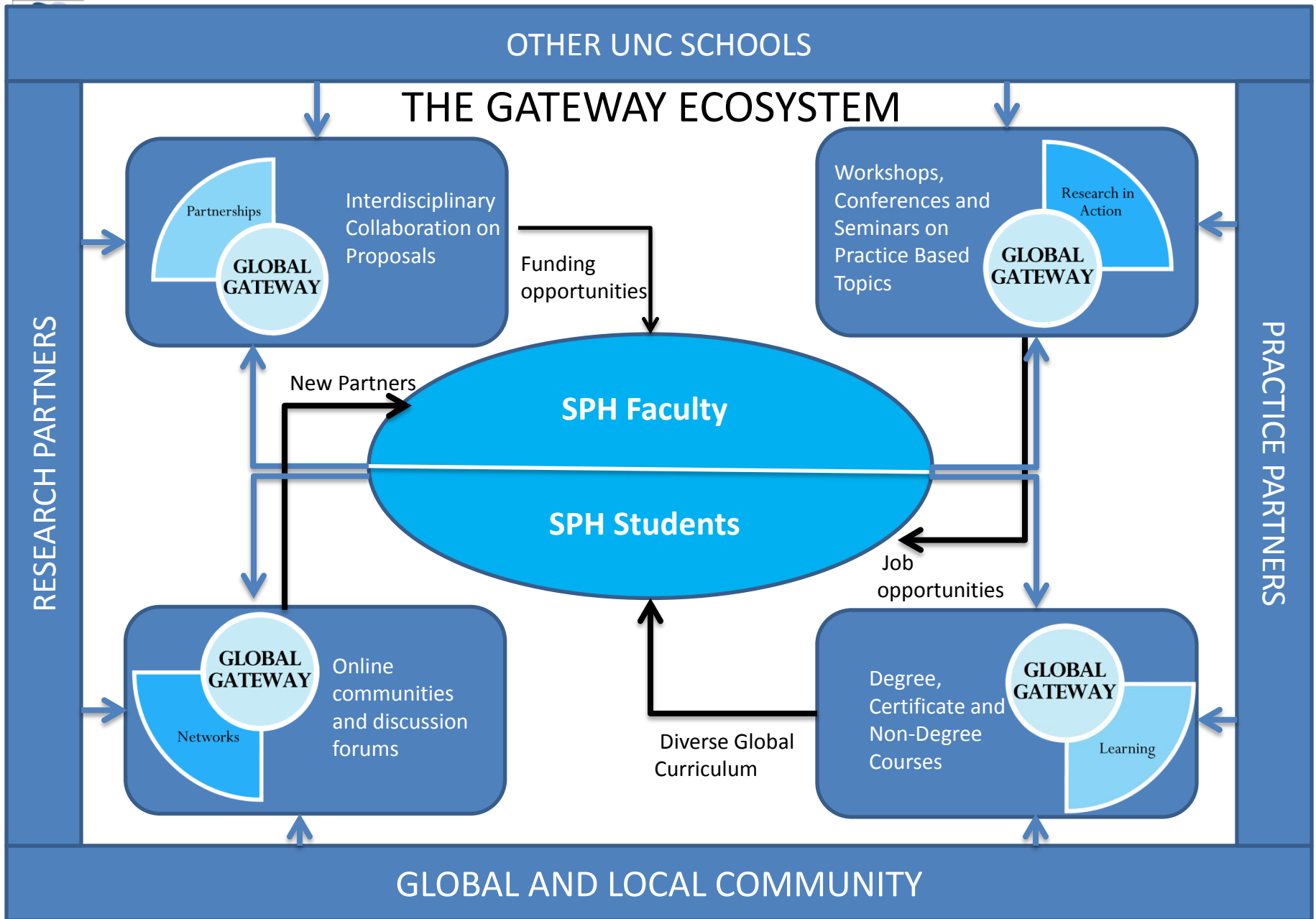


Will fund and support the creation of new academic and practice-based distance learning courses. Easily navigable access point for all learning programs with global content.

Network Center



Create, maintain and facilitate online networks to connect the school to partners and to local and global *ambassadors* interested in promoting the school and the university to the global community



Next Steps

- Discussion of report with departments
- Finalization of activities
- Implementation planning
- Launch in early 2014.